

Cunningham's Device



For Registering Cattle

S F

101



C96

LIBRARY OF CONGRESS.

Chap. *SF101* Copyright No.

Shelf. *C96*

UNITED STATES OF AMERICA.



Thomas Cunningham

CUNNINGHAM'S DEVICE

— FOR —

STOCKMEN and FARMERS.

A NEW, SIMPLE AND CONCISE METHOD

— OF —

REGISTERING CATTLE,

So that in case of their being Lost, Strayed or
Stolen they can be definitely Recognized
and Claimed.

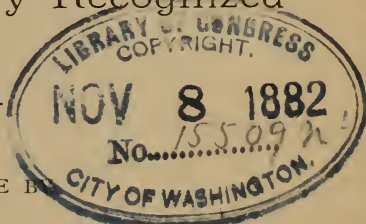
14
9350

PUBLISHED AND FOR SALE BY

H. BALDWIN, BOOKSELLER AND STATIONER,

204 MAIN STREET,

STOCKTON, CAL.



Entered according to Act of Congress, in the year 1882, by
H. Baldwin, Stockton, in the Office of the Librarian
of Congress at Washington.

SF101
C96

REMARKS ON THE METHOD.

There are probably few stock owners to whom, at some time or other, the necessity has not presented itself of having a systematical record of the animals they own.

Whilst a perfectly easy matter to recognize the animals with which one is familiar, as numbers increase the difficulties become greater, and stockmen are well aware how troublesome a matter it is when cattle are lost to give a sufficiently accurate description of them to allow of their identification by a stranger. A man remembers that that red cow had a white patch on her, but he is not by any means certain after losing sight of her for a few weeks exactly where it was. He would recognize the cow fast enough if he caught sight of her himself, but to give from memory any very graphic account of her markings is another matter altogether.

The idea of the present stock book was presented to the publisher by Mr. Thos. Cunningham, the well-known Sheriff of San Joaquin County, and the mere fact that the information he is constantly requiring when applied to for assistance in the recovery of lost stock suggests such a record as is here provided, is good proof that in case of loss a carefully preserved description, which is by this means made an easy matter, will be of great value.

The first illustration shows the application of the proposed plan, and describes a red cow, 4 years old, with square crop off right ear, two under bits in left ear, branded 25 on right hip, white spot on left side, and dulop.

CUNNINGHAM'S DEVICE.

This device consists of two outline cuts of the cow or other animal to be described. The two cuts showing both sides of the animal. By the use of these cuts a fac-simile of all the marks, spots and brand, and their exact location on the animal can be shown. These cuts are intended to be used by the owners of stock for the purpose of making an exact description of all the stock they own, so that in the event of it being lost, strayed or stolen, the owner will have such an accurate description that the animal can be identified by any one who is furnished with a copy.

The necessity for some such device has been suggested to Mr Cunningham by the difficulty he (as an officer) has experienced in getting (even from the owners) a good description of the stock lost or stolen, and much time has been lost and expense incurred for that reason.

This device if adopted by stock owners will be of great advantage to them, and also to Sheriffs and other Peace Officers, who are often called upon to look for stolen stock.

ILLUSTRATION



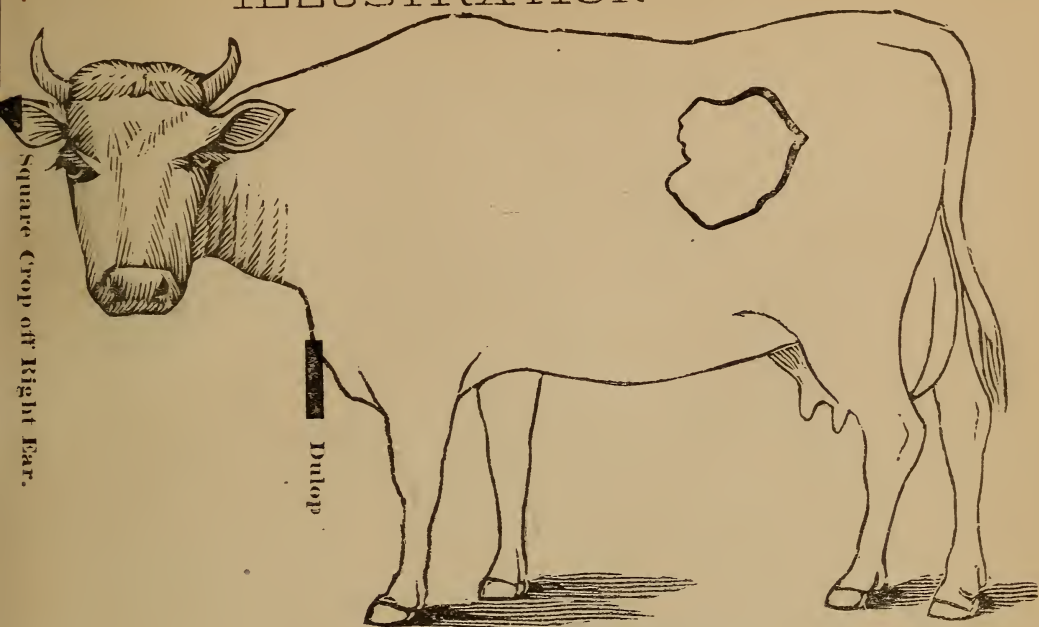
DESCRIPTION

Color..... Red.....

Marks White spot on left side.....

Weight

ILLUSTRATION



Square Crop off Right Ear.

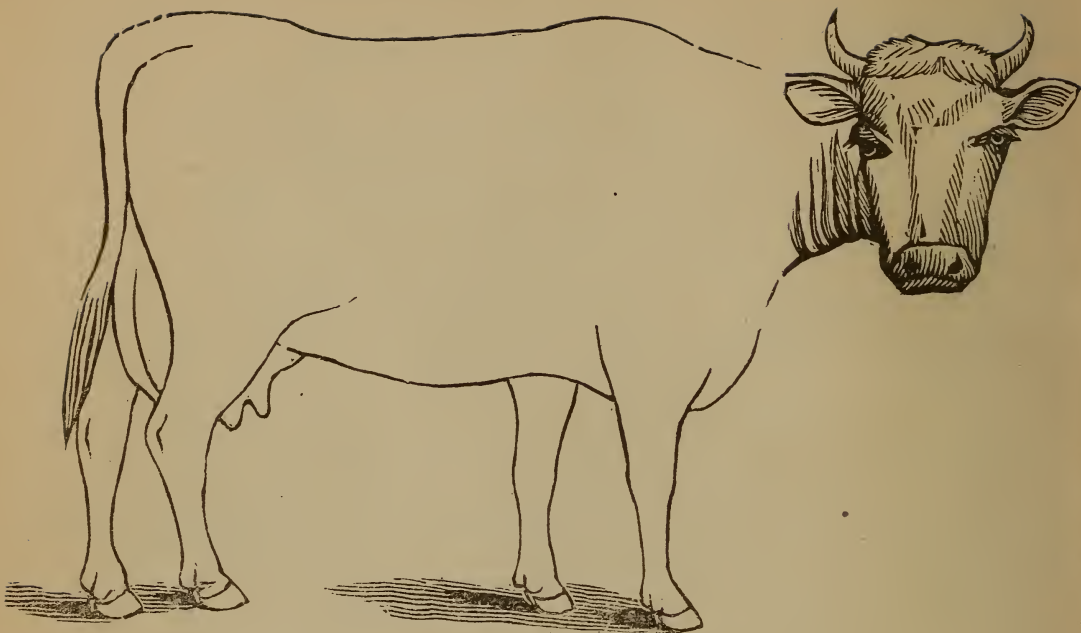
Dulop

DESCRIPTION

Age 4 years.....

Defects.....

Brands..... Two under bits in left ear, square crop off right ear, 25 on right hip, and dulop.

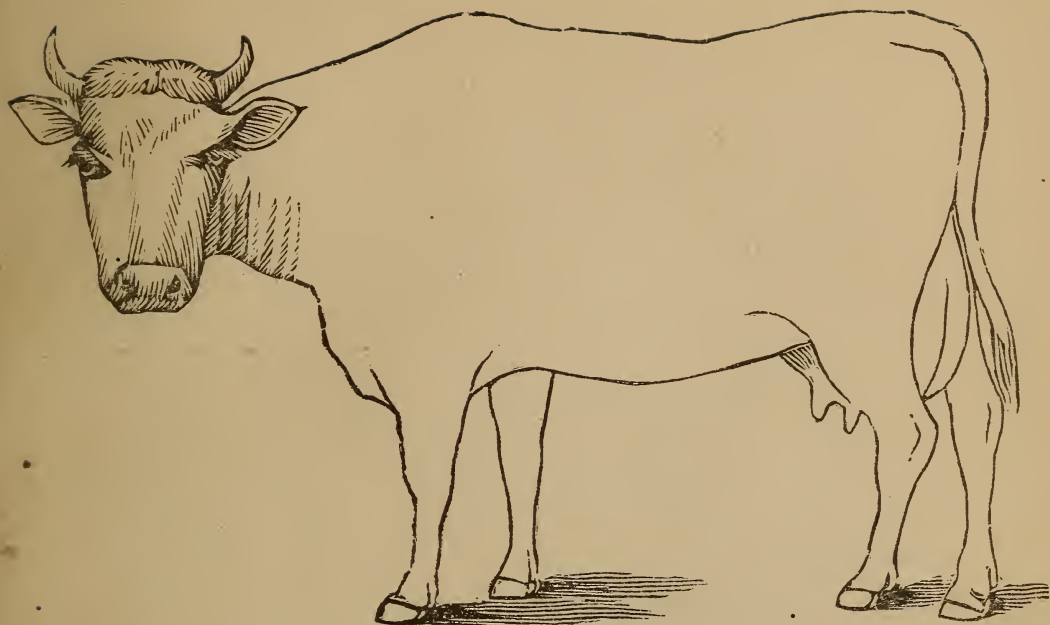


DESCRIPTION

Color.....

Marks.....

Weight.....

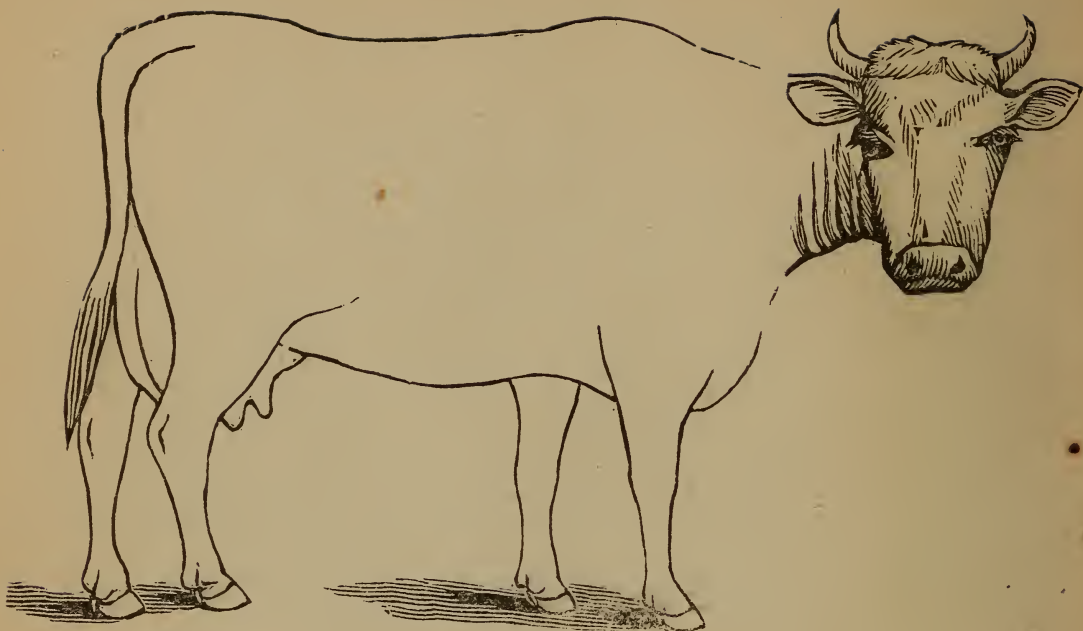


DESCRIPTION

Age.....

Defects.....

Brands.....

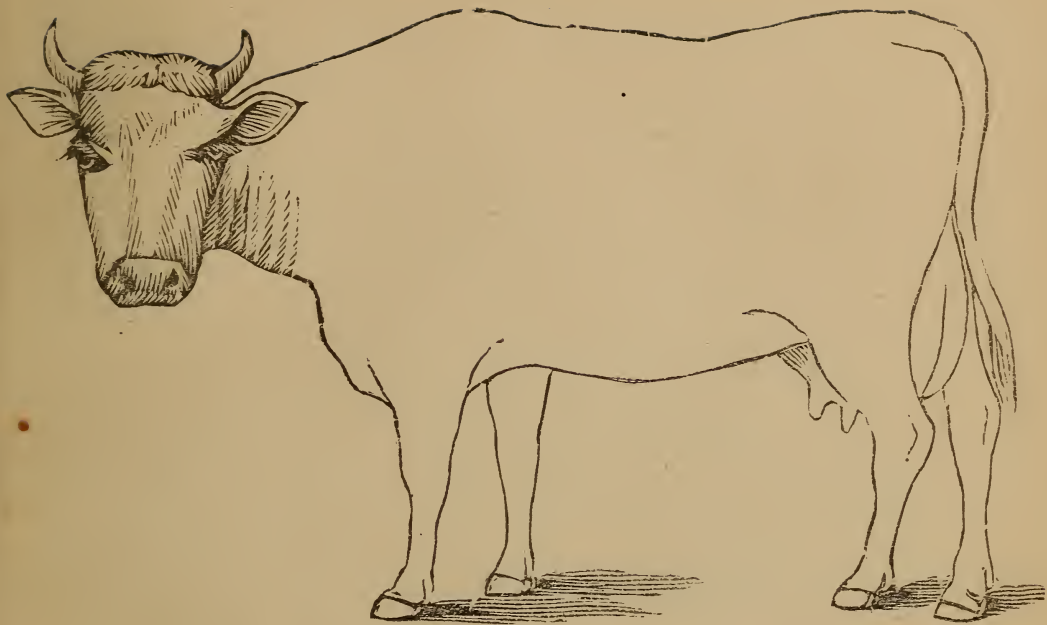


DESCRIPTION

Color.....

Marks.....

Weight.....

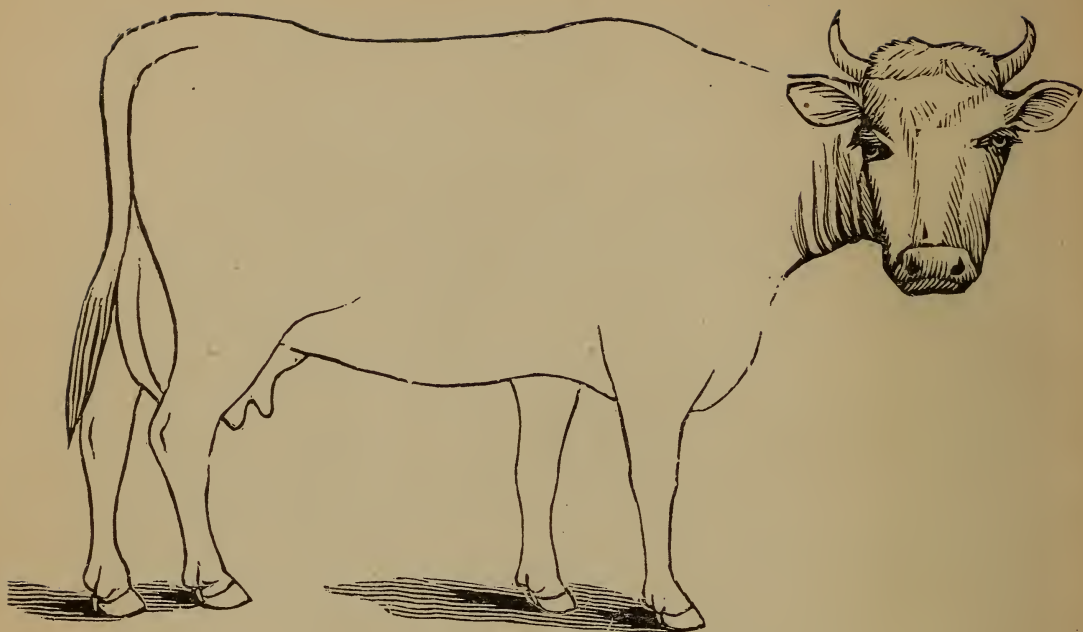


DESCRIPTION

Age

Defects

Brands

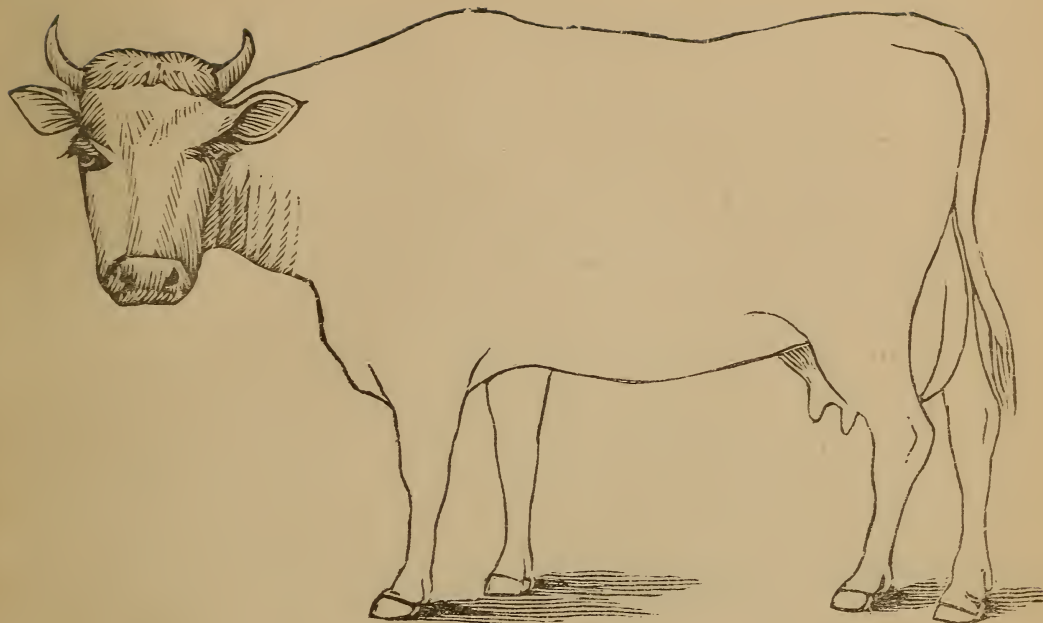


DESCRIPTION

Color.....

Marks.....

Weight.....

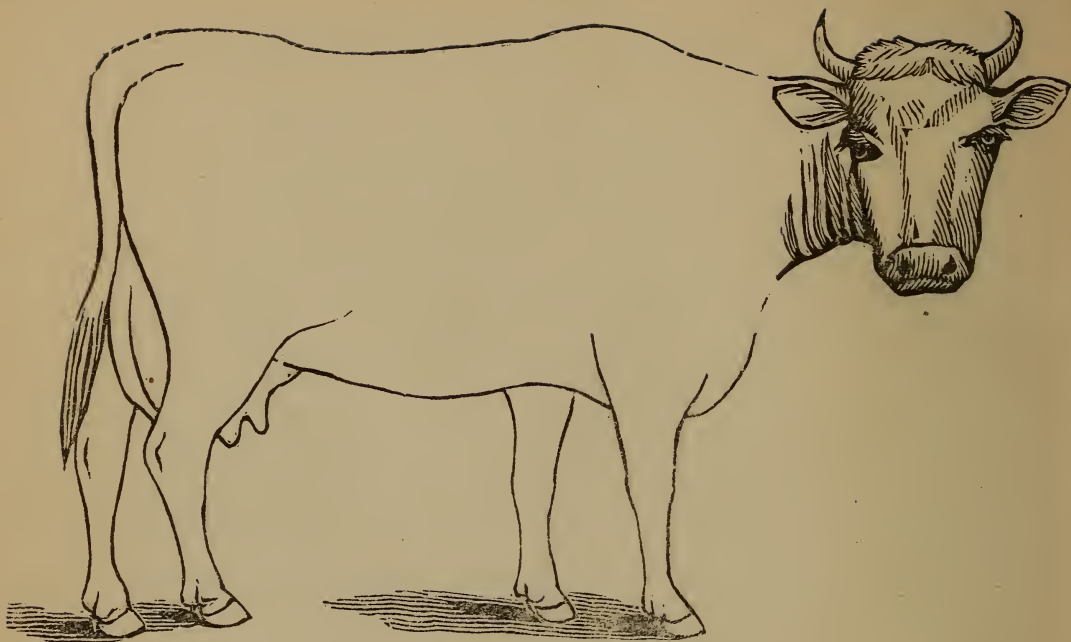


DESCRIPTION

Age

Defects

Brands

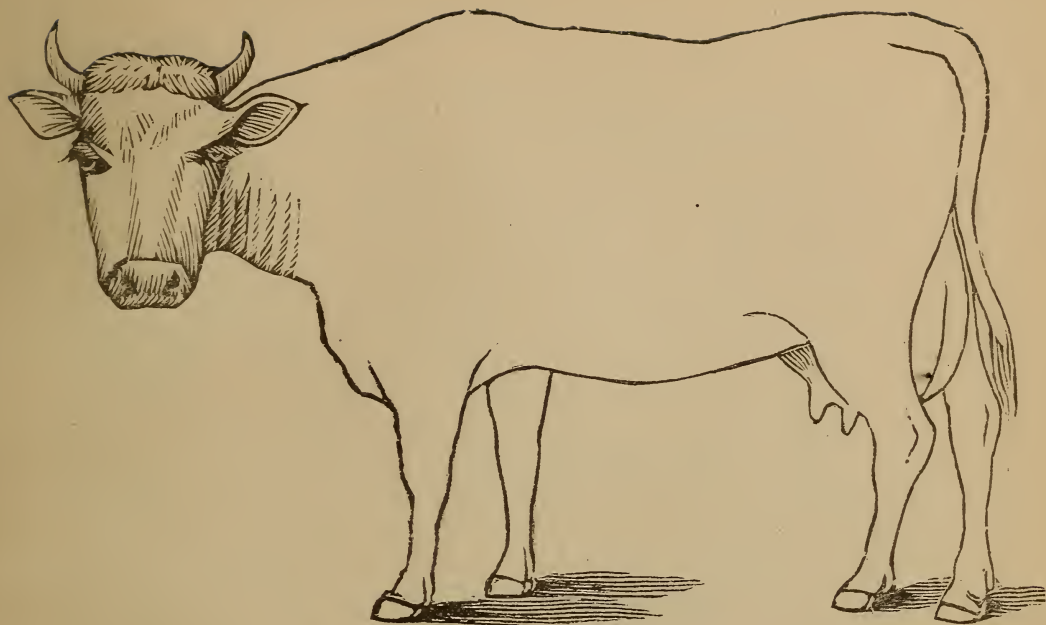


DESCRIPTION

Color.....

Marks.....

Weight.....

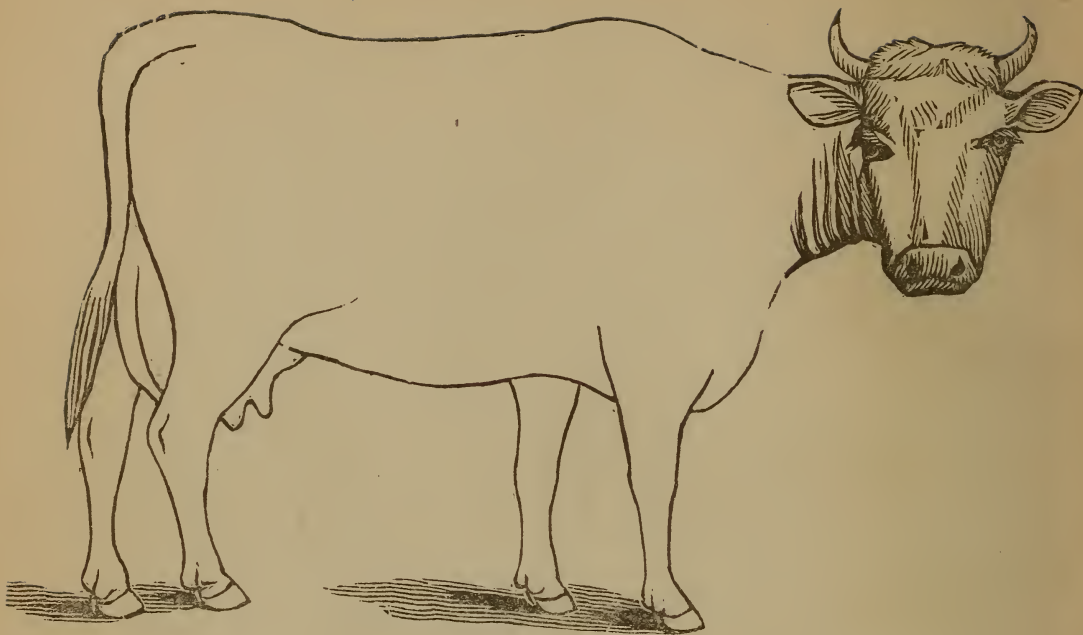


DESCRIPTION

Age.....

Defects.....

Brands.....

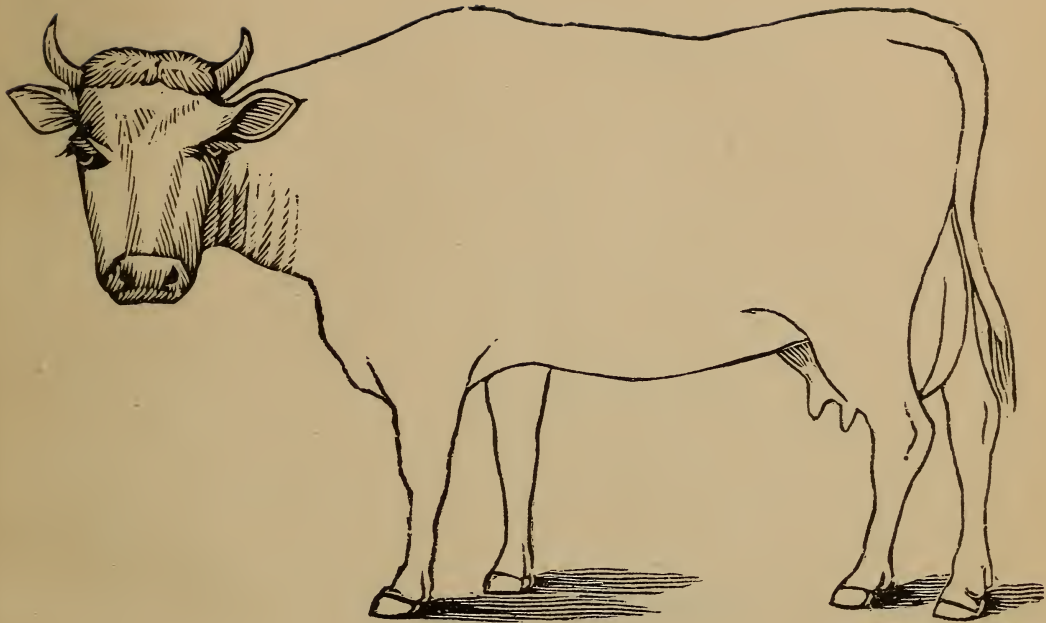


DESCRIPTION

Color.....

Marks.....

Weight.....

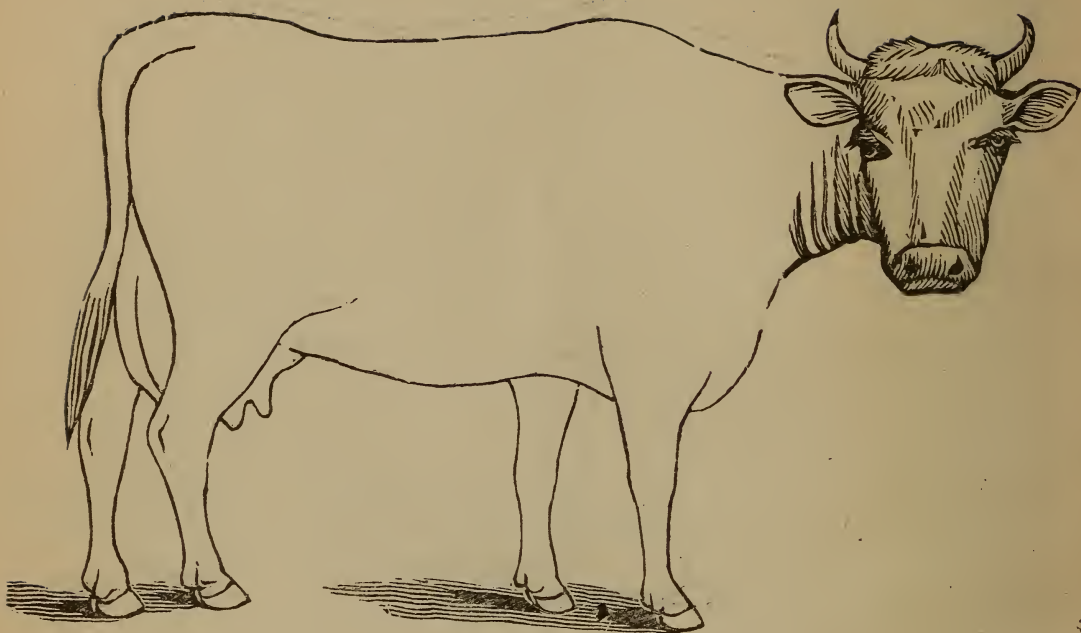


DESCRIPTION

Age.....

Defects

Brands.....

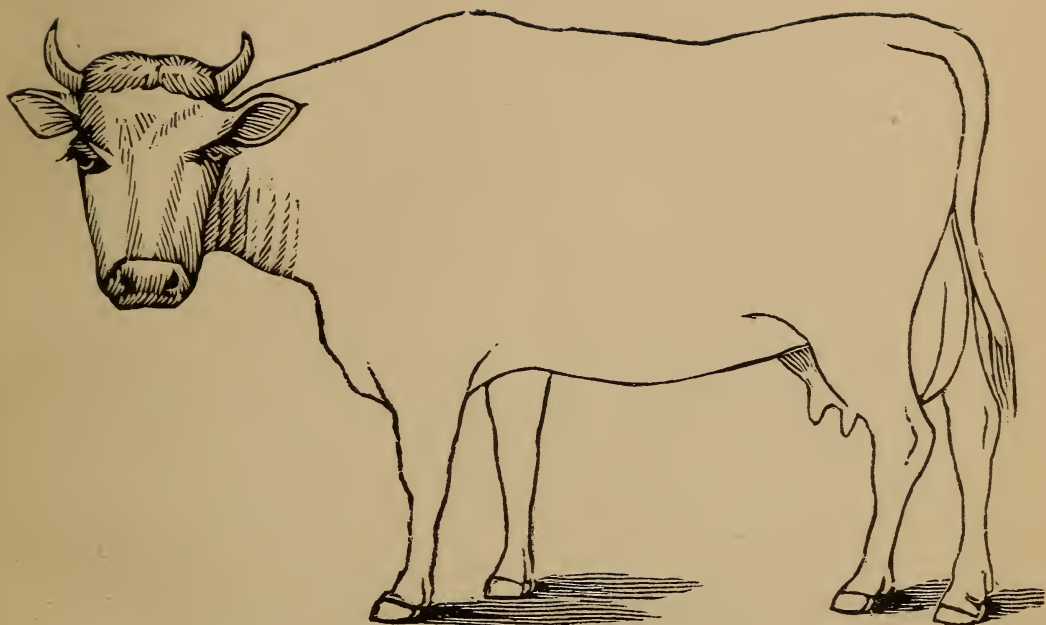


DESCRIPTION

Color.....

Marks.....

Weight.....

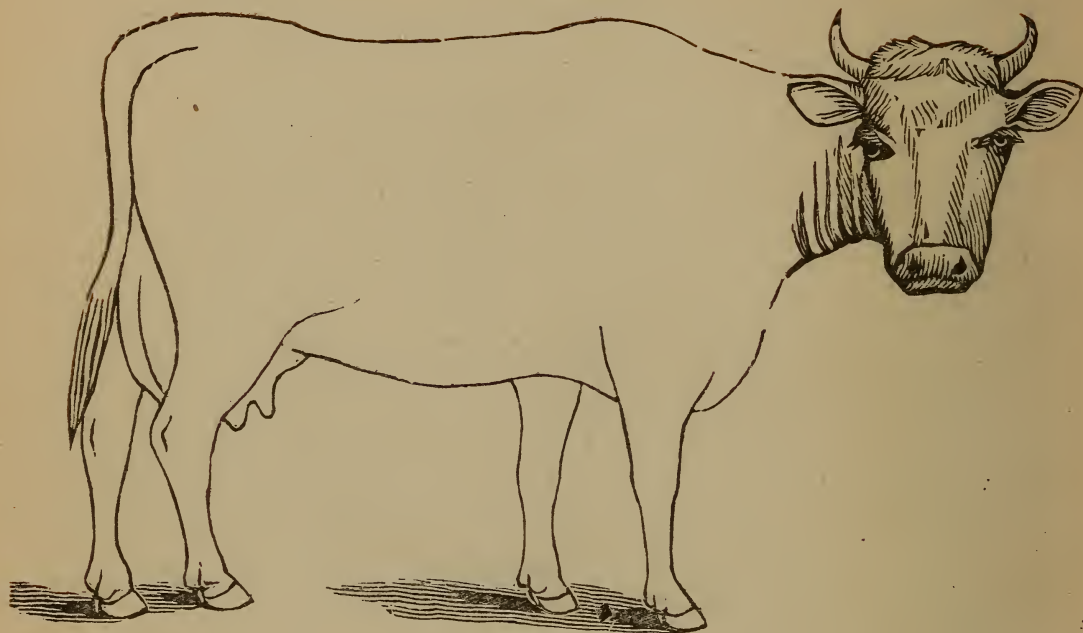


DESCRIPTION

Age.....

Defects

Brands.....

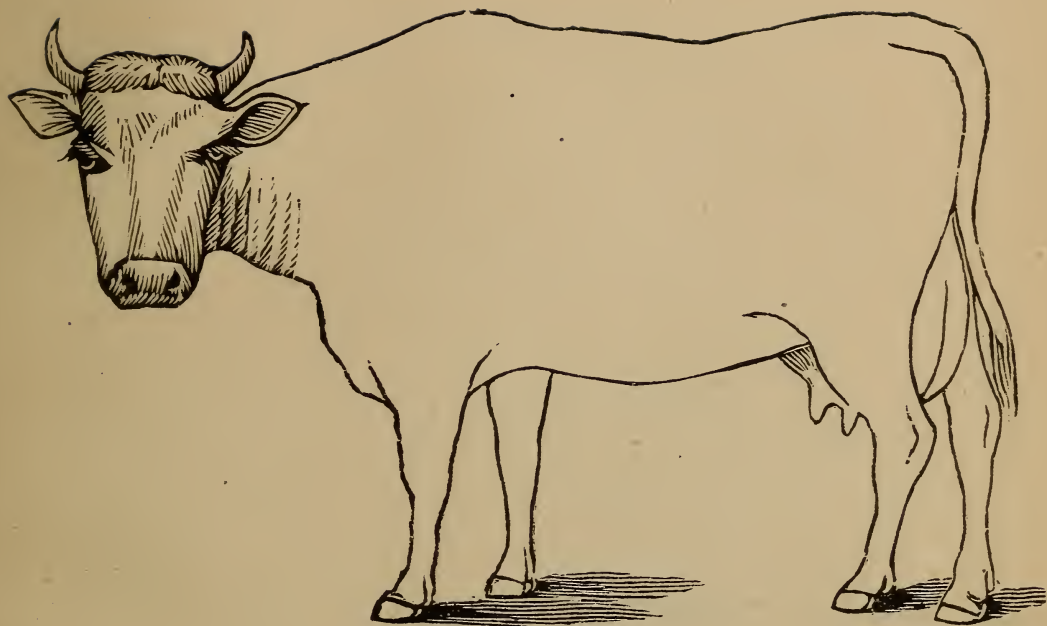


DESCRIPTION

Color.....

Marks.....

Weight.....

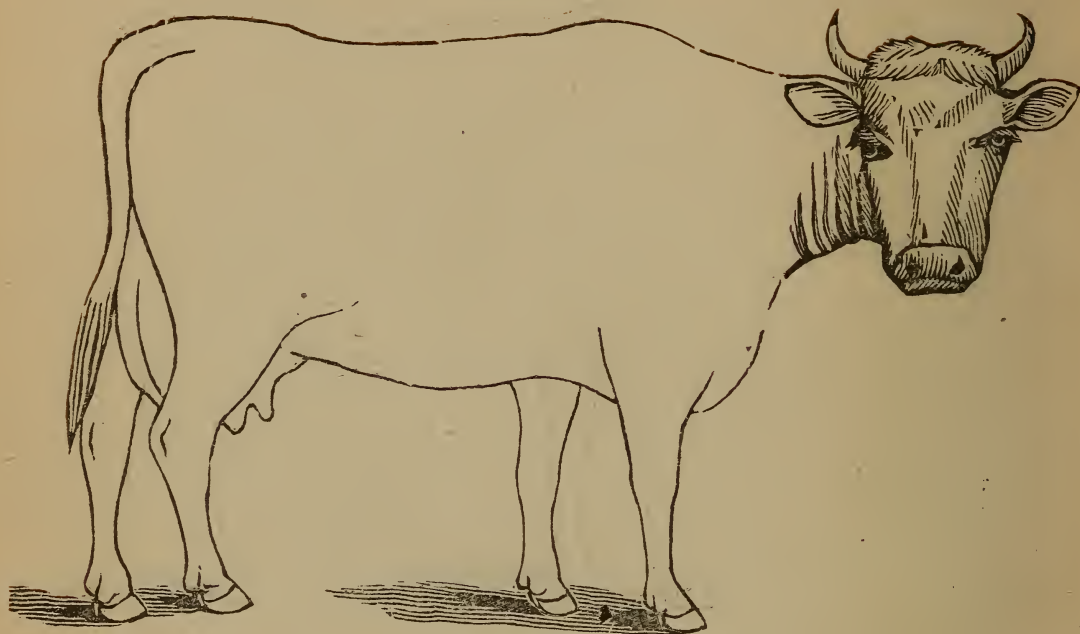


DESCRIPTION

Age.....

Defects

Brands.....

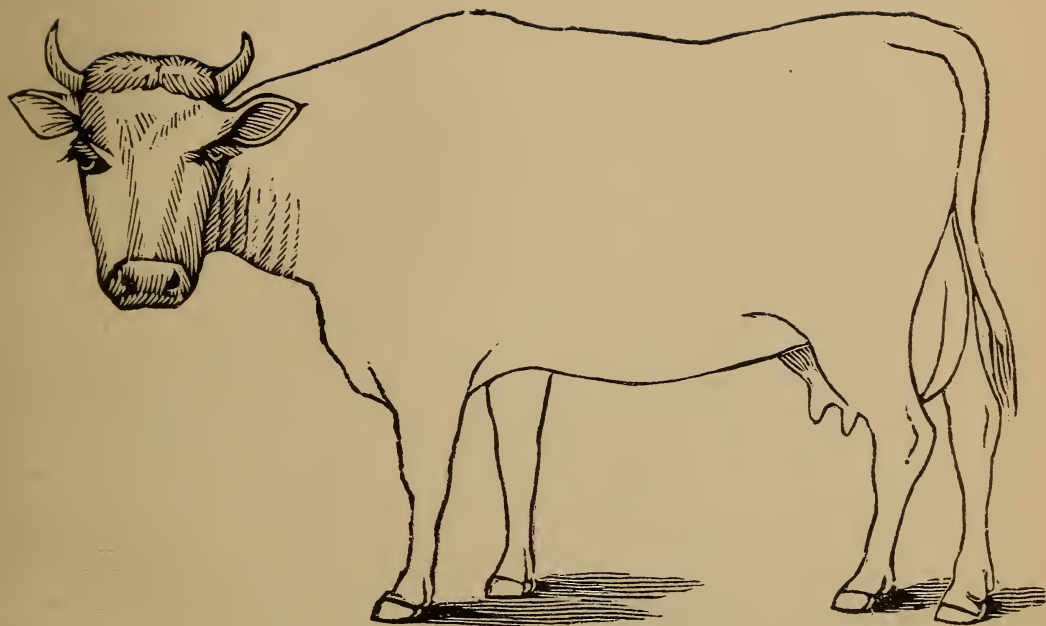


DESCRIPTION

Color.....

Marks.....

Weight.....

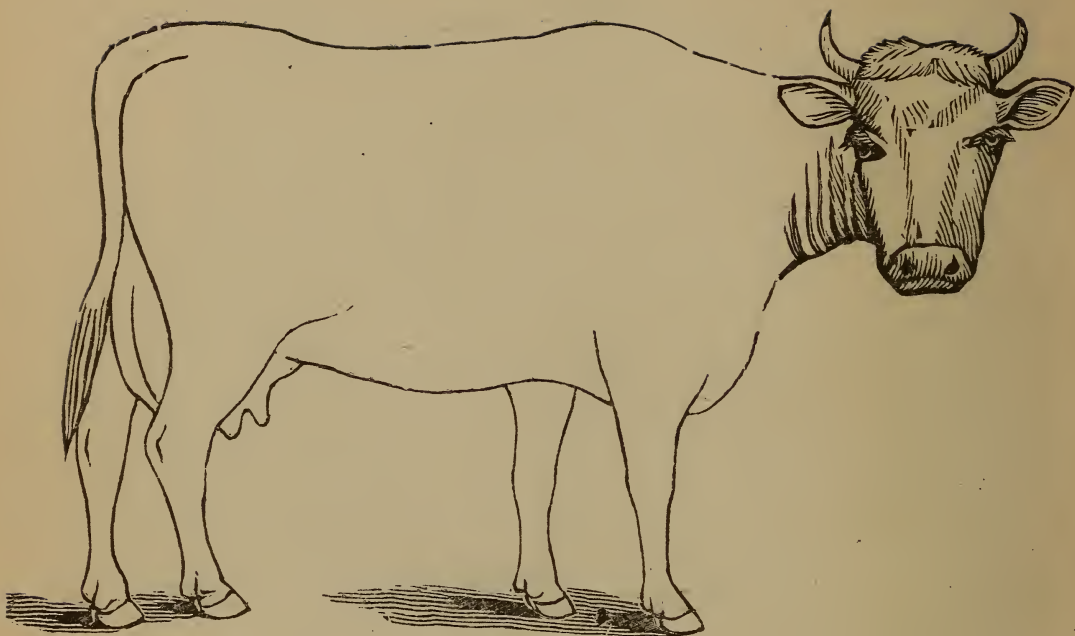


DESCRIPTION

Age.....

Defects

Brands.....

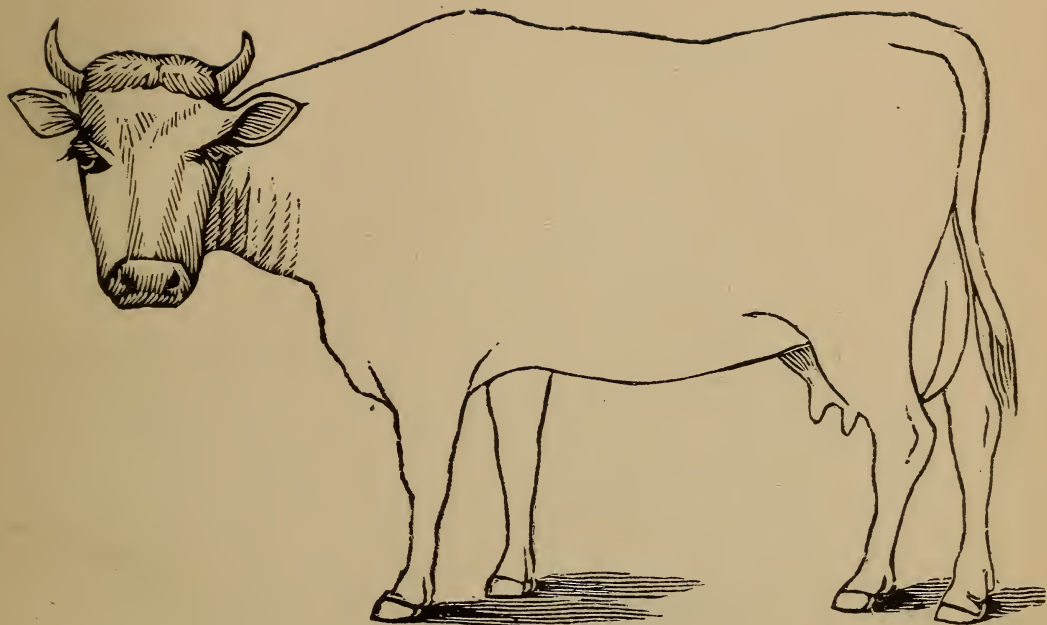


DESCRIPTION

Color.....

Marks.....

Weight.....

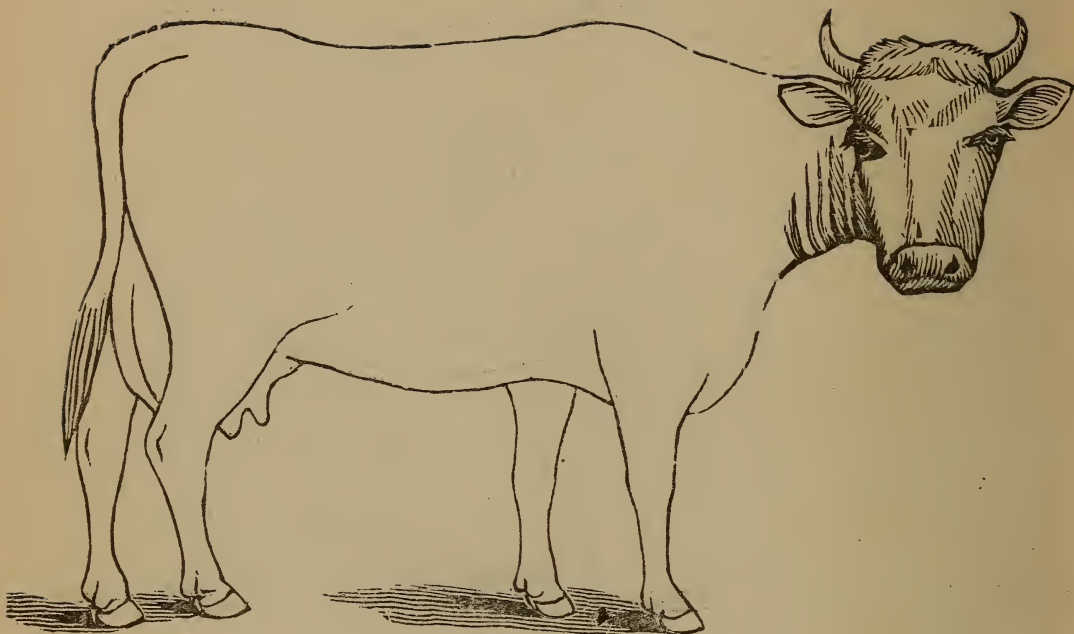


DESCRIPTION

Age.....

Defects

Brands.....

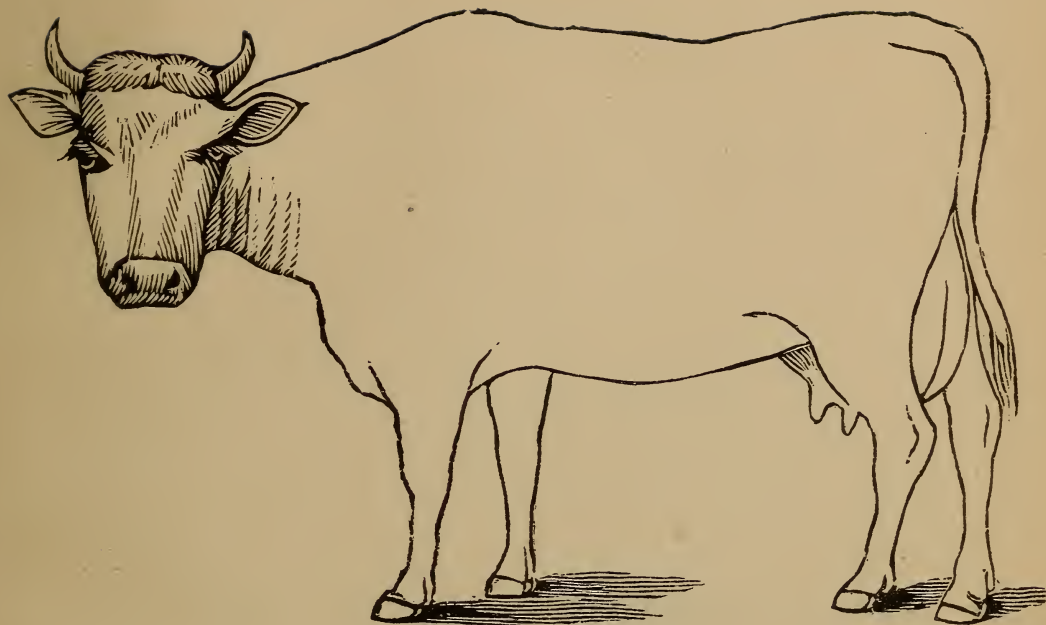


DESCRIPTION

Color.....

Marks.....

Weight.....

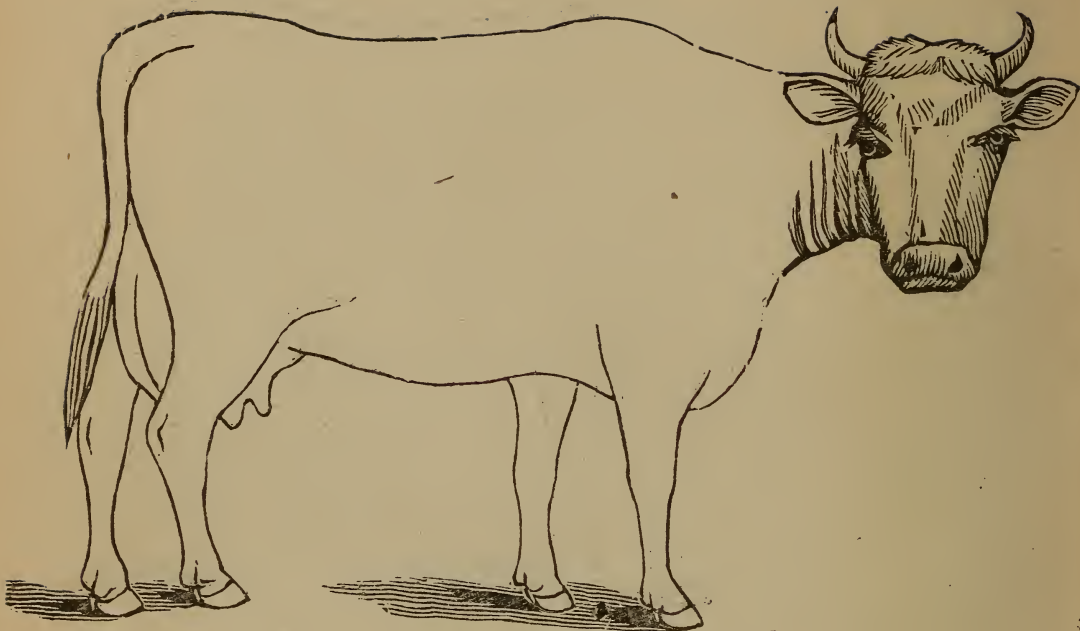


DESCRIPTION

Age.....

Defects

Brands.....

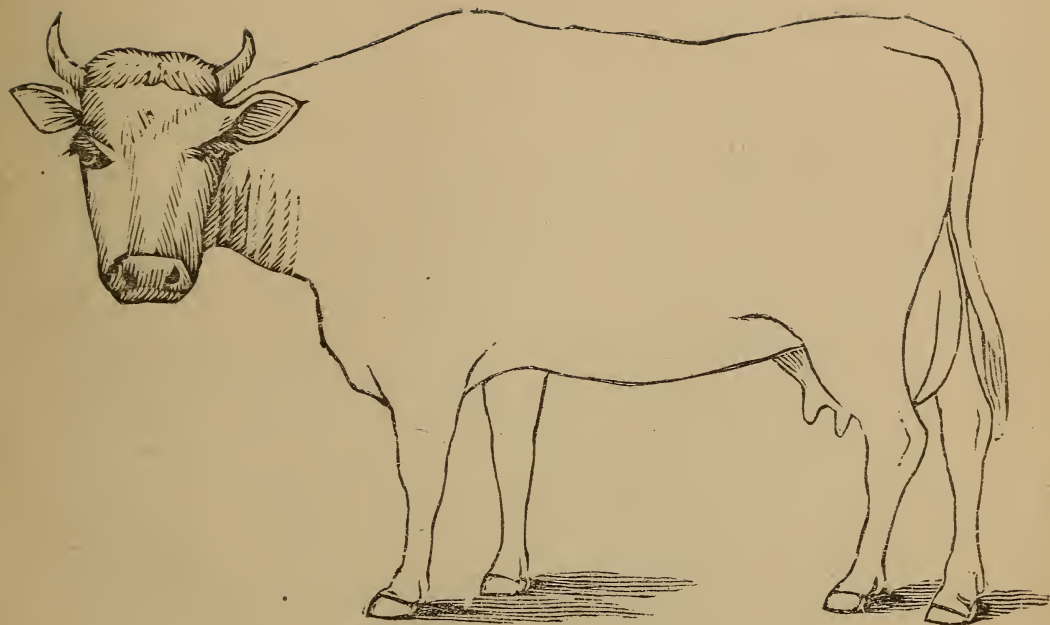


DESCRIPTION

Color.....

Marks.....

Weight.....

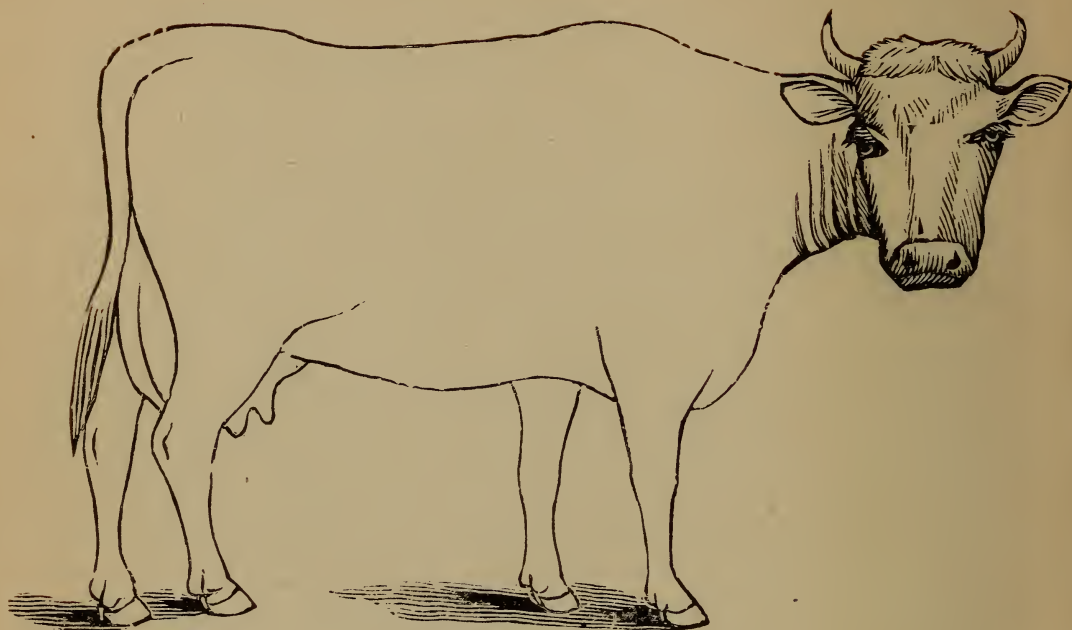


DESCRIPTION

Age

Defects

Brands

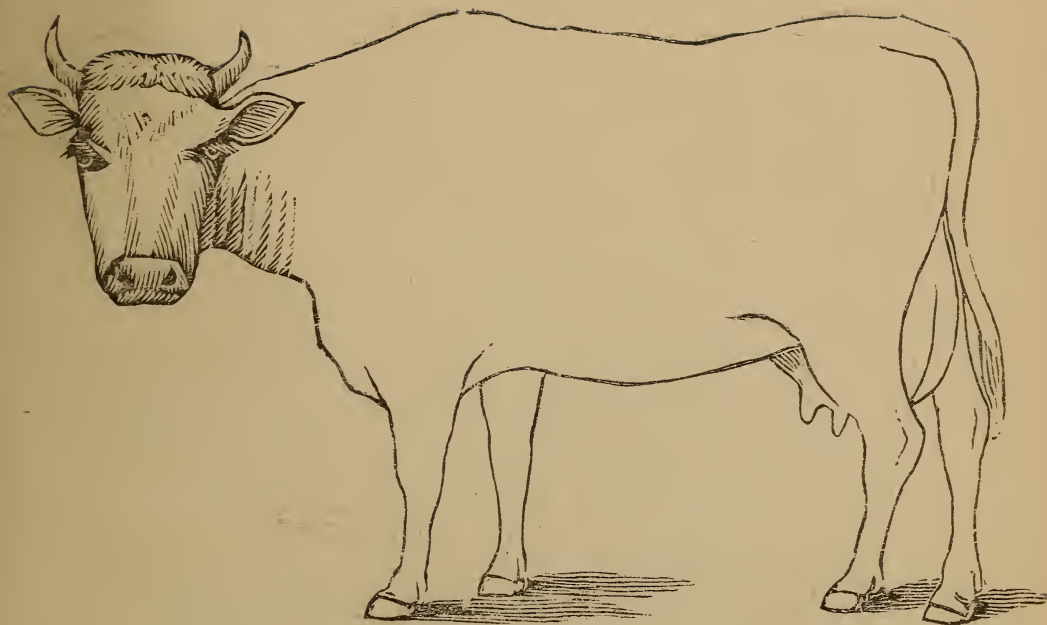


DESCRIPTION

Color

Marks

Weight

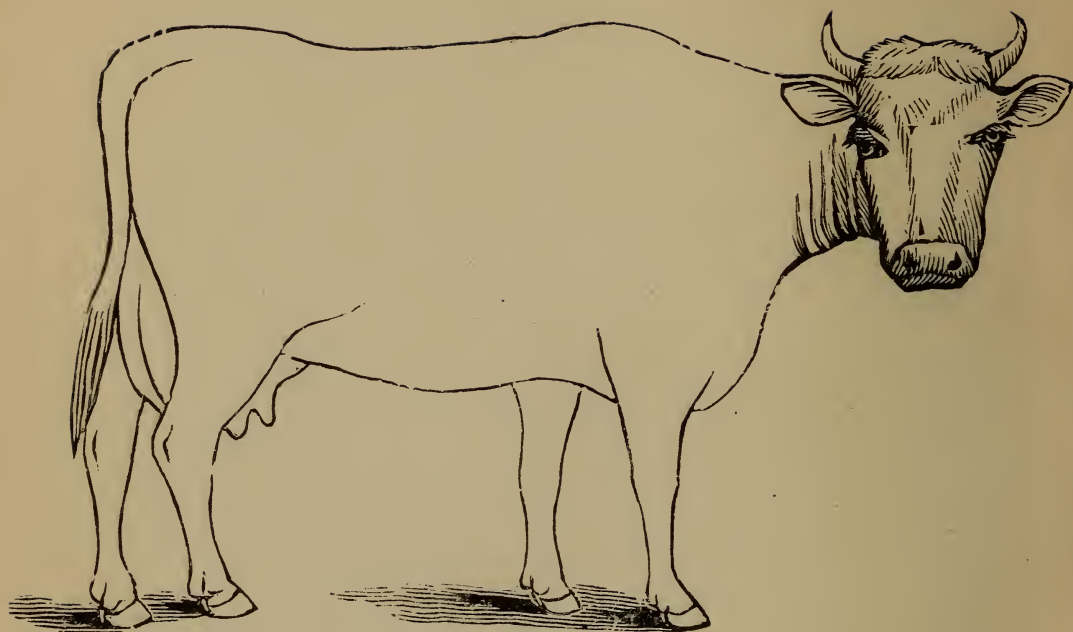


DESCRIPTION

Age

Defects

Brands

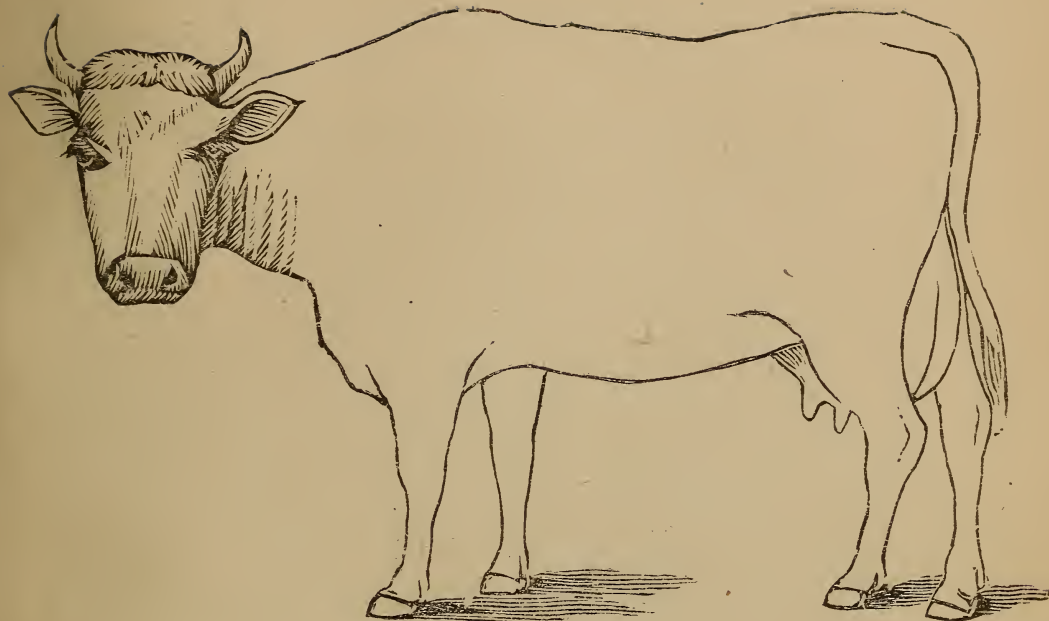


DESCRIPTION

Color

Marks

Weight

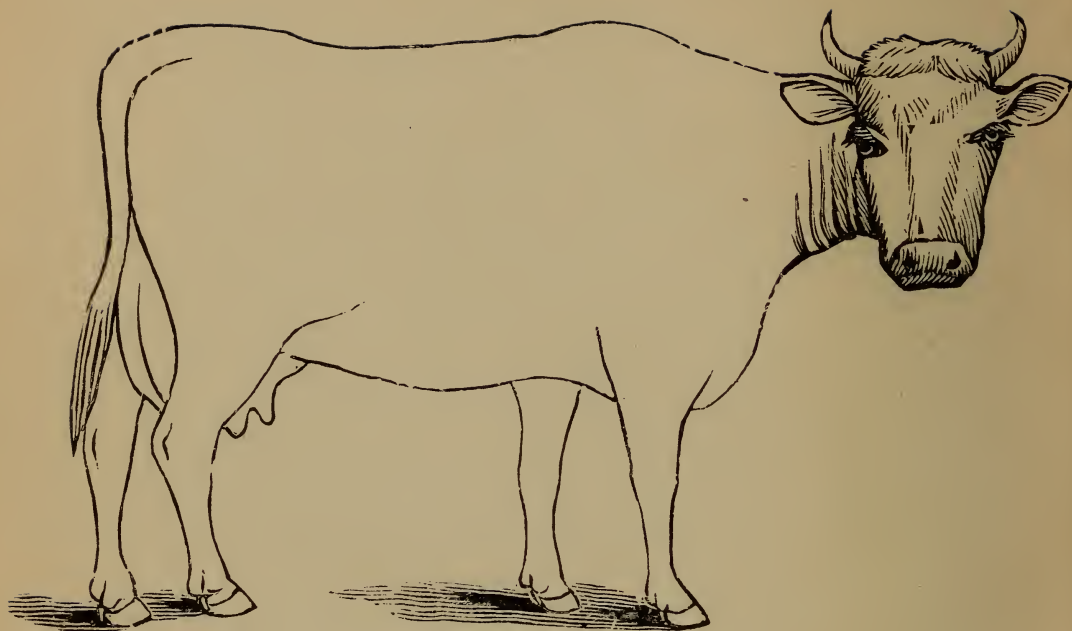


DESCRIPTION

Age

Defects

Brands

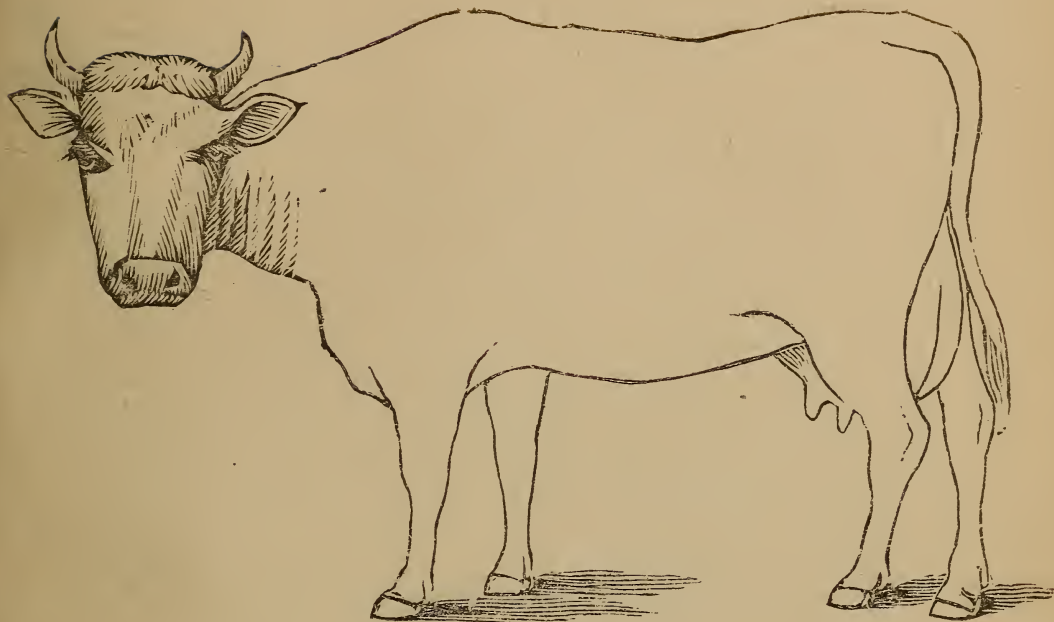


DESCRIPTION

Color

Marks

Weight

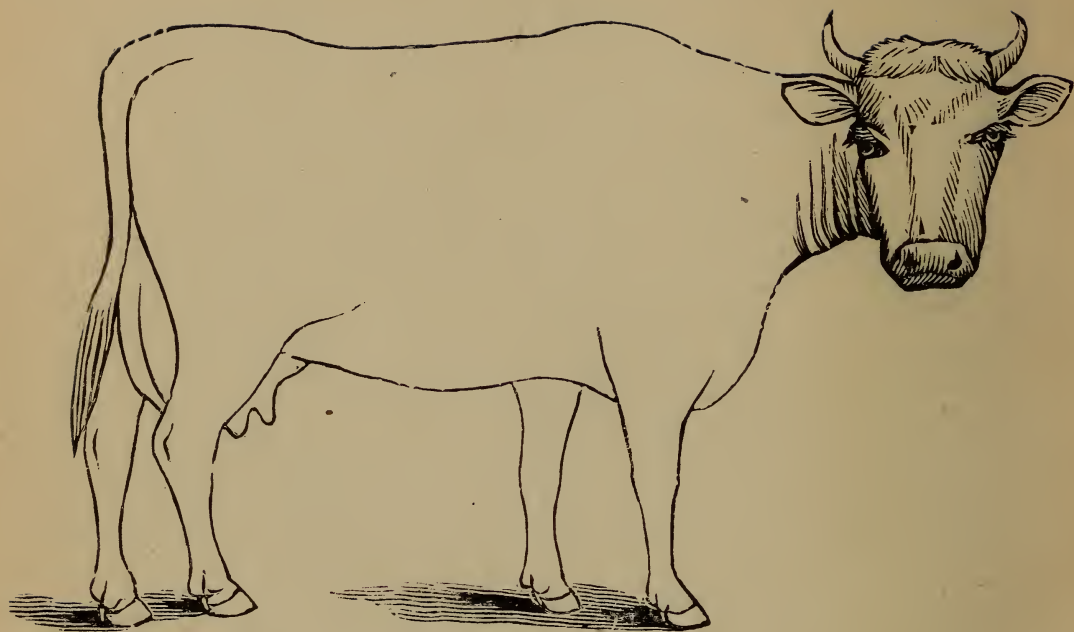


DESCRIPTION

Age

Defects

Brands

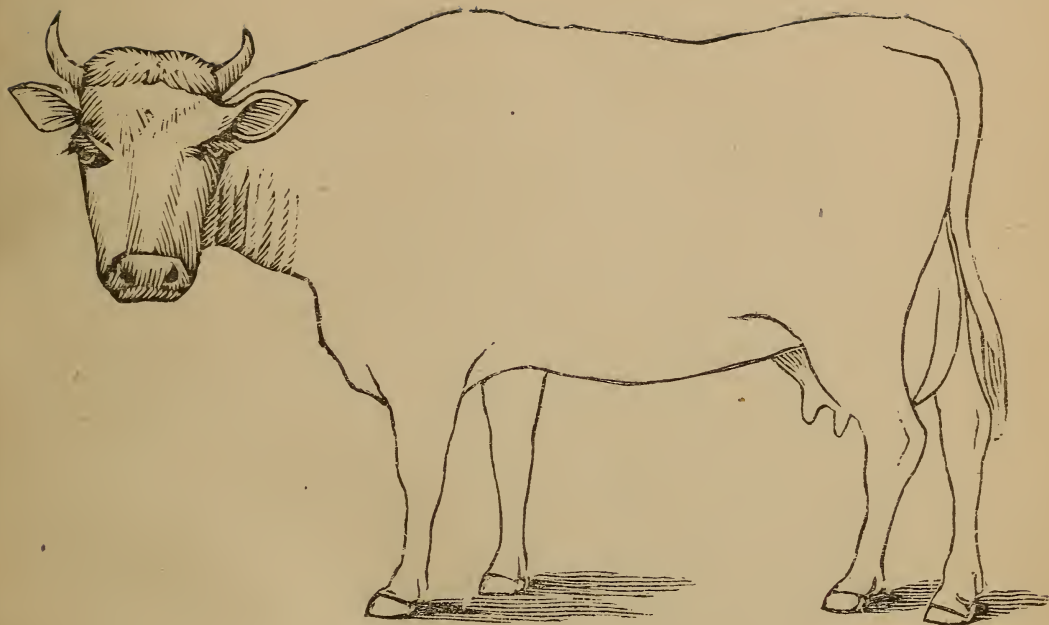


DESCRIPTION

Color

Marks

Weight

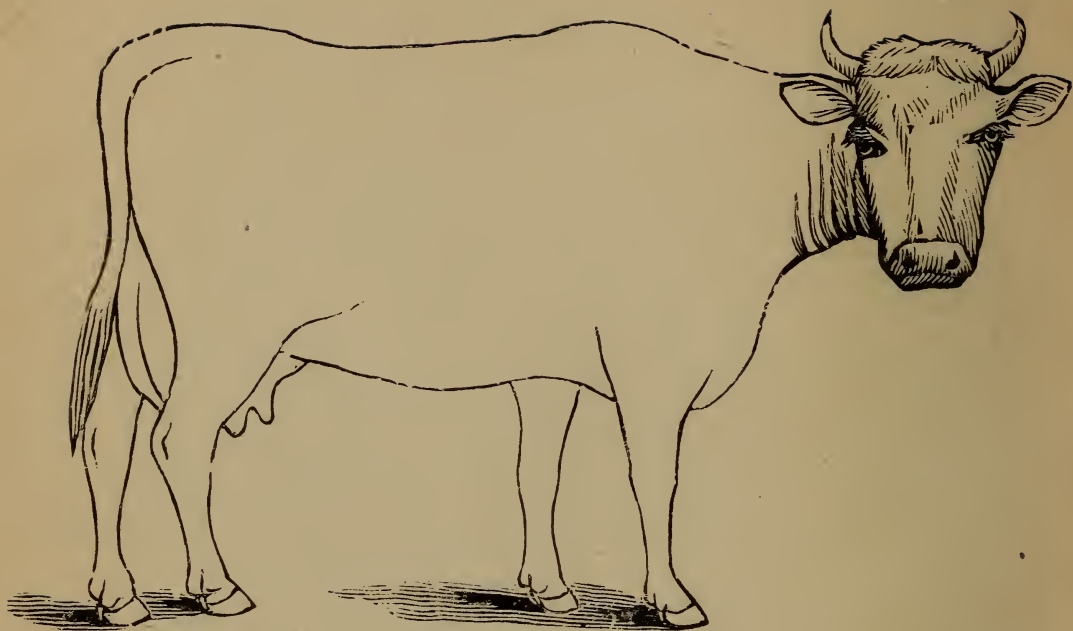


DESCRIPTION

Age

Defects

Brands

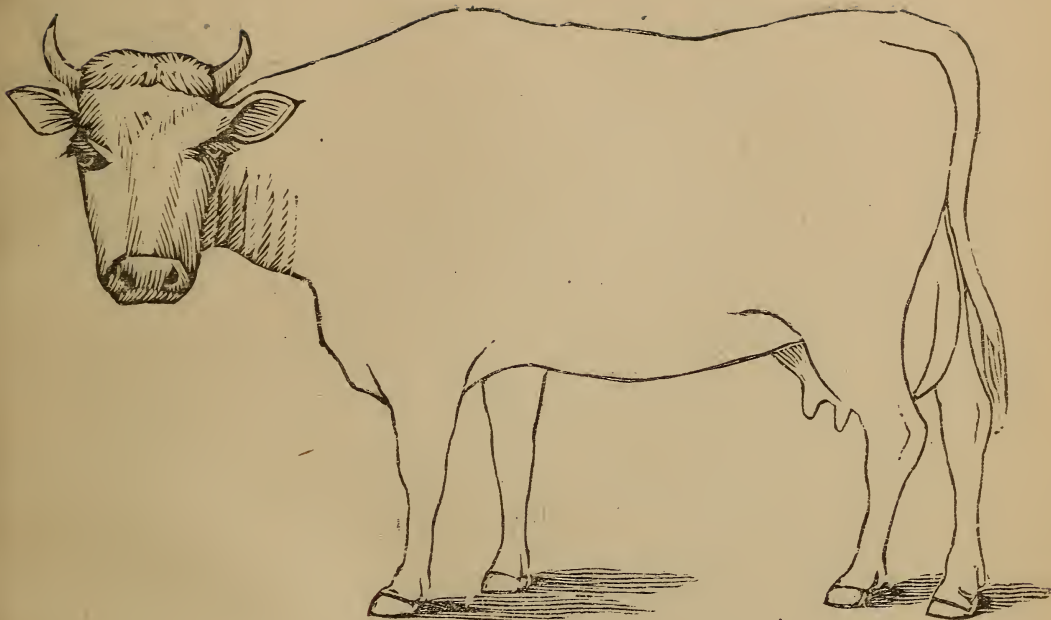


DESCRIPTION

Color

Marks

Weight

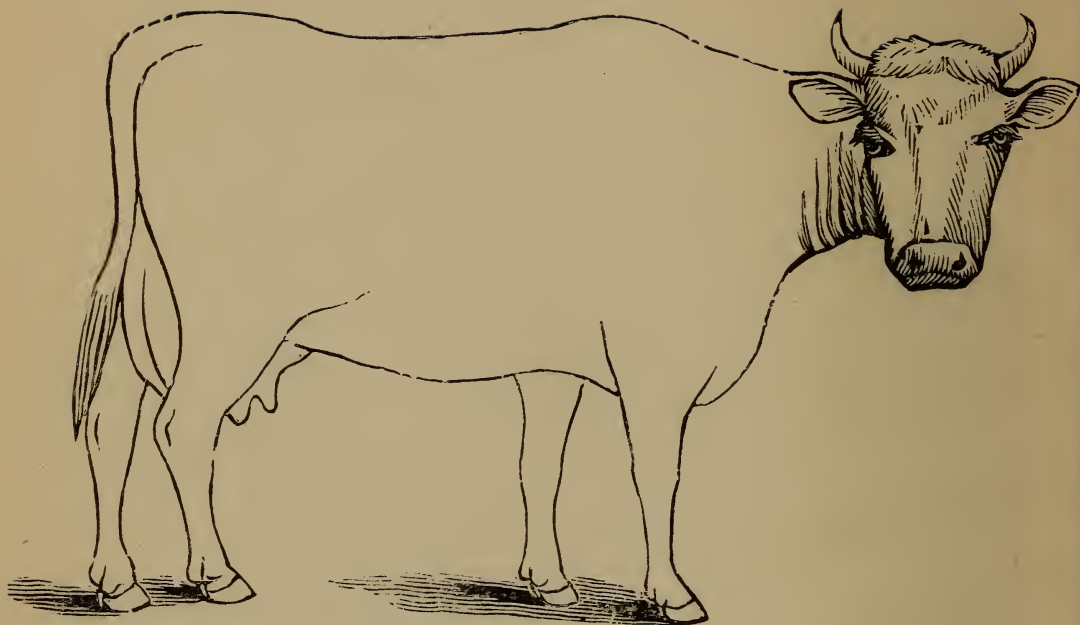


DESCRIPTION

Age

Defects

Brands

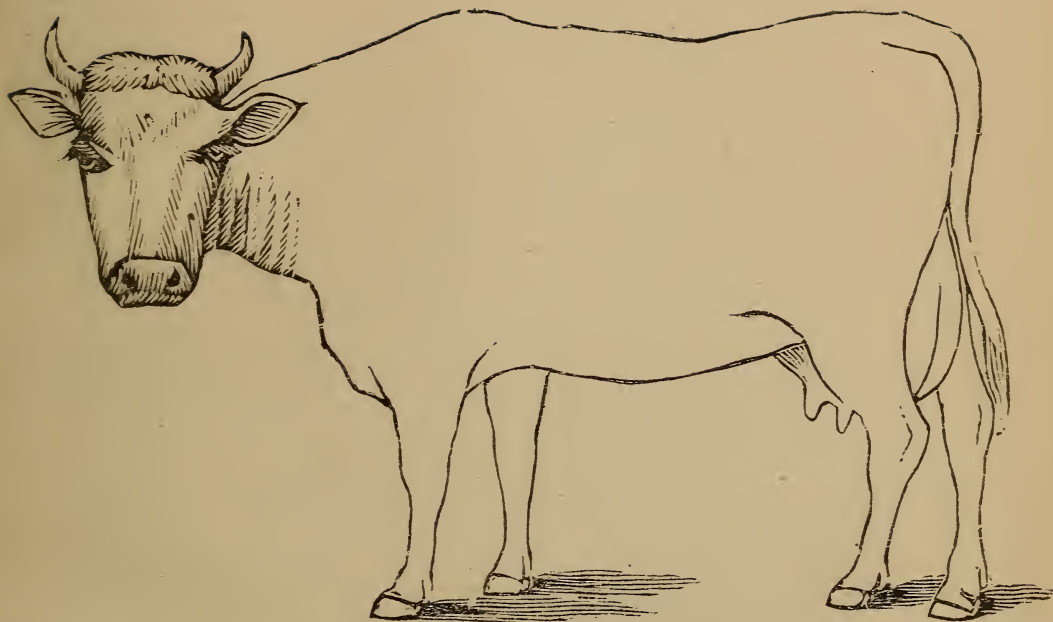


DESCRIPTION

Color

Marks

Weight

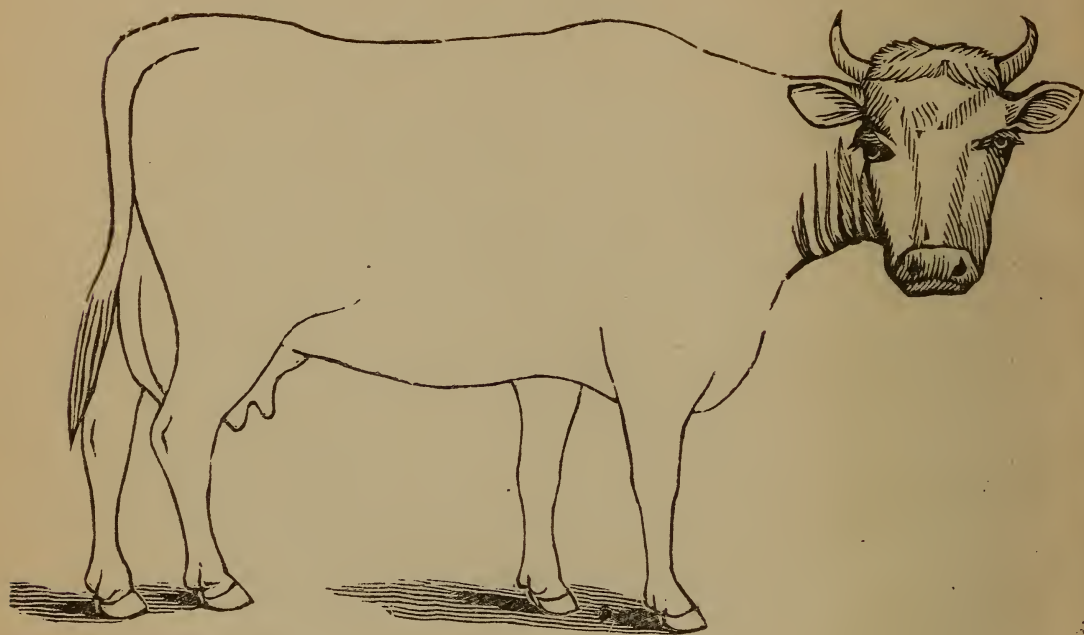


DESCRIPTION

Age

Defects

Brands

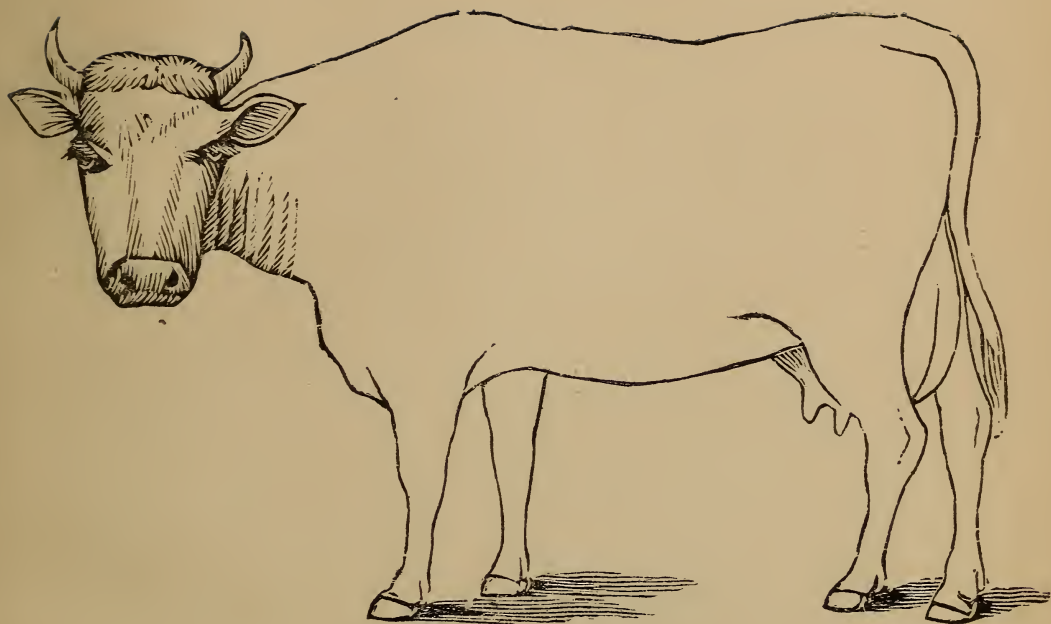


DESCRIPTION

Color.....

Marks.....

Weight.....

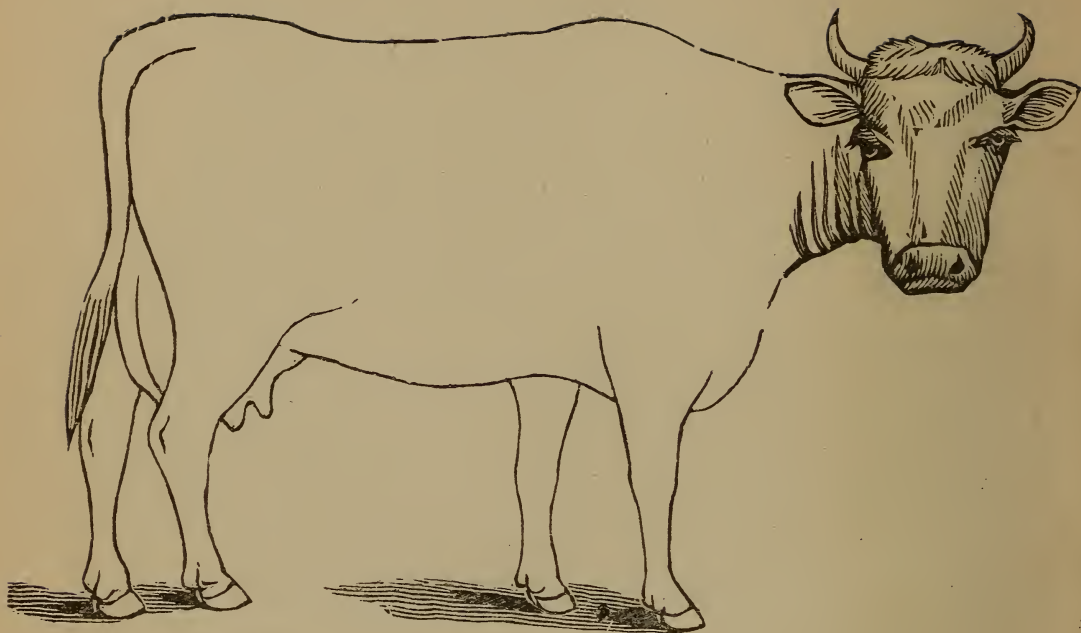


DESCRIPTION

Age

Defects

Brands

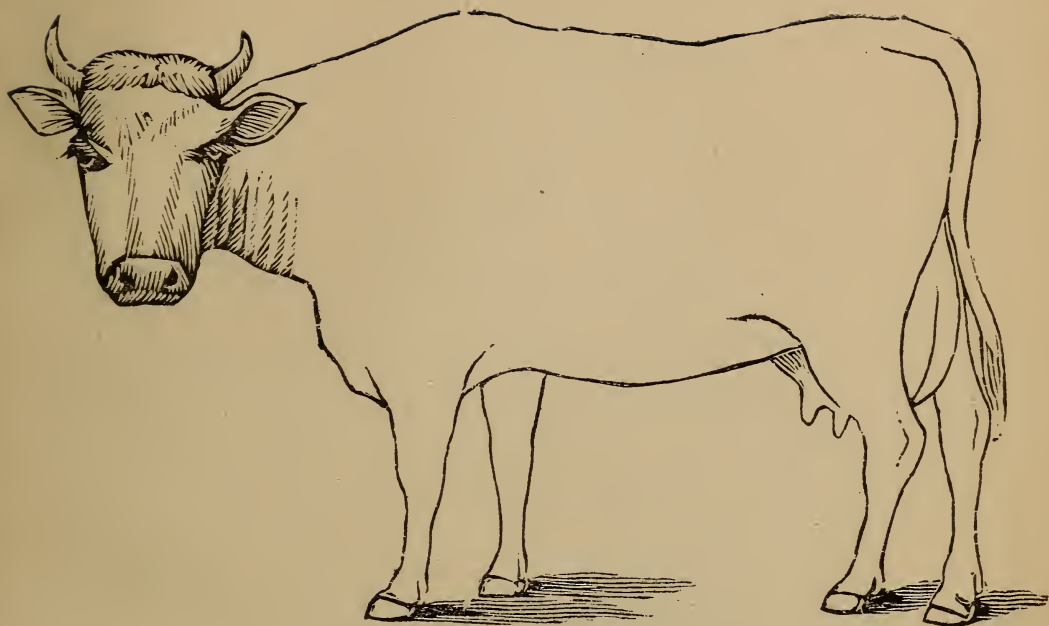


DESCRIPTION

Color.....

Marks.....

Weight.....

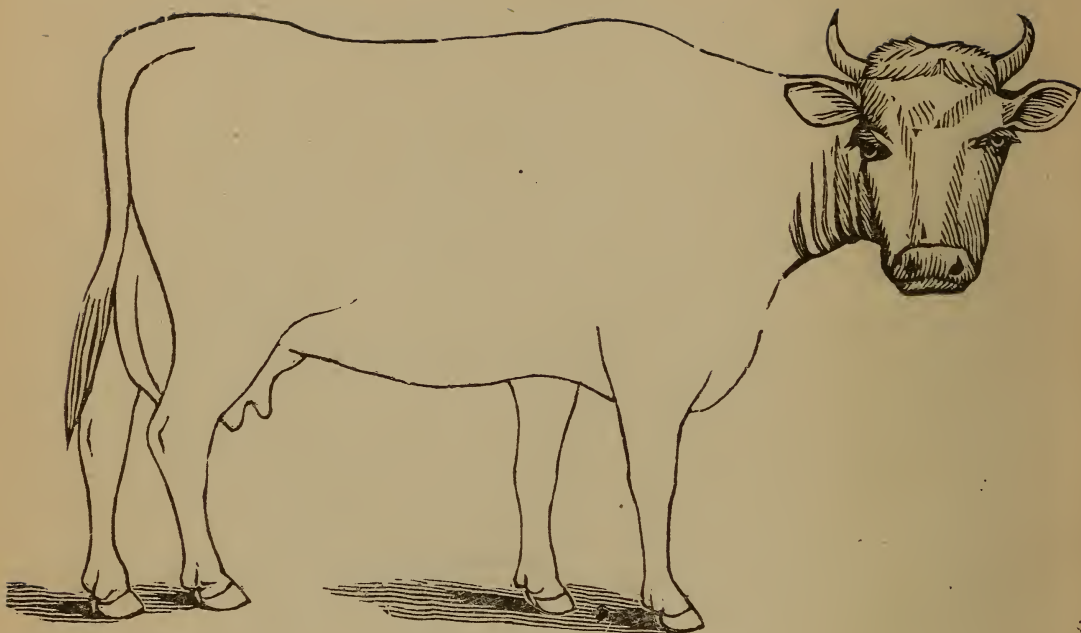


DESCRIPTION

Age

Defects

Brands

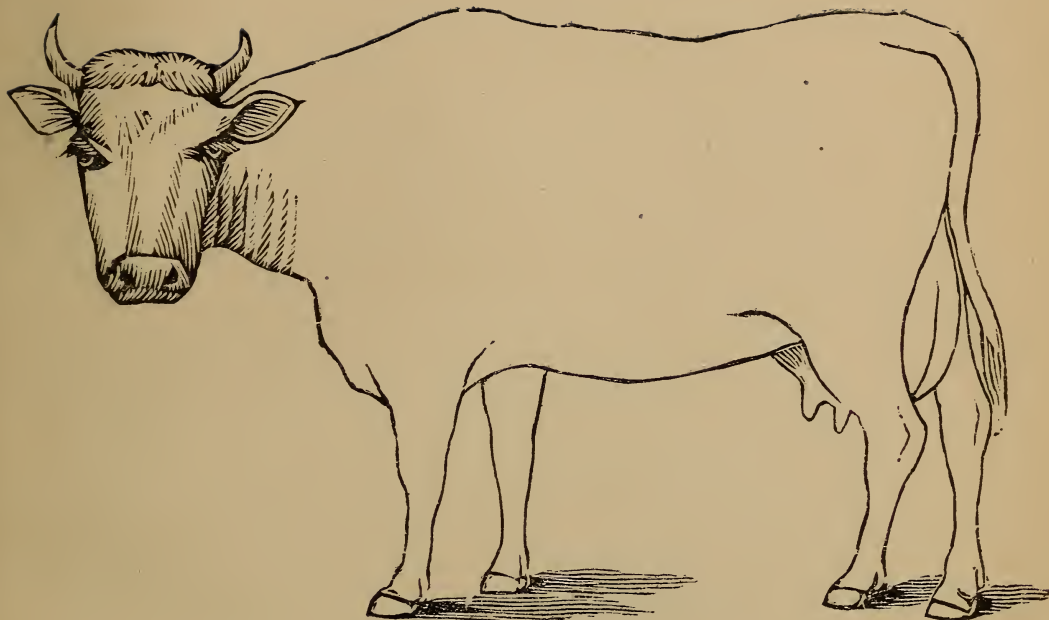


DESCRIPTION

Color.....

Marks.....

Weight.....

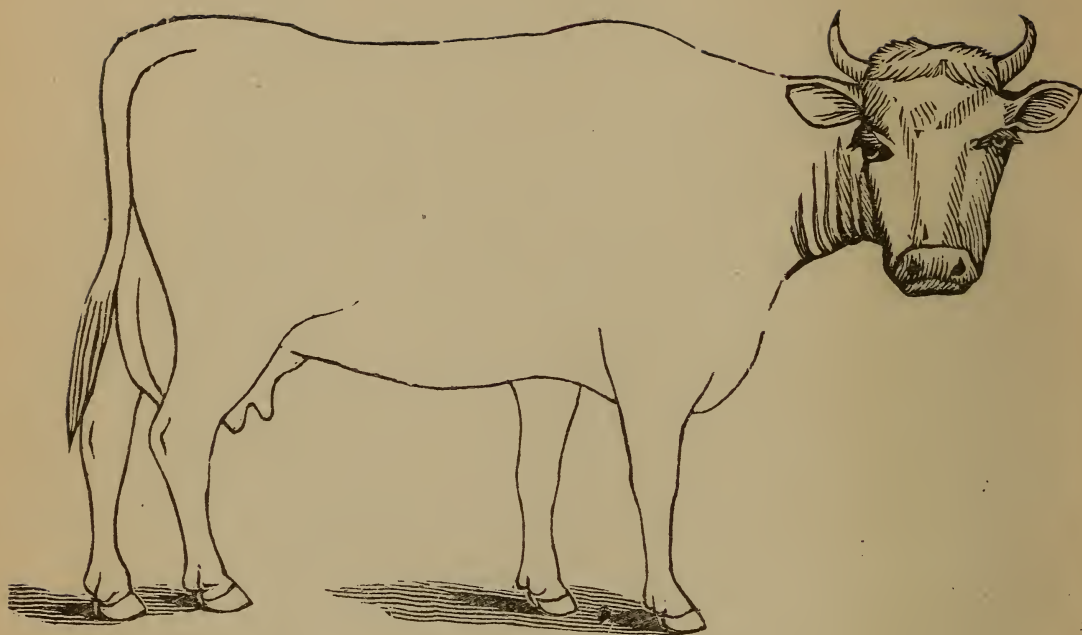


DESCRIPTION

Age

Defects

Brands

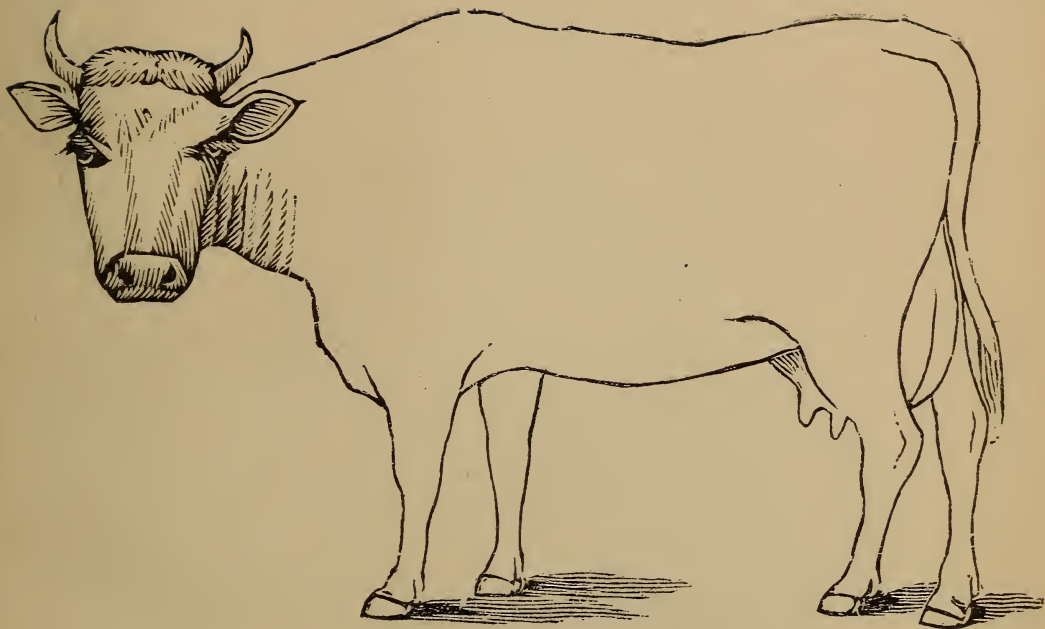


DESCRIPTION

Color.....

Marks.....

Weight.....

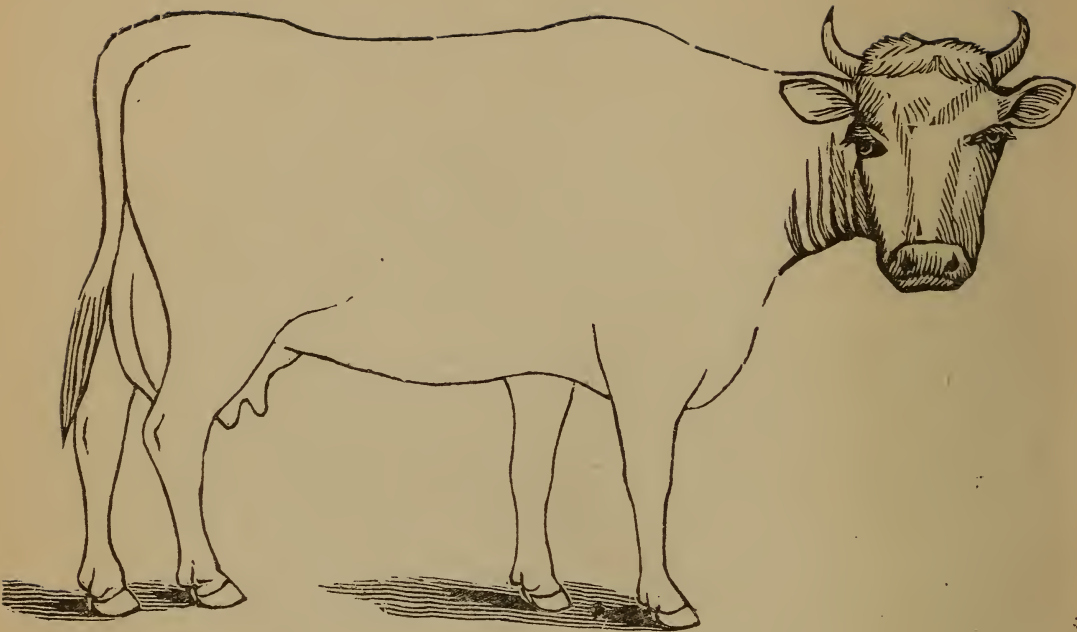


DESCRIPTION

Age

Defects

Brands

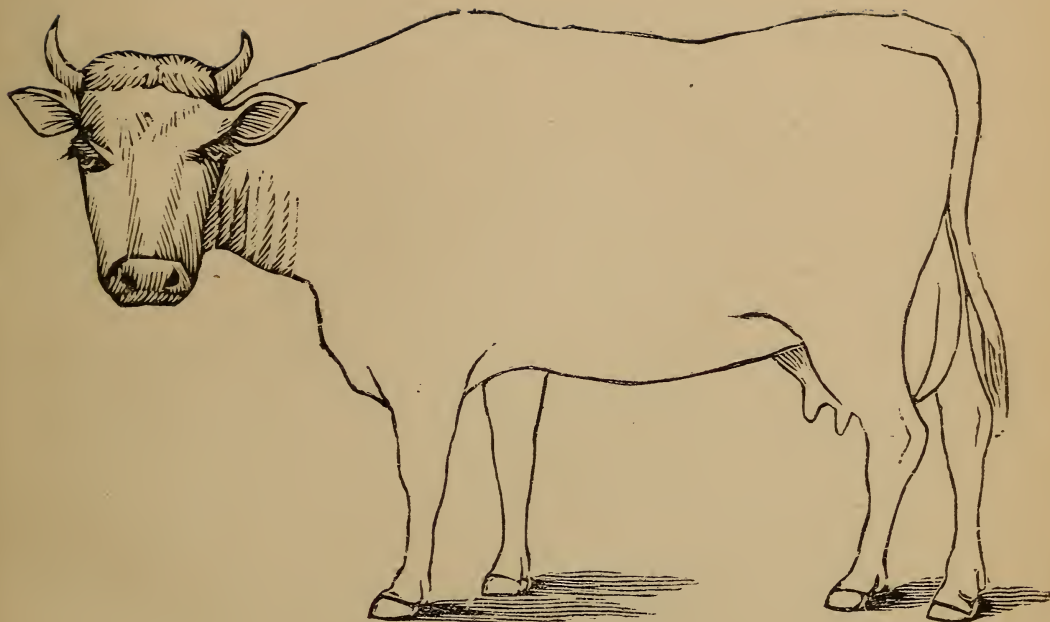


DESCRIPTION

Color.....

Marks.....

Weight.....

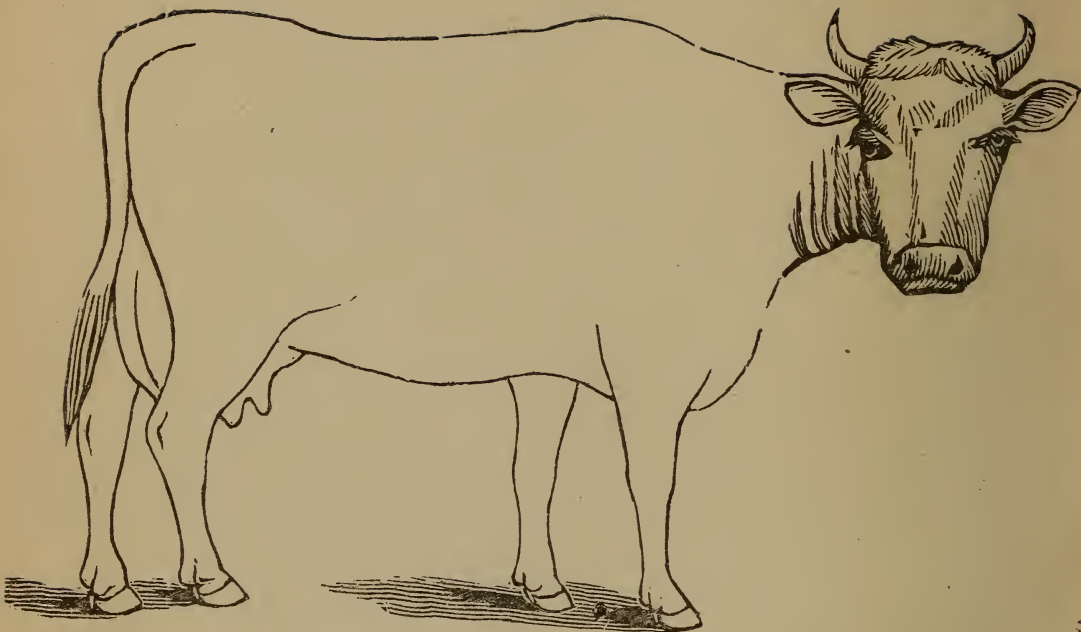


DESCRIPTION

Age

Defects

Brands

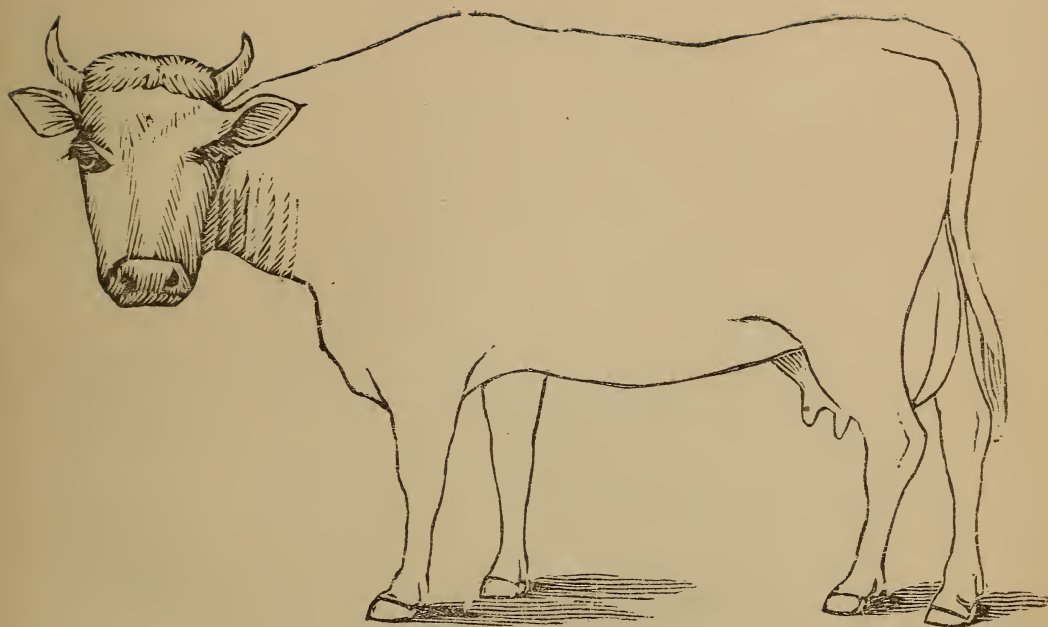


DESCRIPTION

Color.....

Marks.....

Weight.....

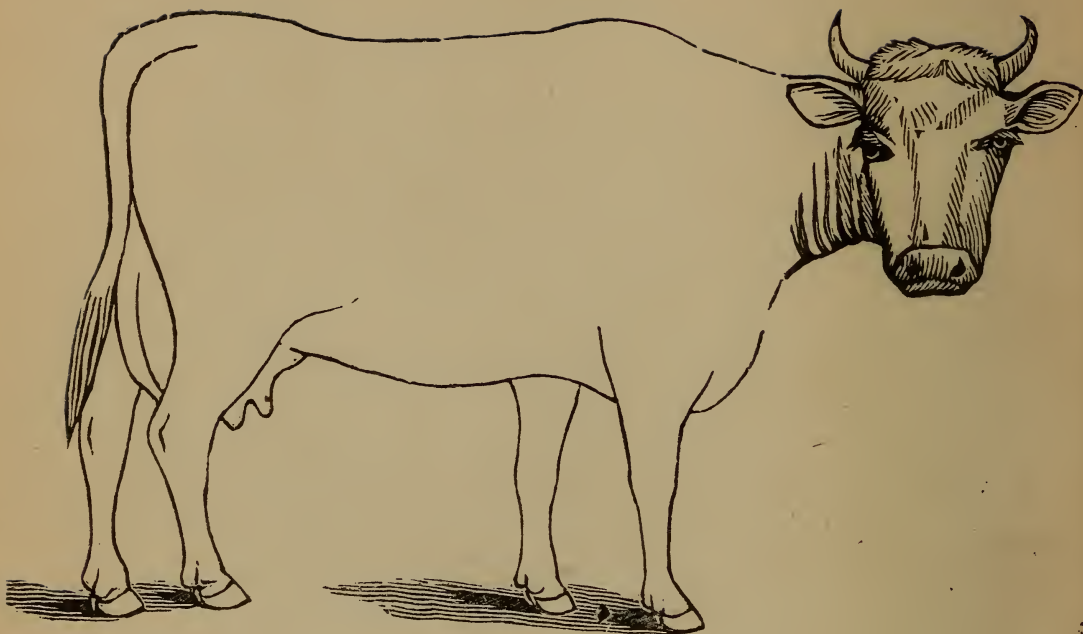


DESCRIPTION

Age

Defects

Brands

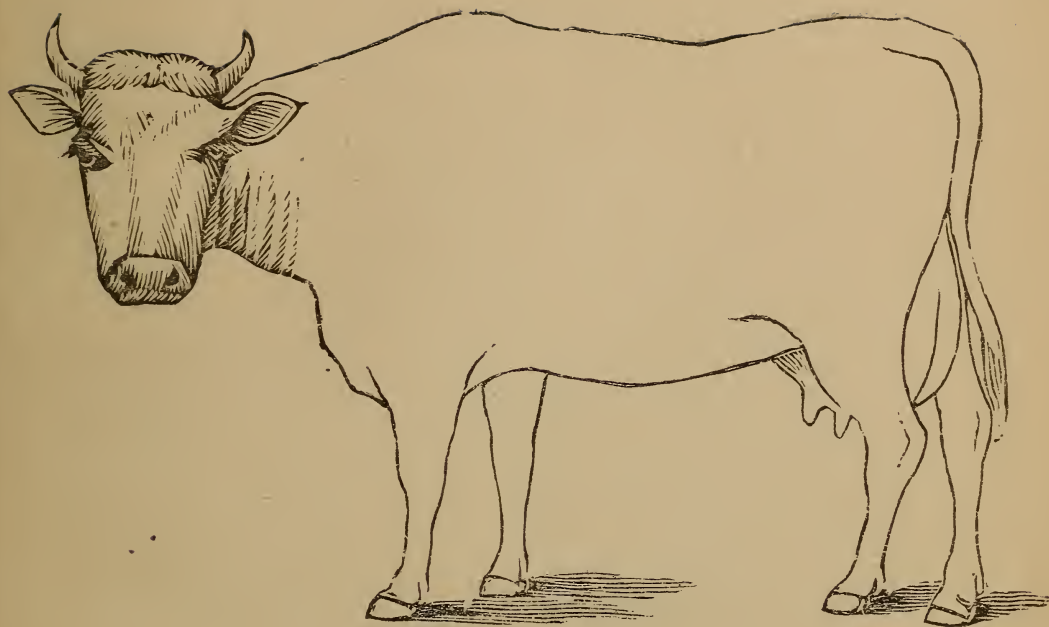


DESCRIPTION

Color.....

Marks.....

Weight.....



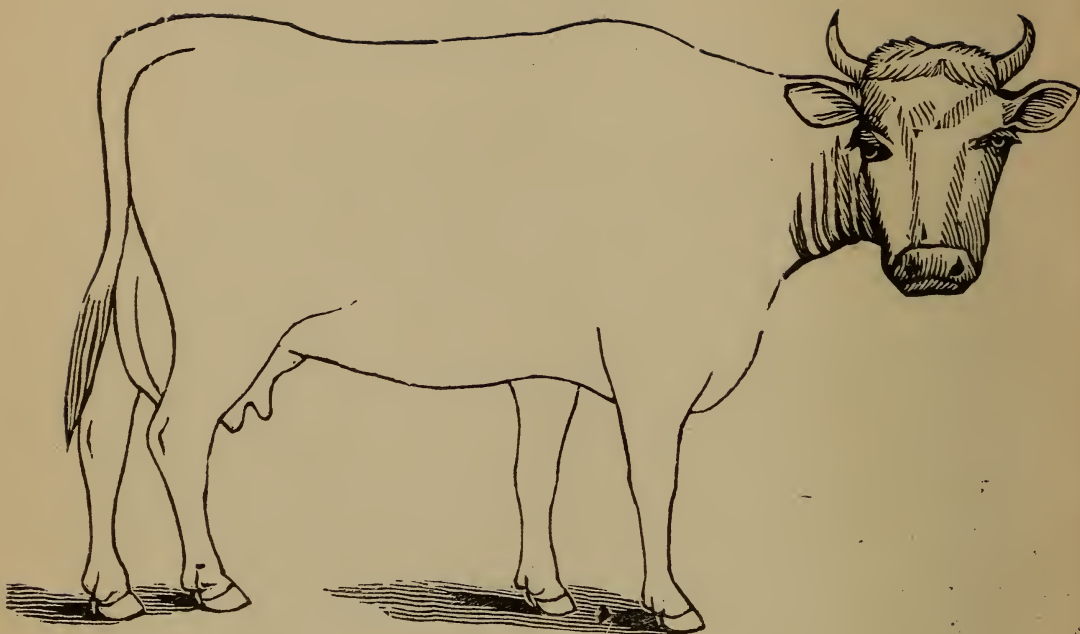
DESCRIPTION

Age

Defects

Brands

18

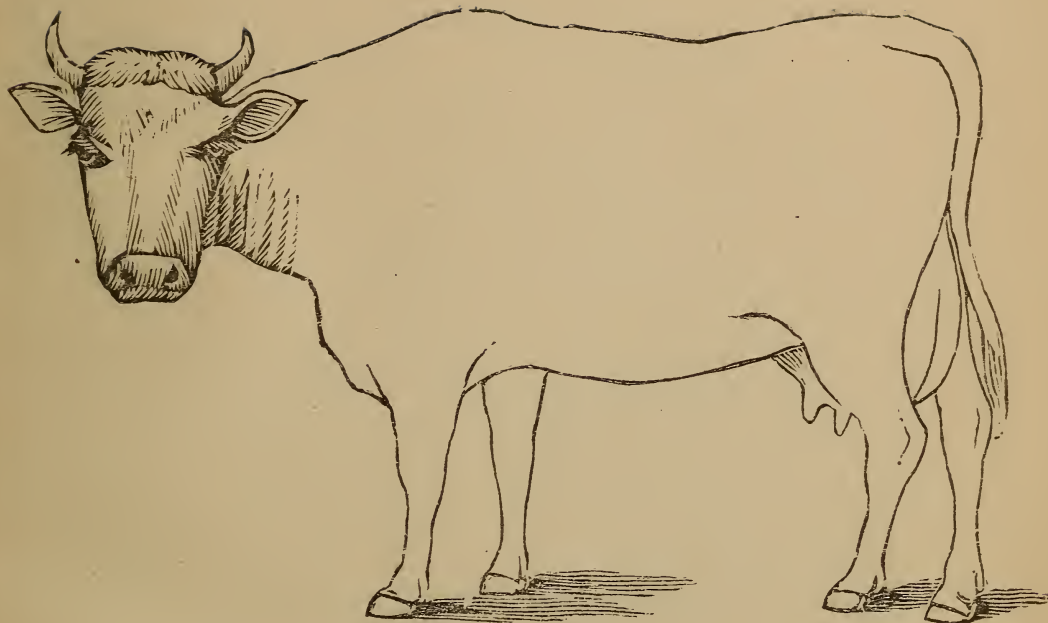


DESCRIPTION

Color.....

Marks.....

Weight.....

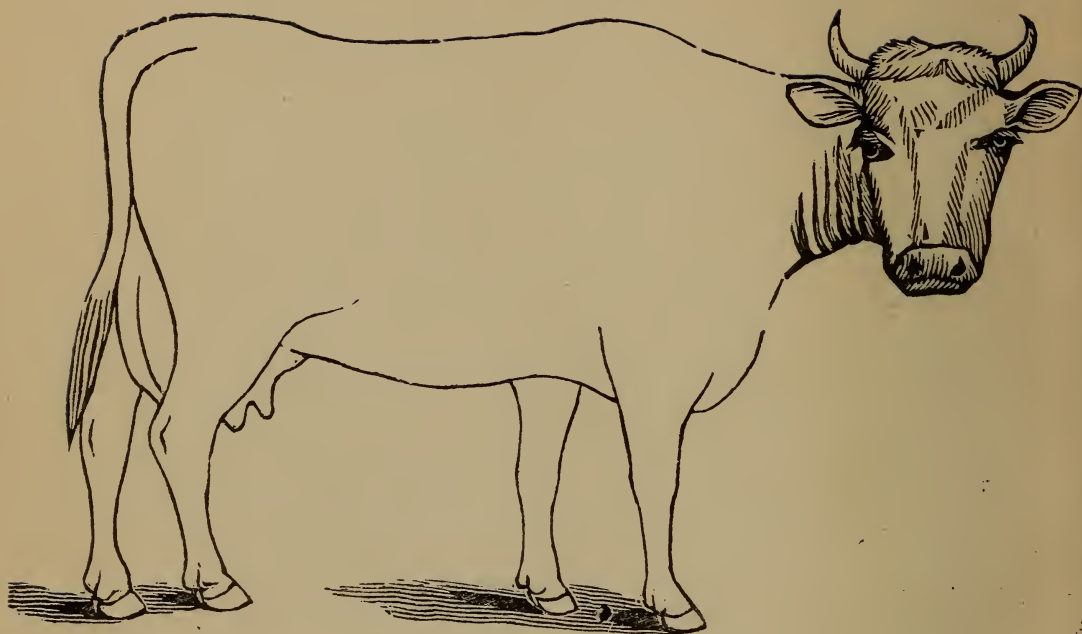


DESCRIPTION

Age

Defects

Brands

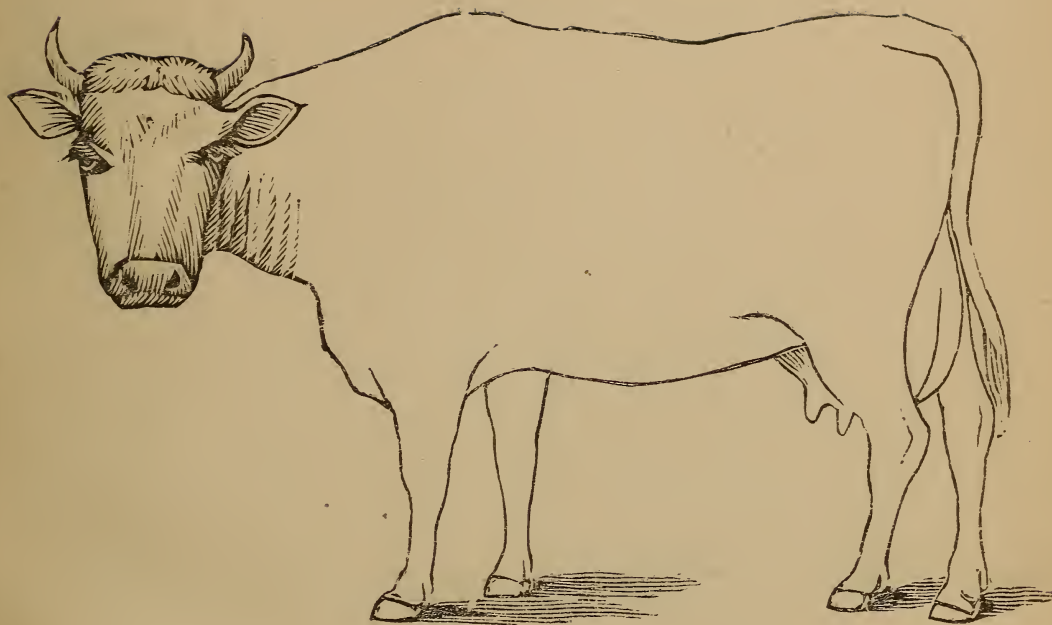


DESCRIPTION

Color.....

Marks.....

Weight.....

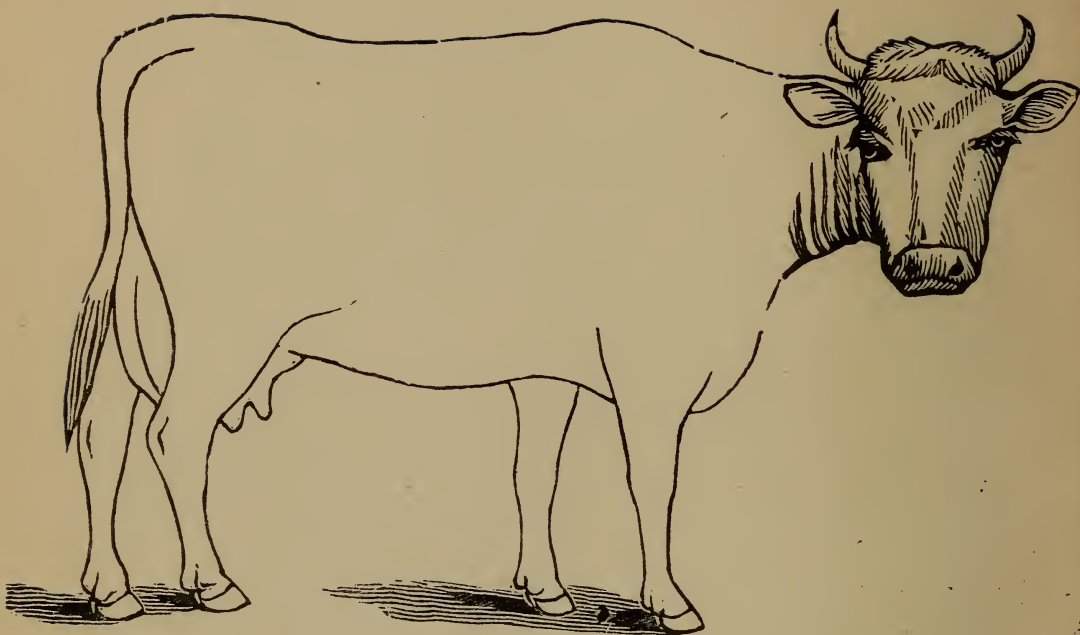


DESCRIPTION

Age

Defects

Brands

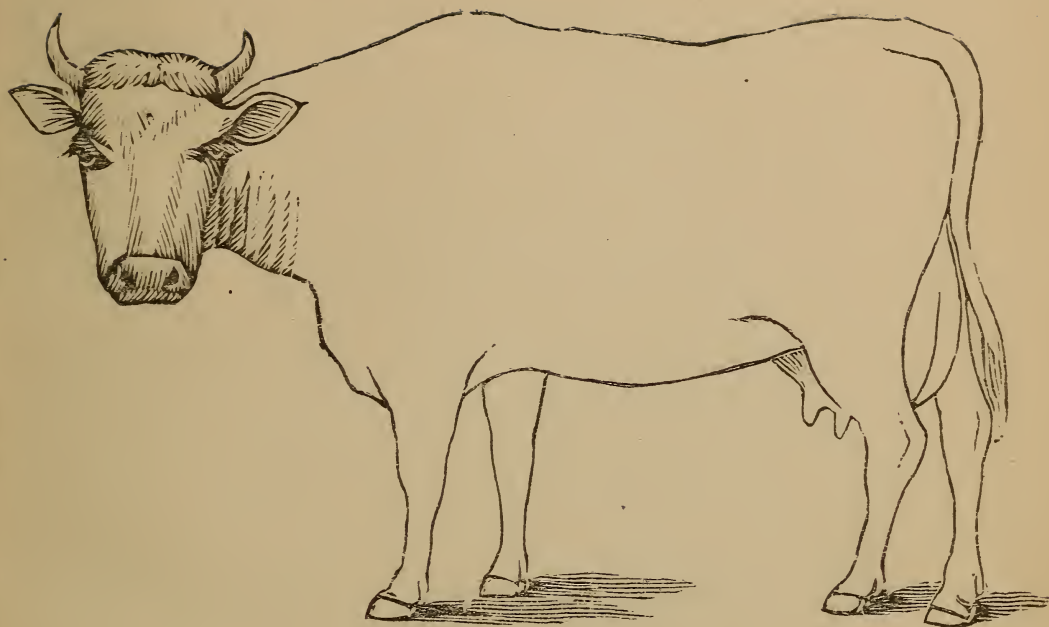


DESCRIPTION .

Color.....

Marks.....

Weight.....

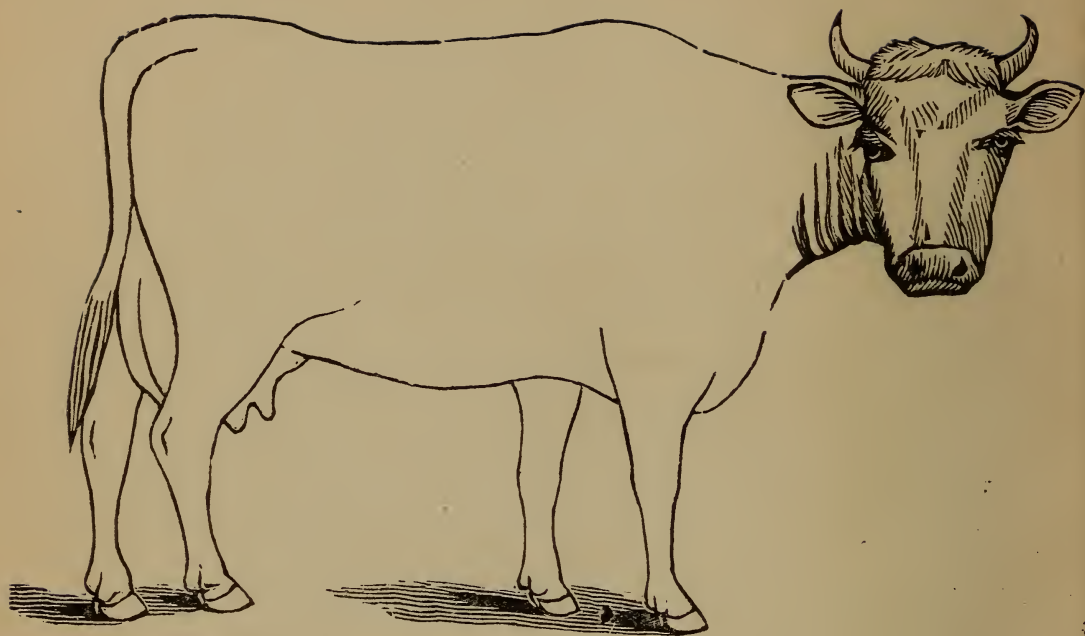


DESCRIPTION

Age

Defects

Brands

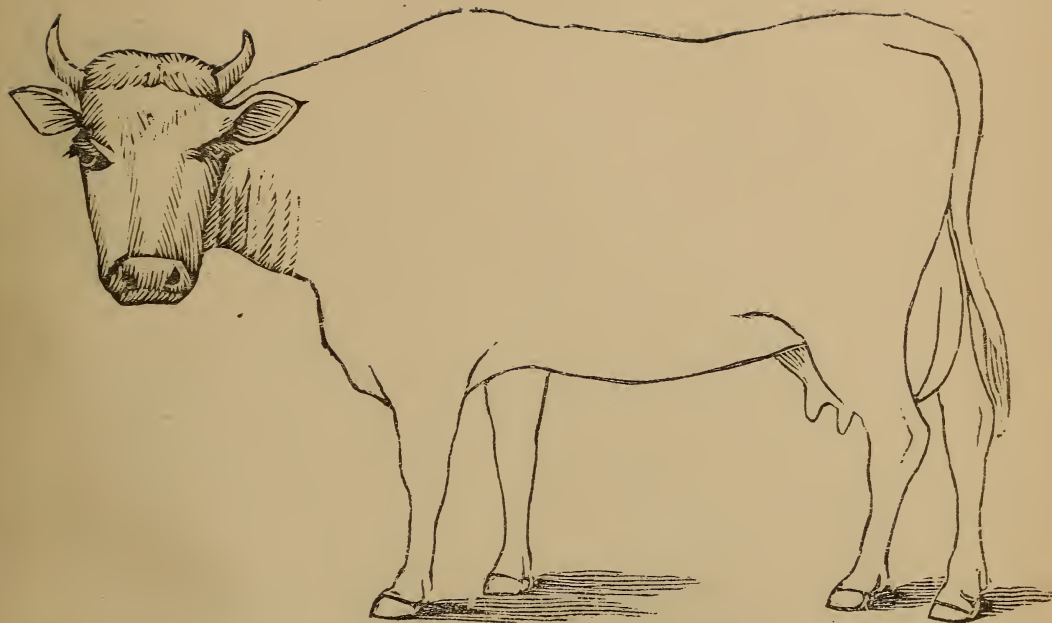


DESCRIPTION

Color.....

Marks.....

Weight.....

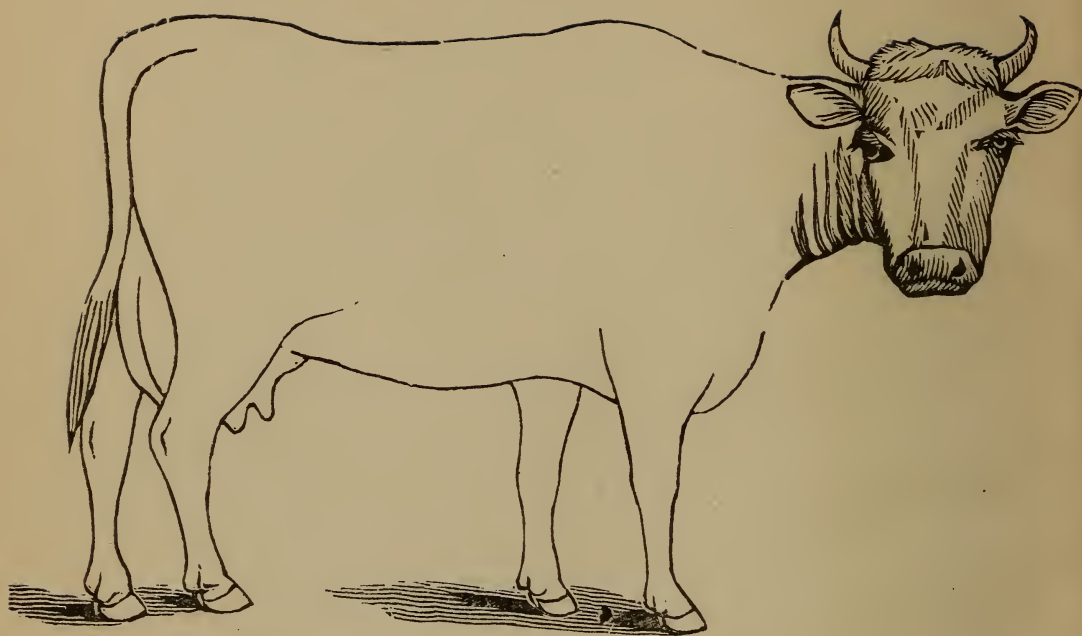


DESCRIPTION

Age

Defects

Brands

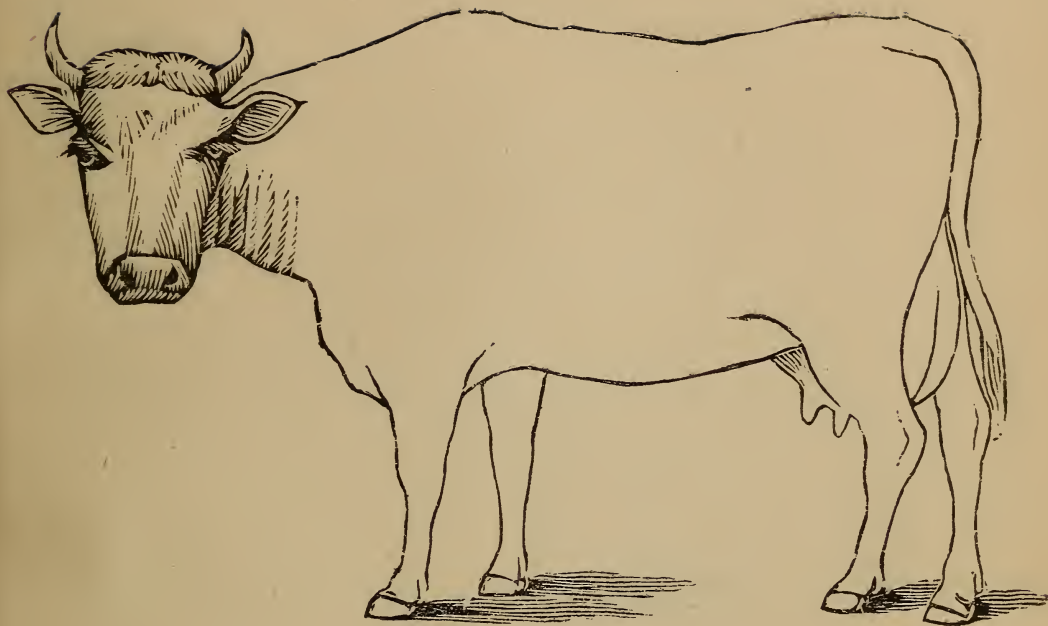


DESCRIPTION

Color.....

Marks.....

Weight.....

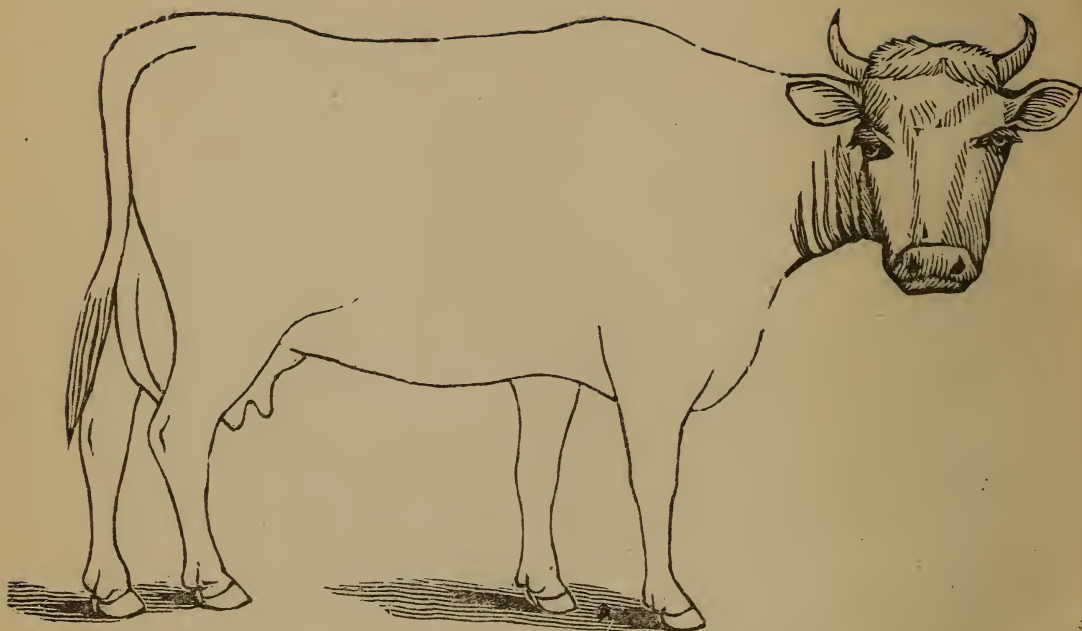


DESCRIPTION

Age

Defects

Brands

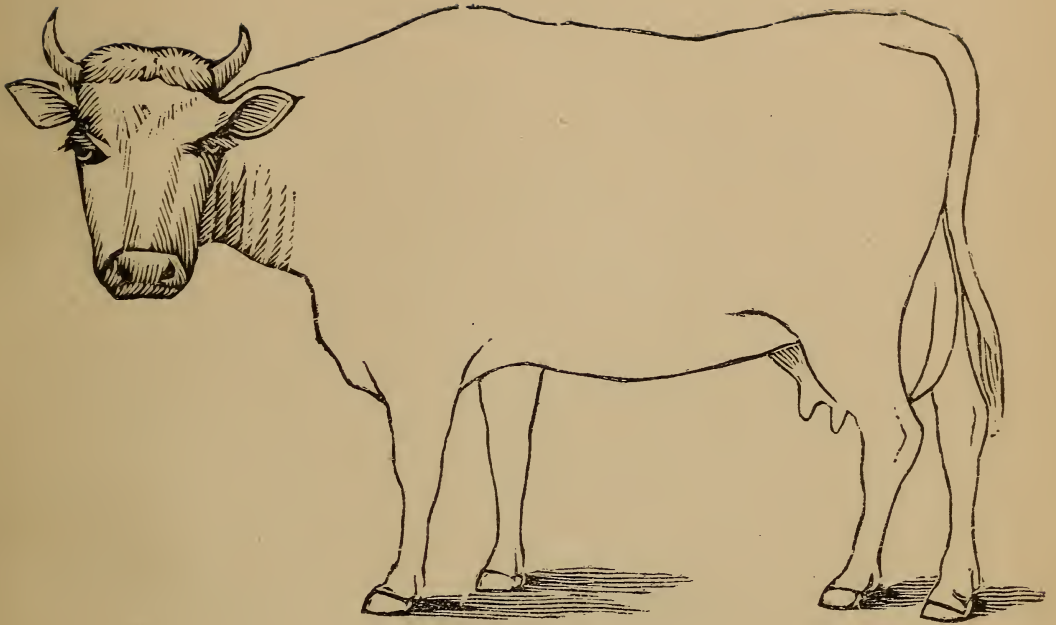


DESCRIPTION

Color.....

Marks.....

Weight.....

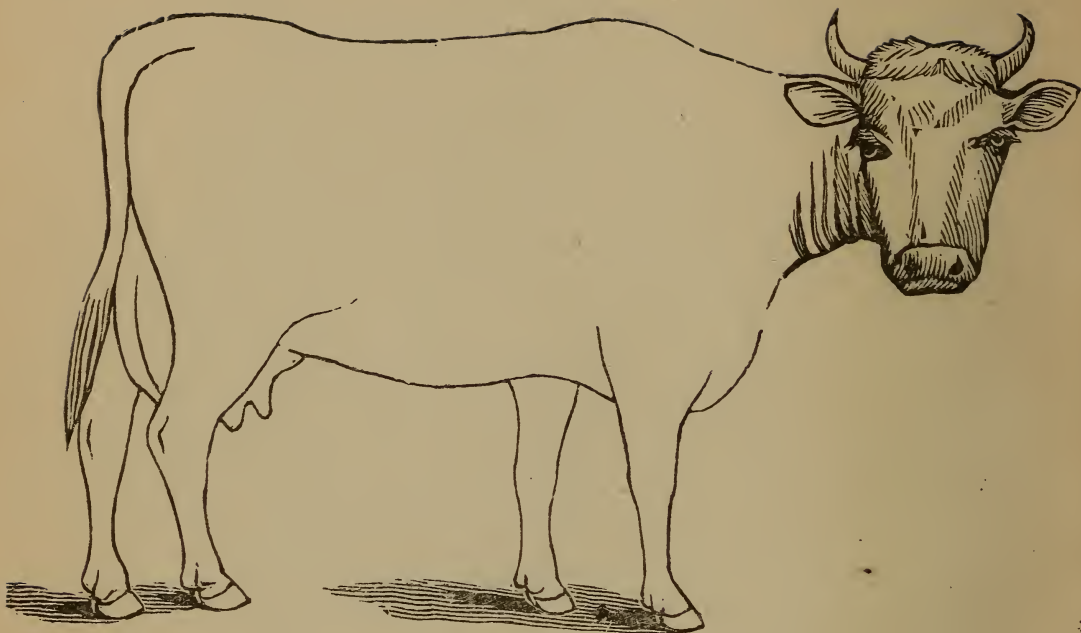


DESCRIPTION

Age

Defects

Brands

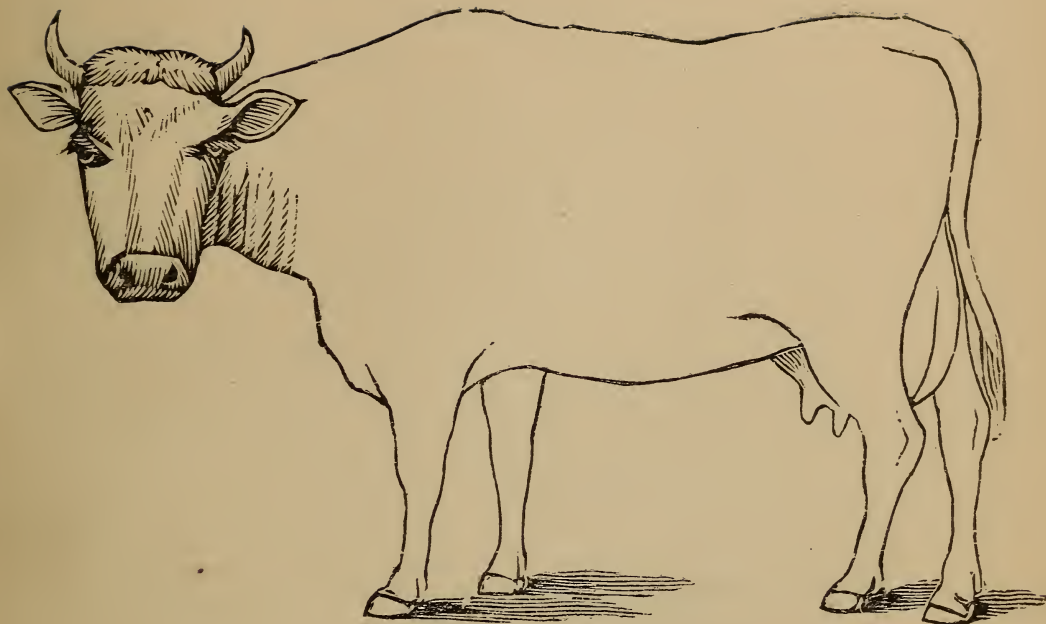


DESCRIPTION

Color.....

Marks.....

Weight.....

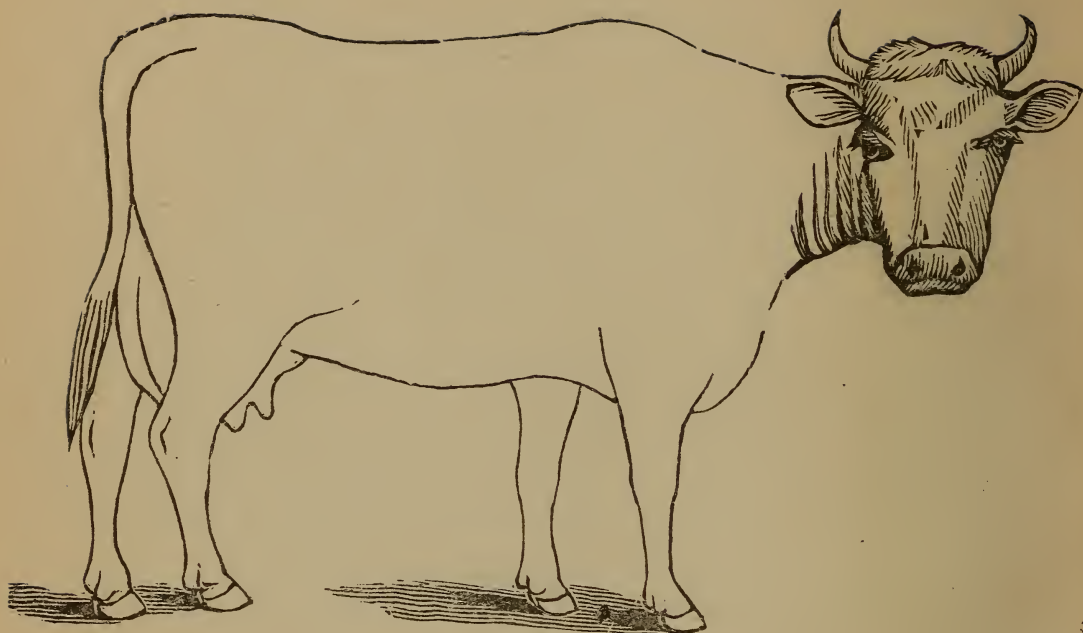


DESCRIPTION

Age

Defects

Brands

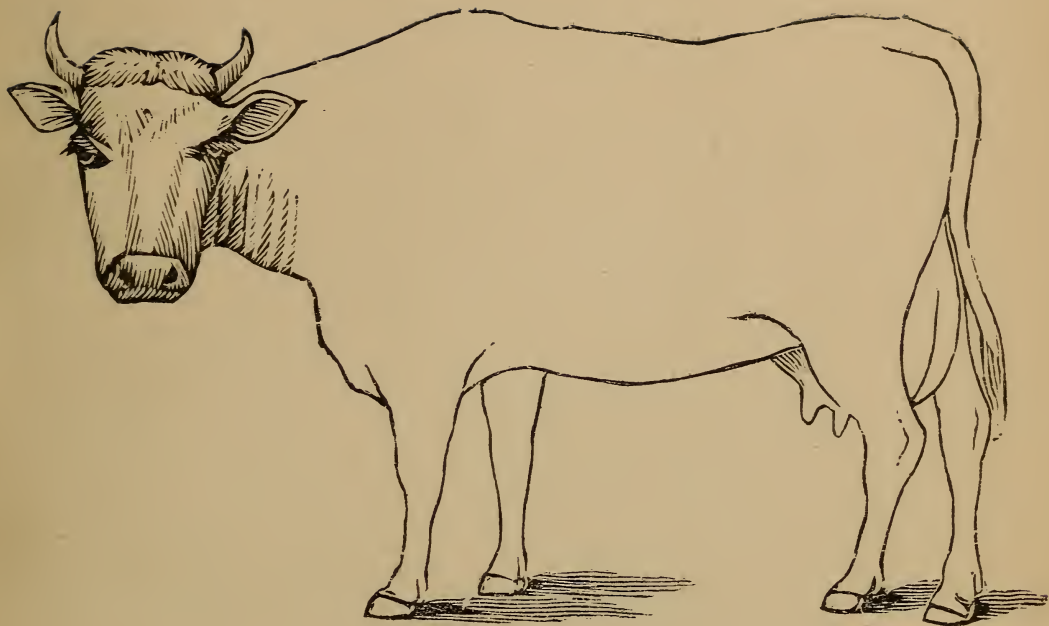


DESCRIPTION

Color.....

Marks.....

Weight.....

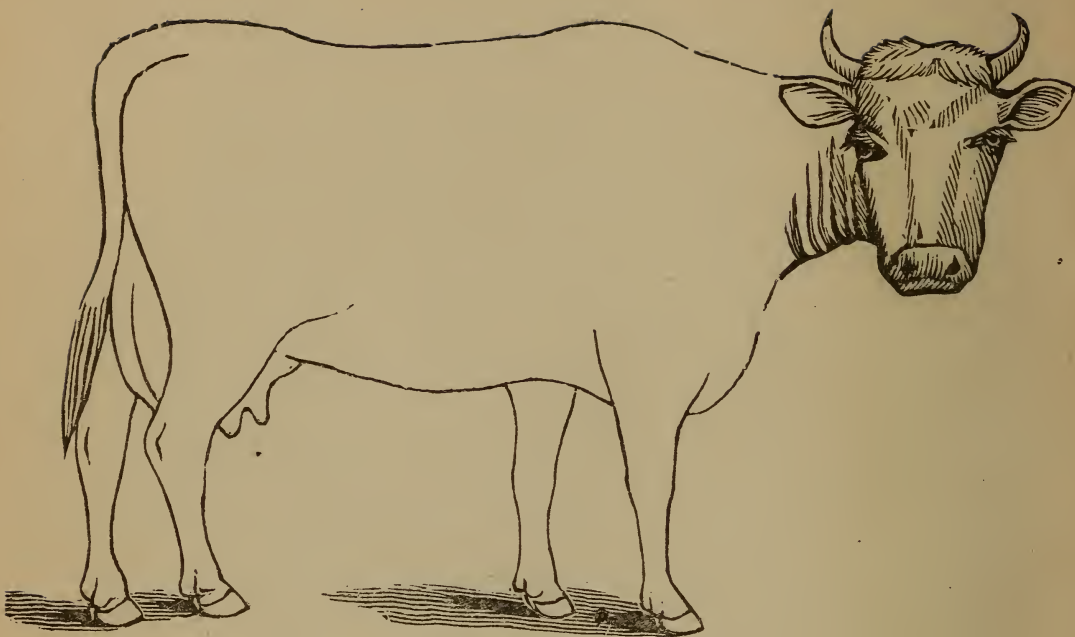


DESCRIPTION

Age

Defects

Brands

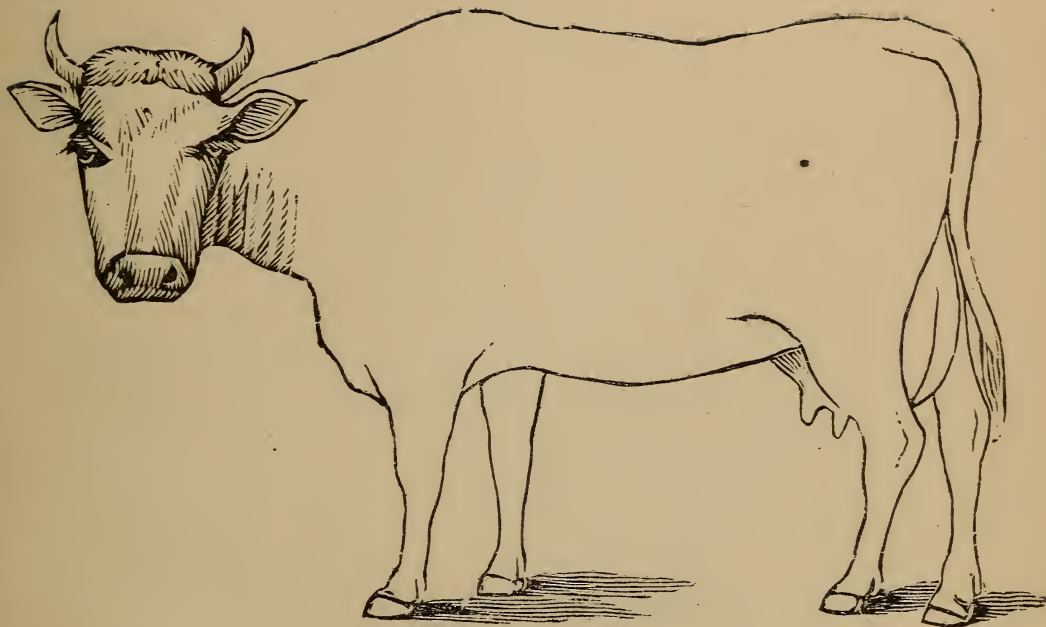


DESCRIPTION

Color.....

Marks.....

Weight.....

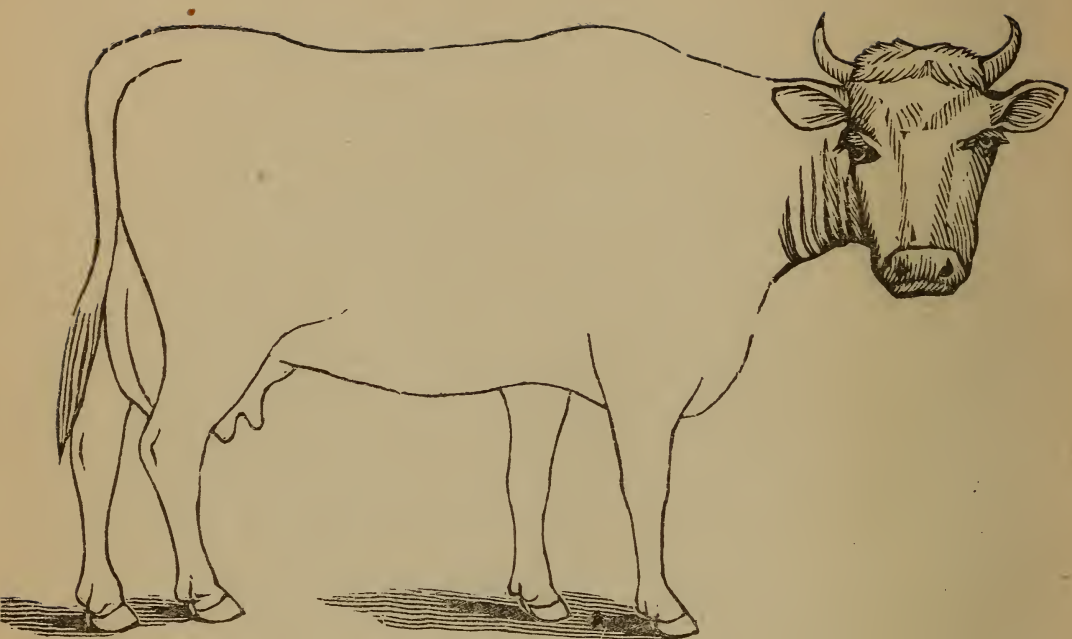


DESCRIPTION

Age

Defects

Brands

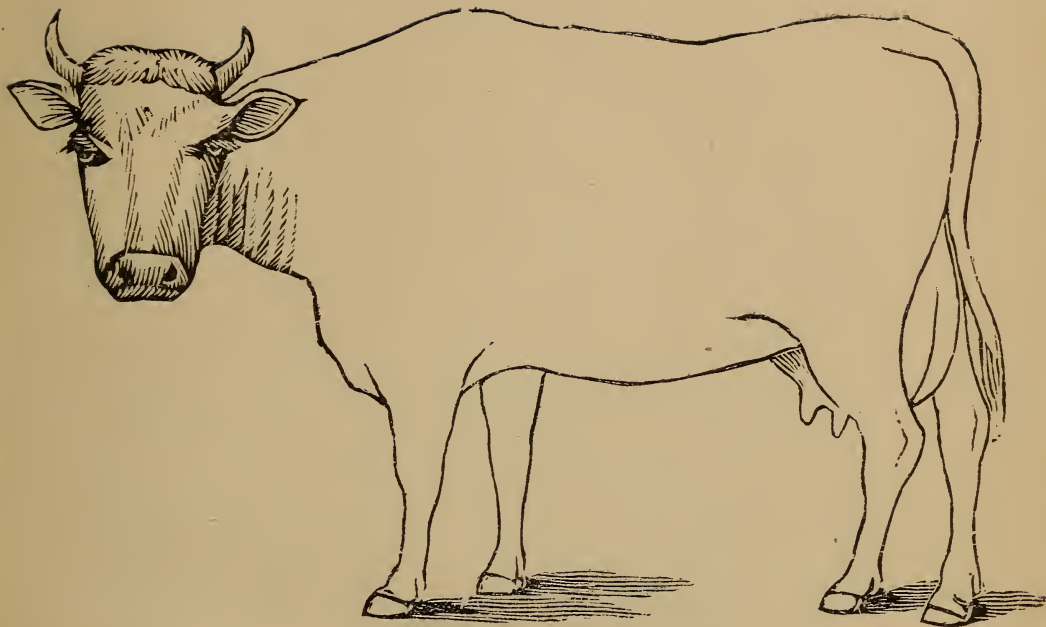


DESCRIPTION

Color.....

Marks.....

Weight.....

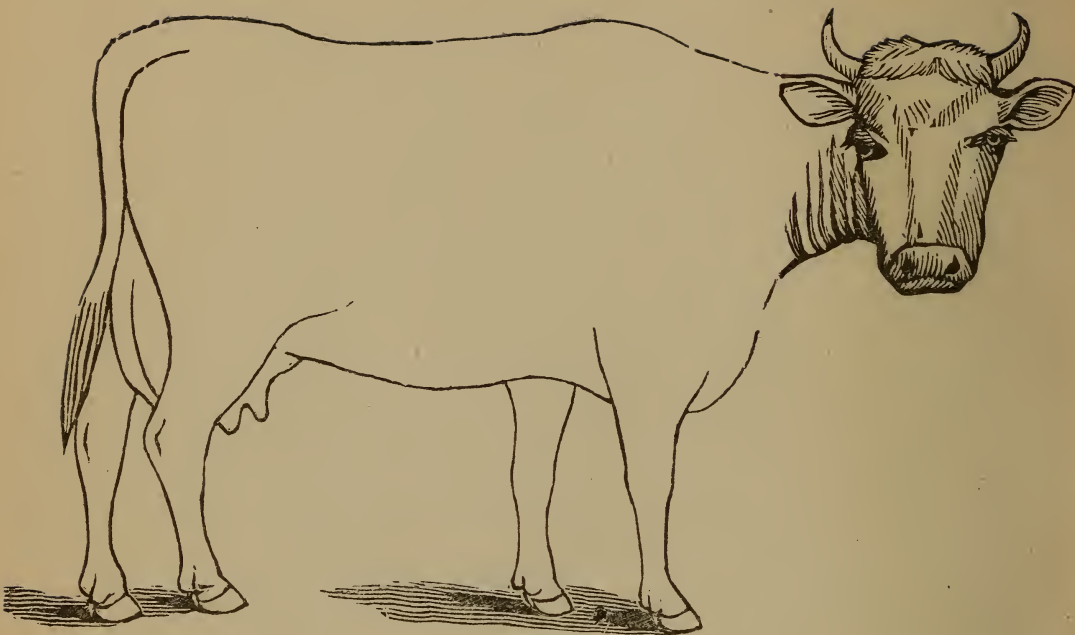


DESCRIPTION

Age

Defects

Brands

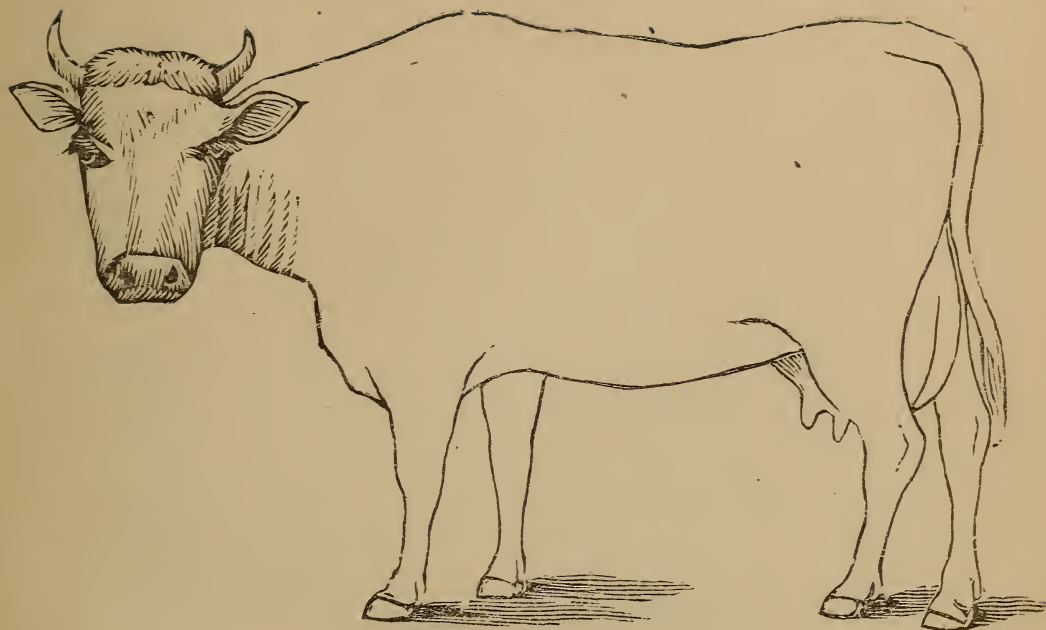


DESCRIPTION

Color.....

Marks.....

Weight.....

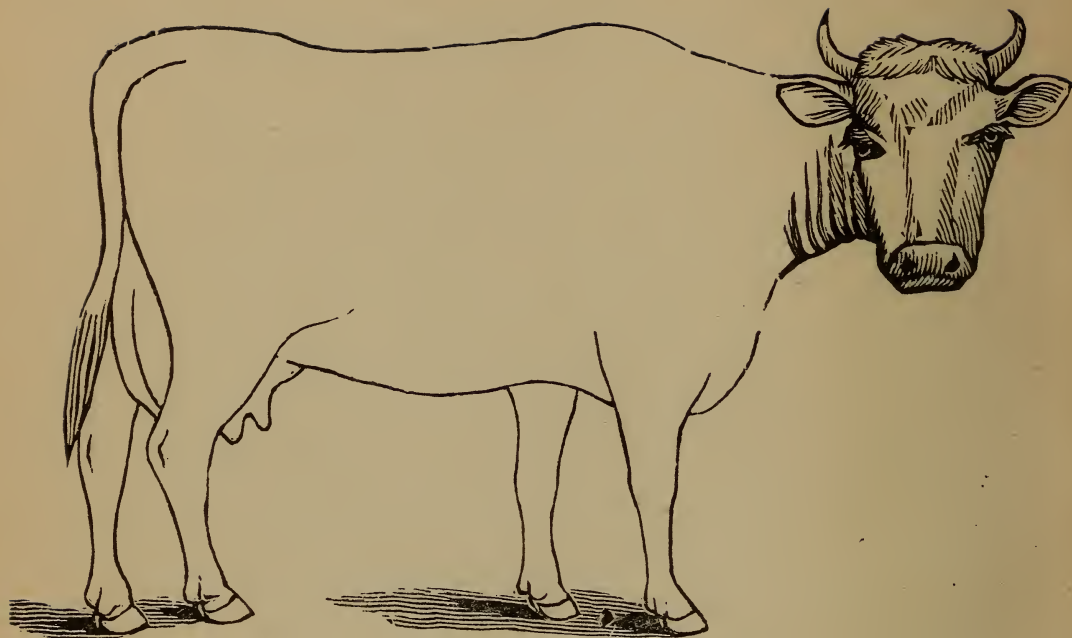


DESCRIPTION

Age

Defects

Brands

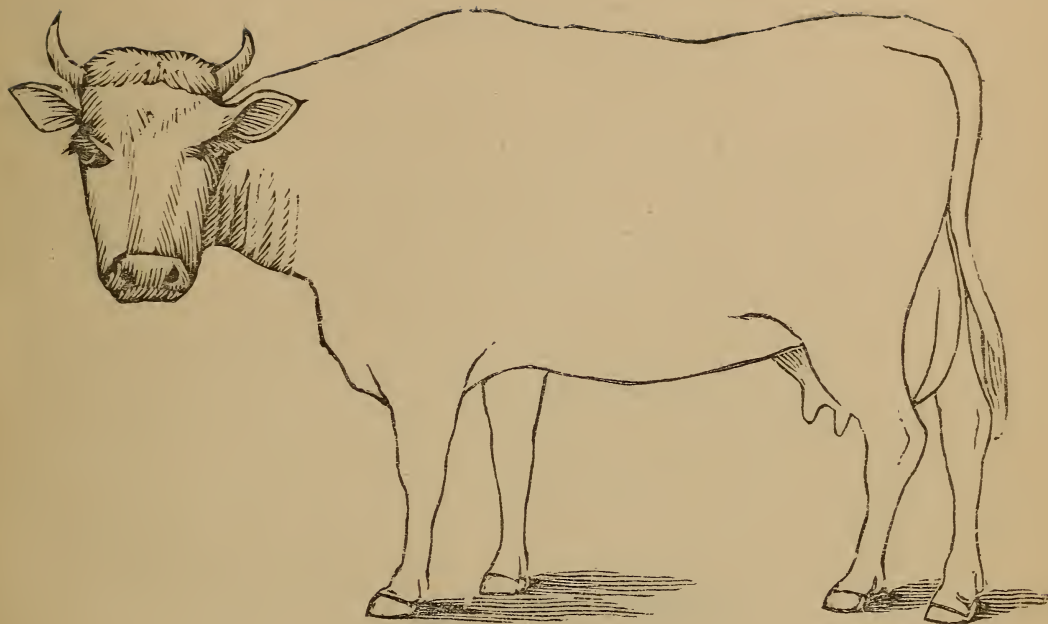


DESCRIPTION

Color.....

Marks.....

Weight.....

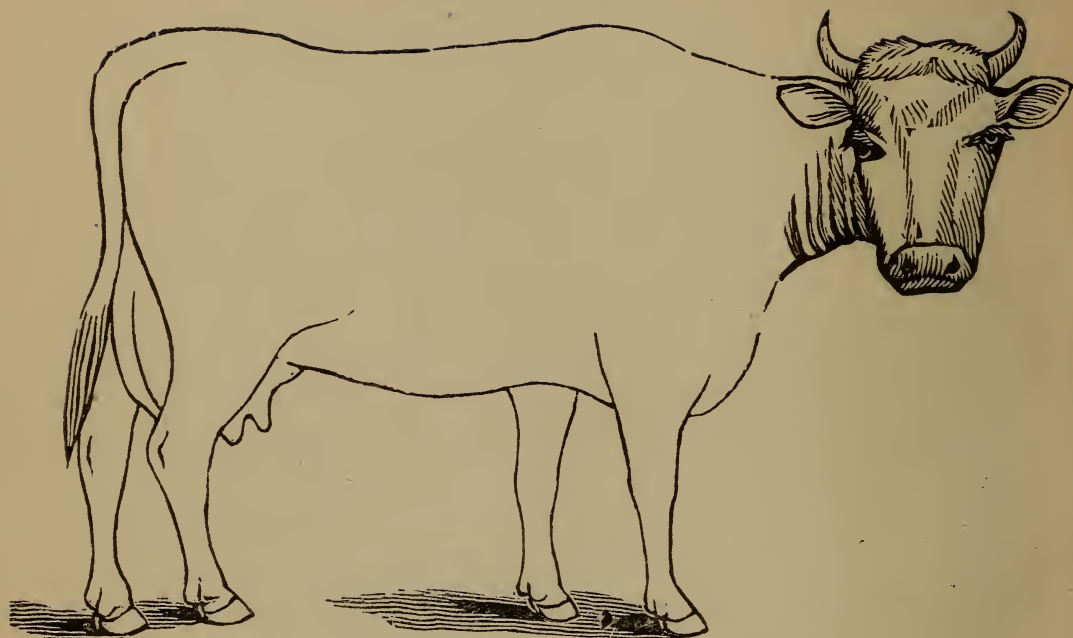


DESCRIPTION

Age

Defects

Brands

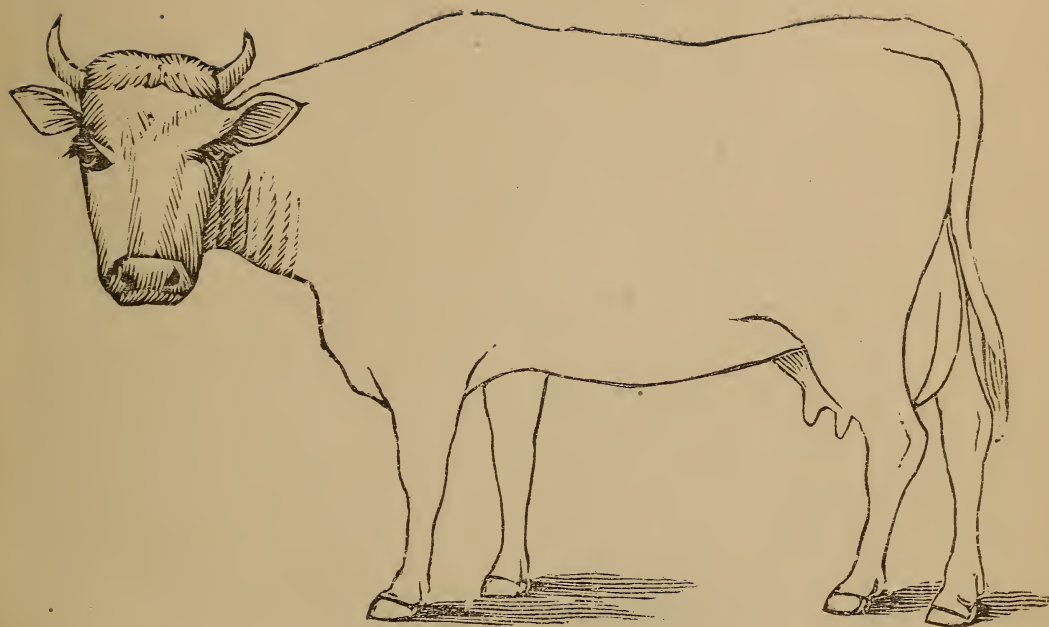


DESCRIPTION

Color.....

Marks.....

Weight.....

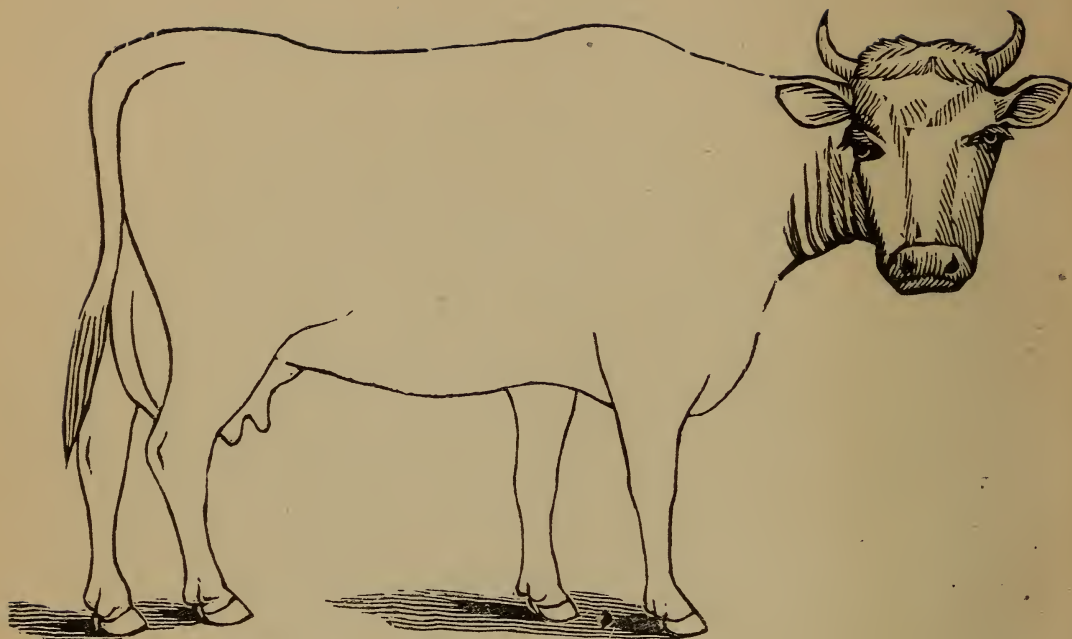


DESCRIPTION

Age

Defects

Brands

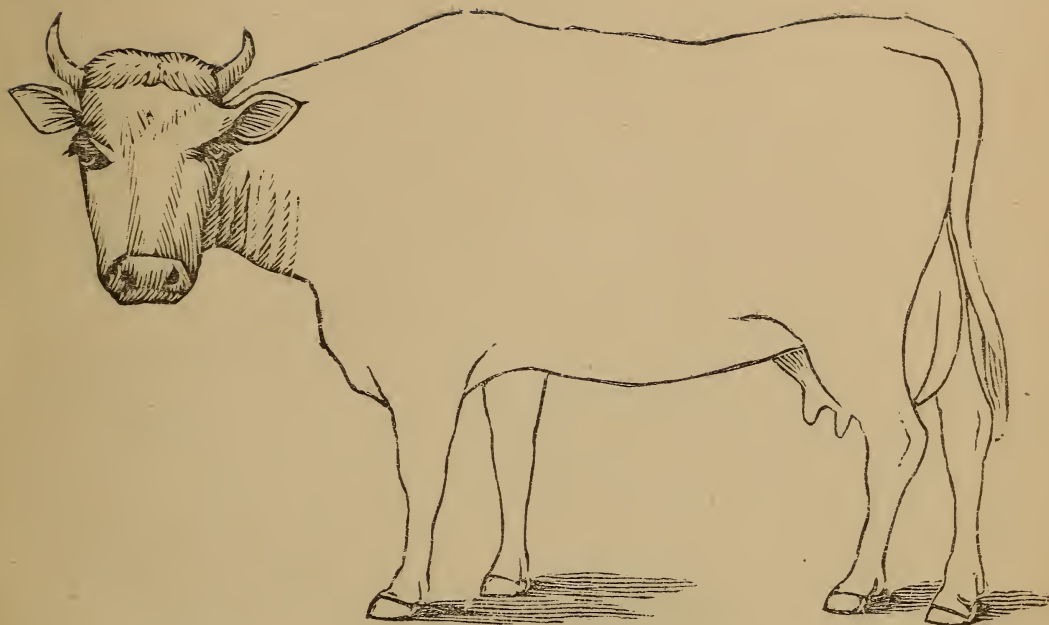


DESCRIPTION

Color.....

Marks.....

Weight.....

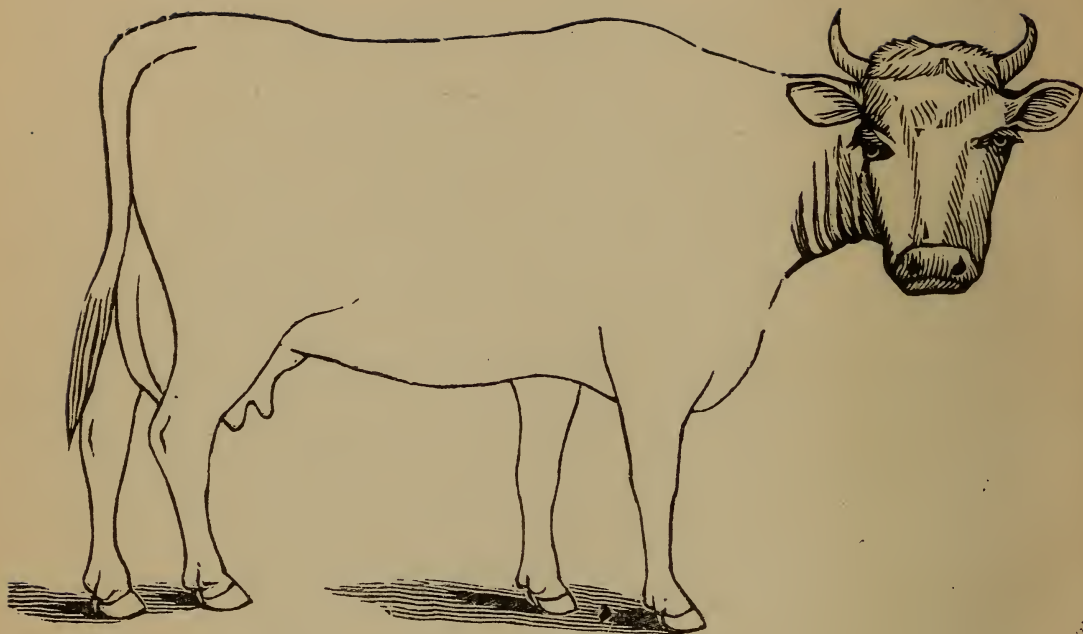


DESCRIPTION

Age

Defects

Brands

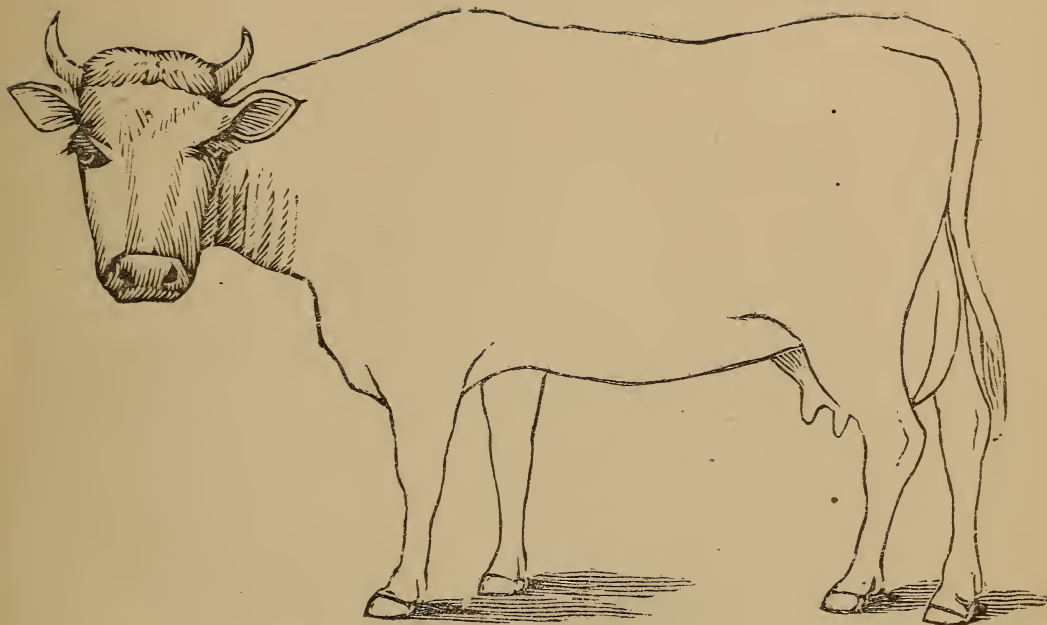


DESCRIPTION

Color.....

Marks.....

Weight.....

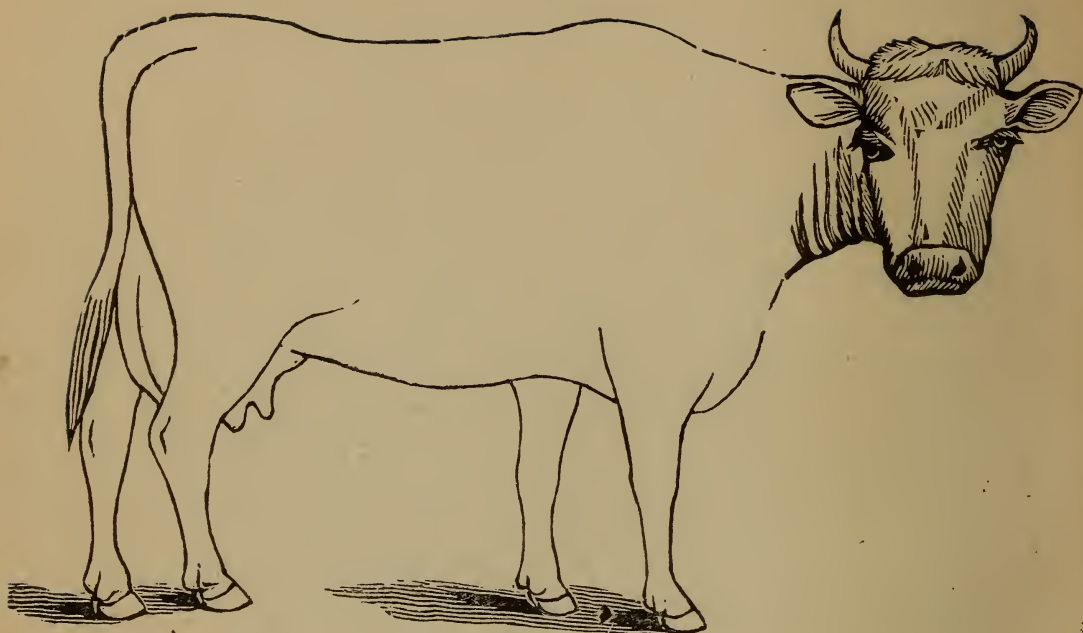


DESCRIPTION

Age

Defects

Brands

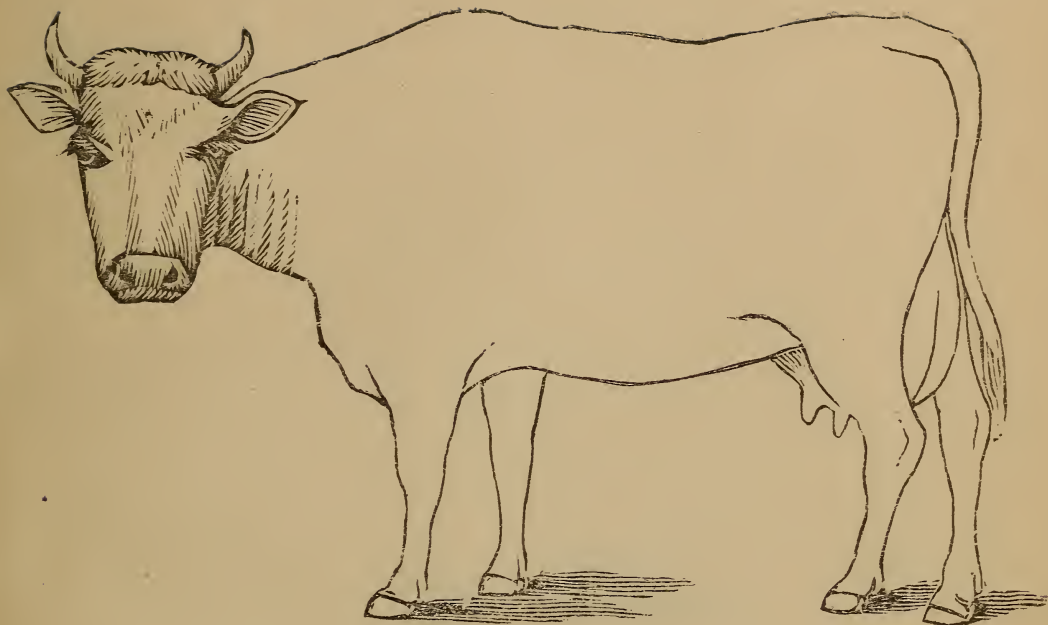


DESCRIPTION

Color.....

Marks.....

Weight.....

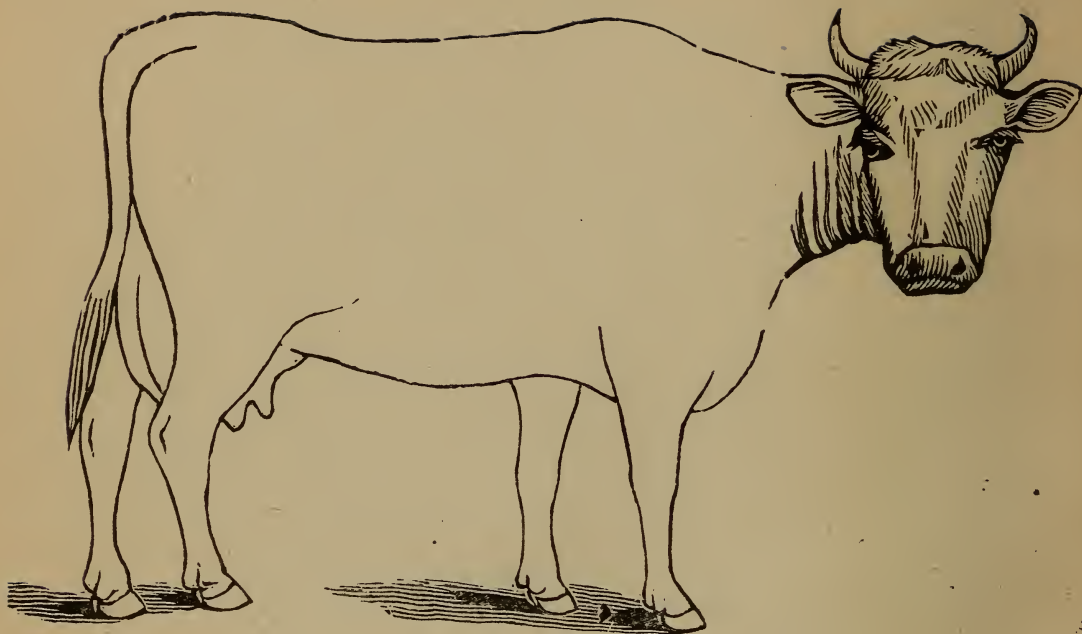


DESCRIPTION

Age

Defects

Brands

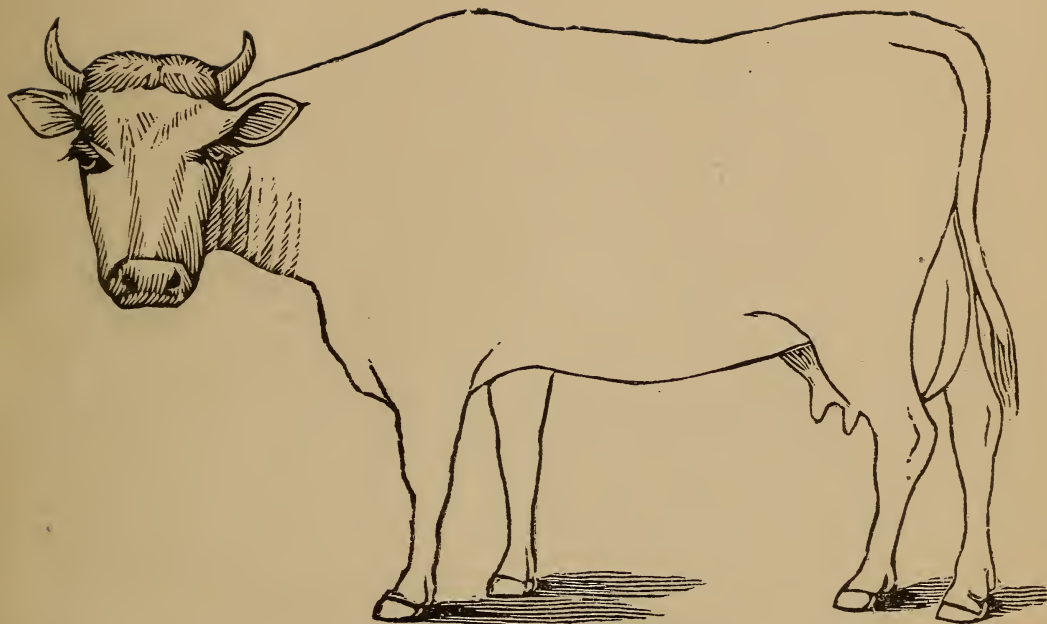


DESCRIPTION

Color.....

Marks.....

Weight.....

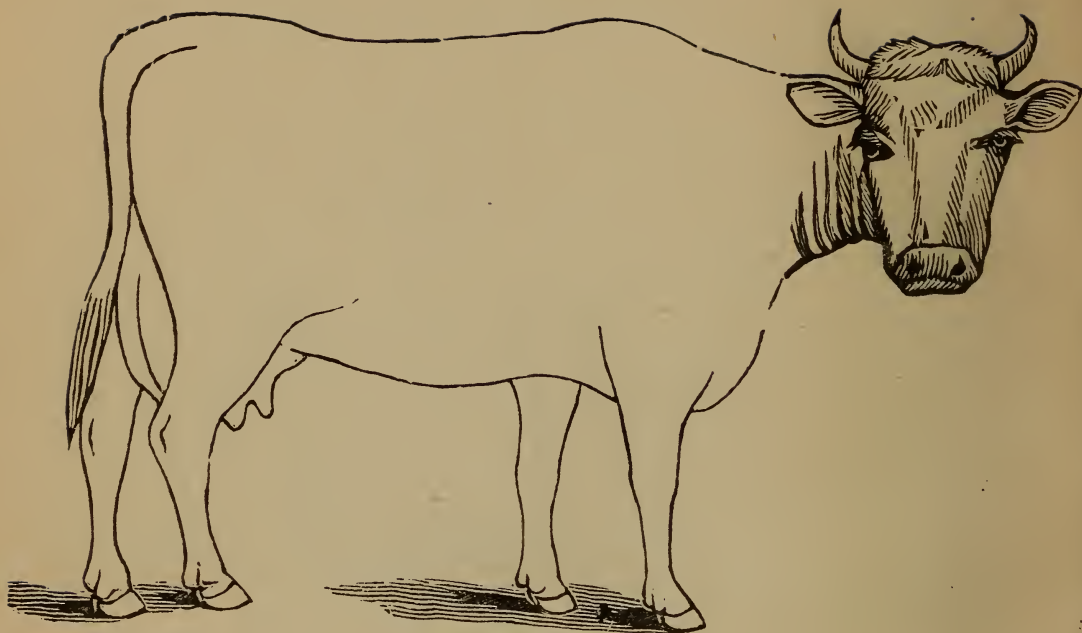


DESCRIPTION

Age..... ,

Defects

ds.....

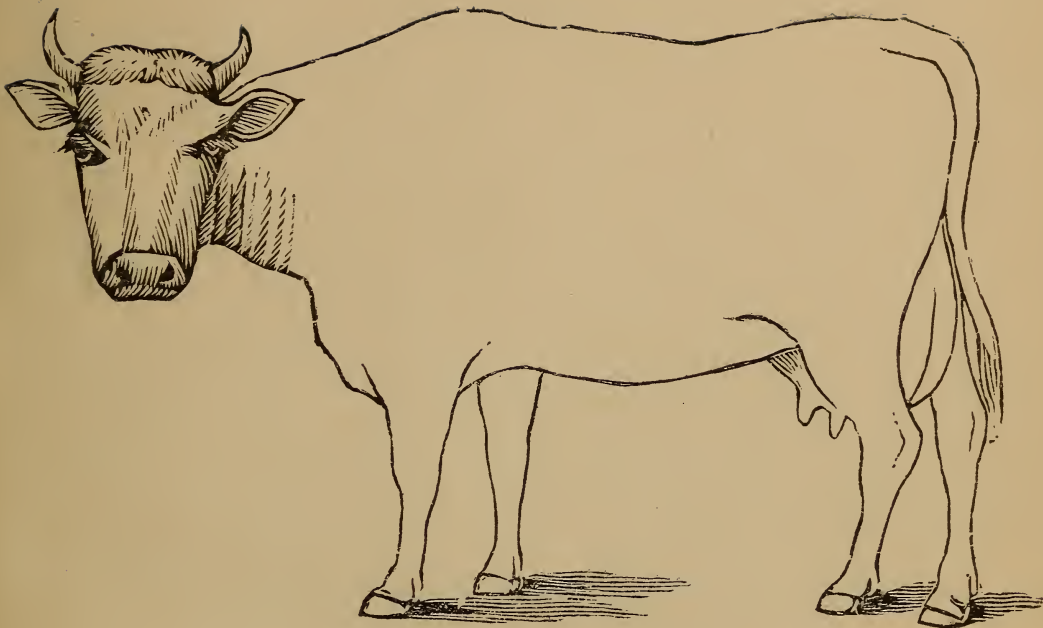


DESCRIPTION

Color.....

Marks.....

Weight.....

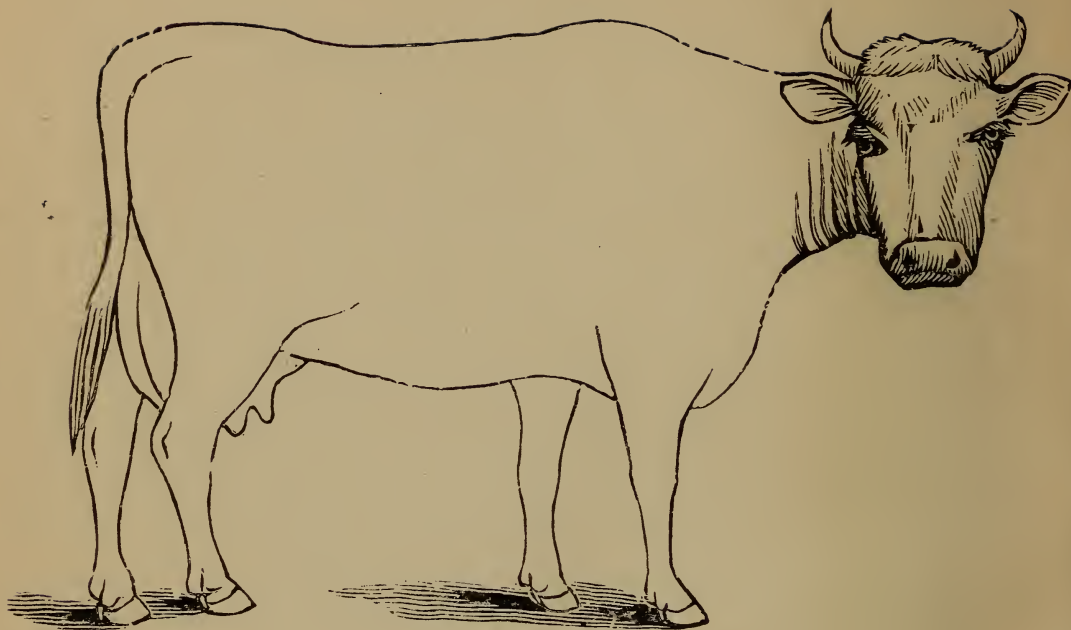


DESCRIPTION

Age

Defects

Brands

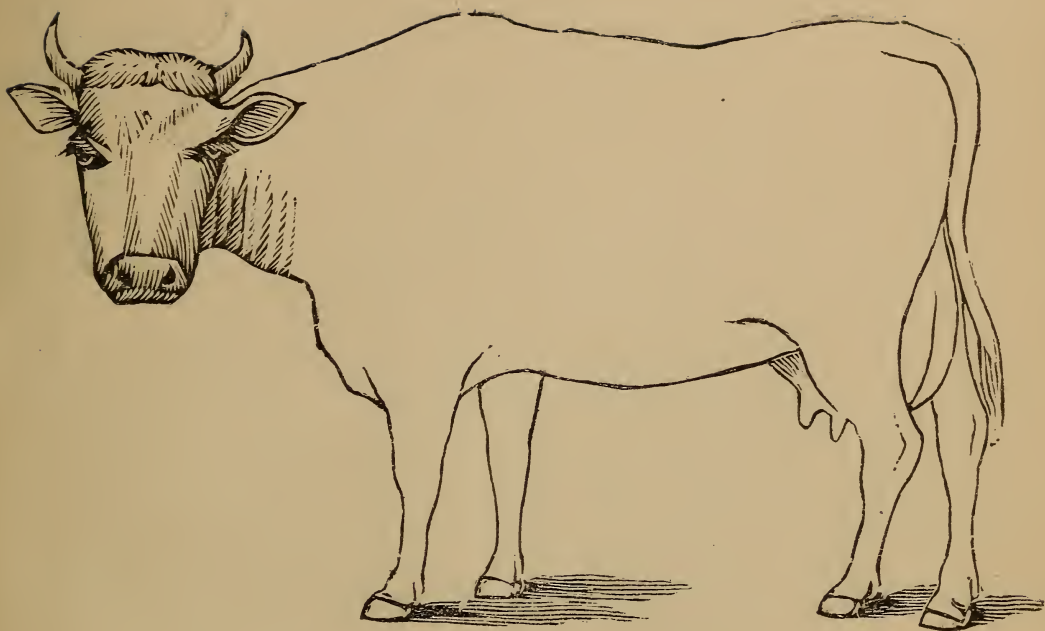


• DESCRIPTION

Color

Marks

Weight

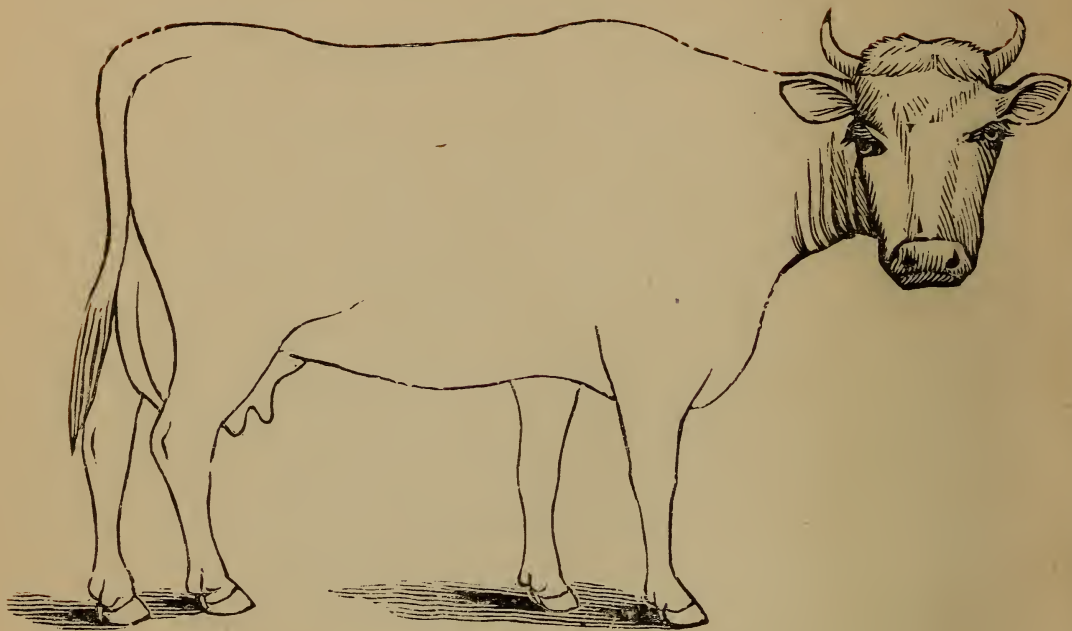


DESCRIPTION

Age

Defects

Brands

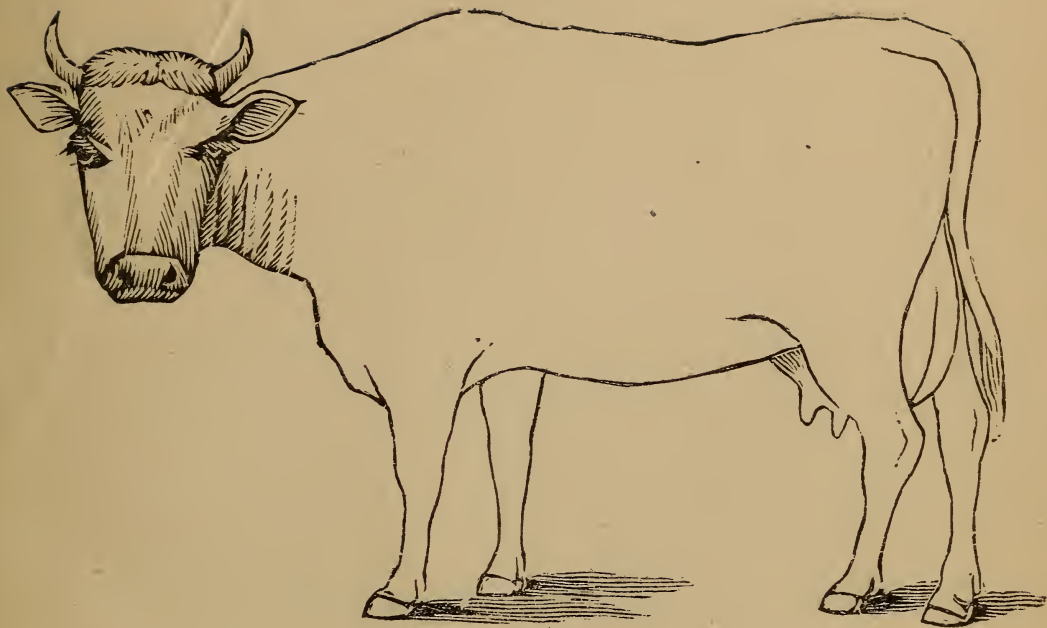


DESCRIPTION

Color

Marks

Weight

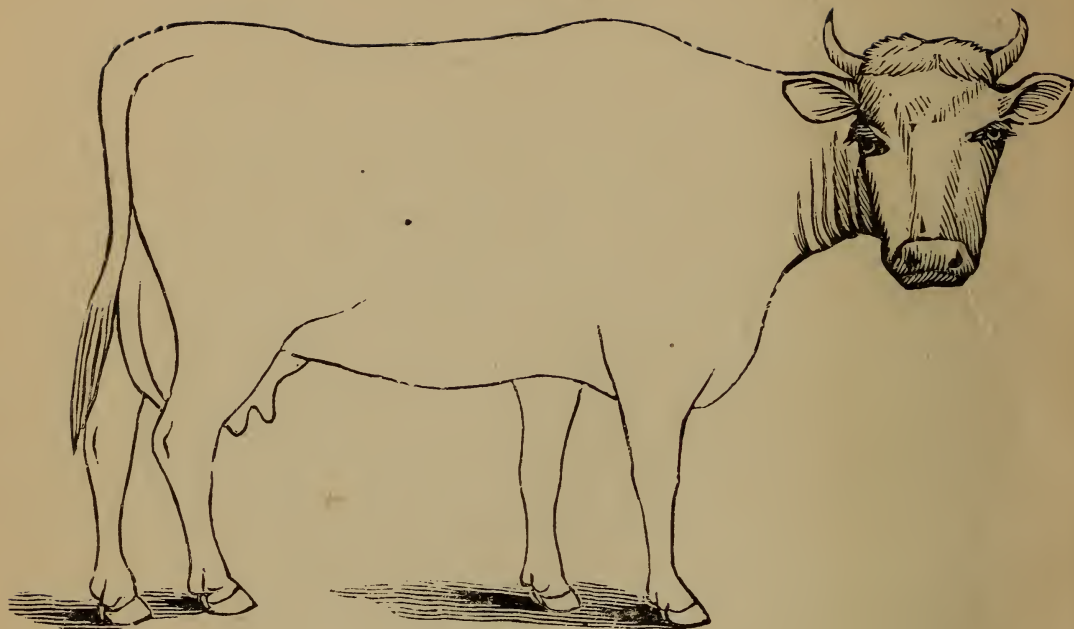


DESCRIPTION

Age

Defects

Brands

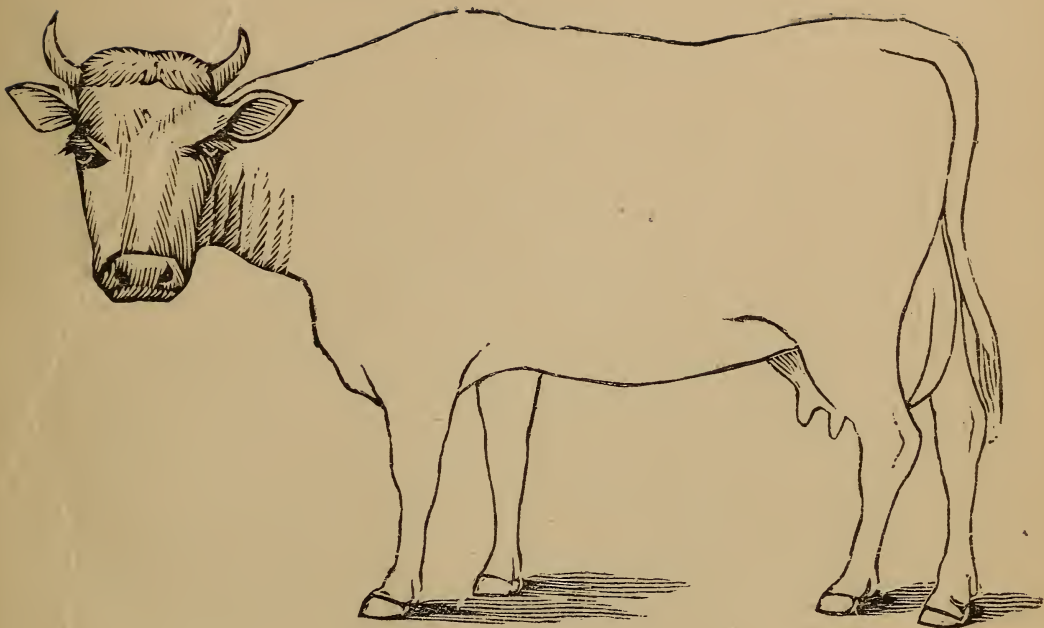


DESCRIPTION

Color

Marks

Weight

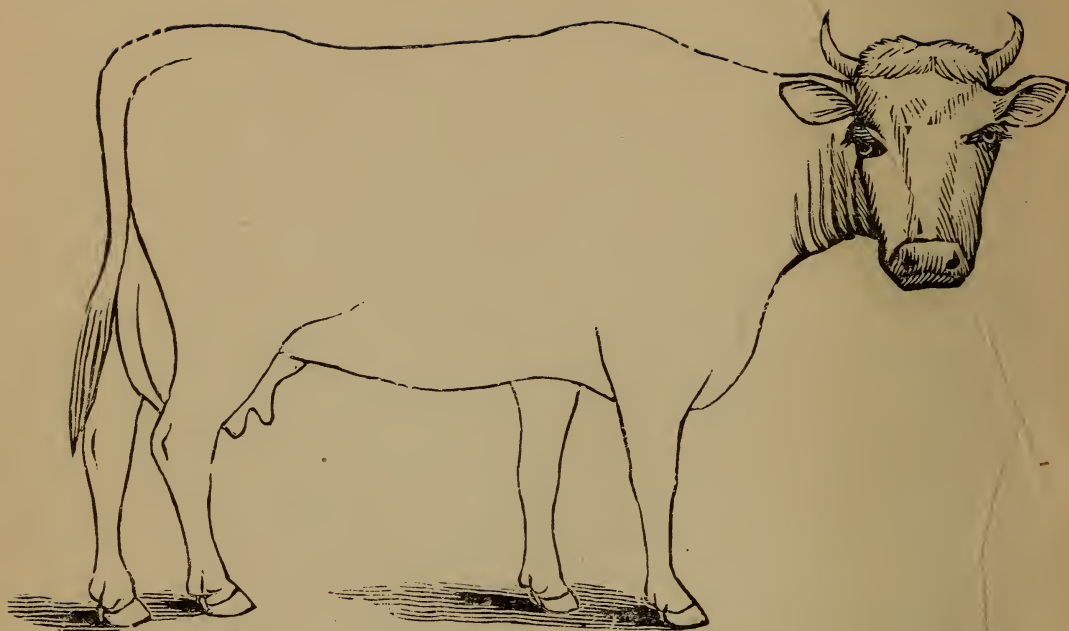


DESCRIPTION

Age

Defects

Brands

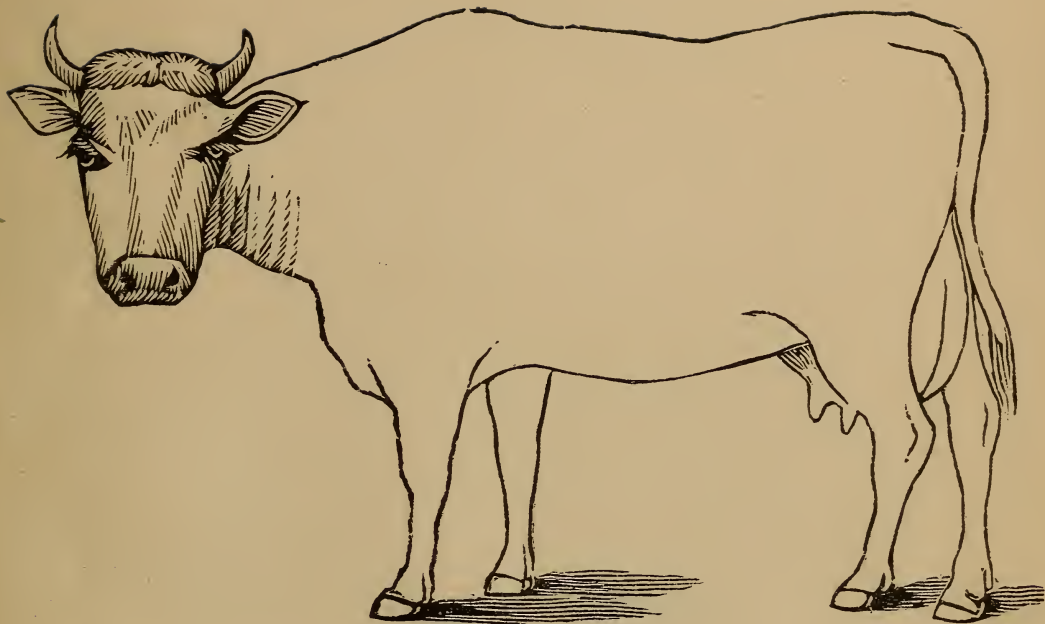


DESCRIPTION

Color

Marks

Weight

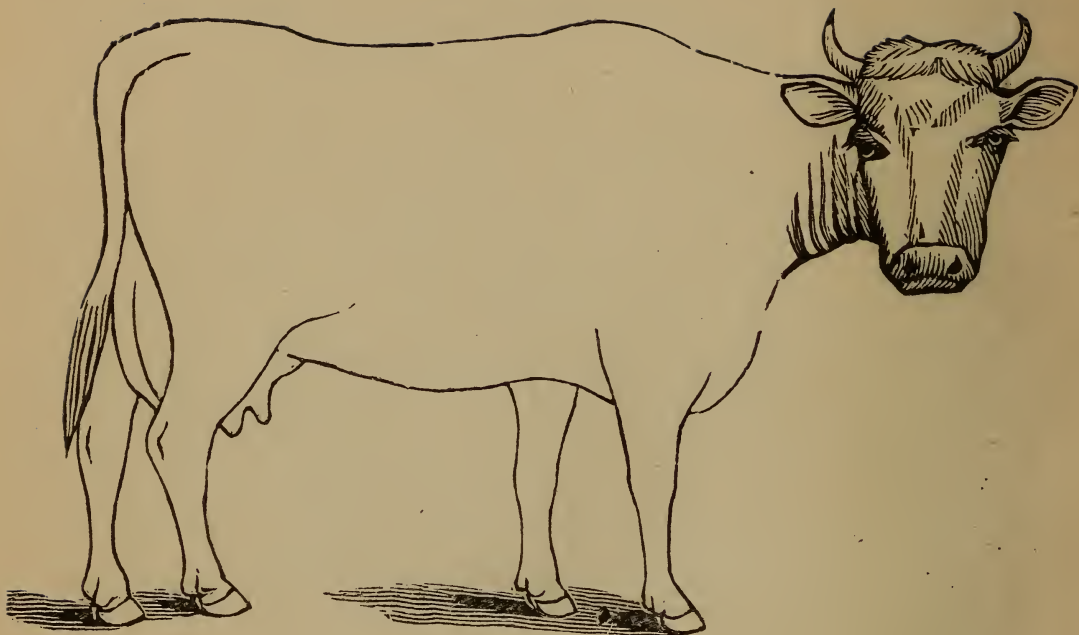


DESCRIPTION

Age.....

Defects

Brands.....

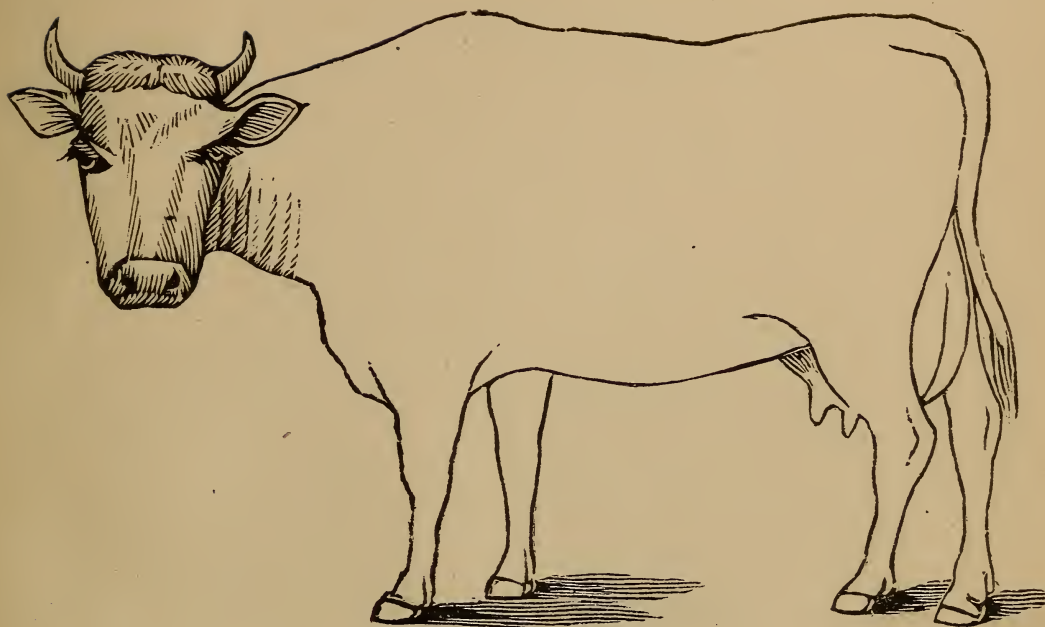


DESCRIPTION

Color.....

Marks.....

Weight.....

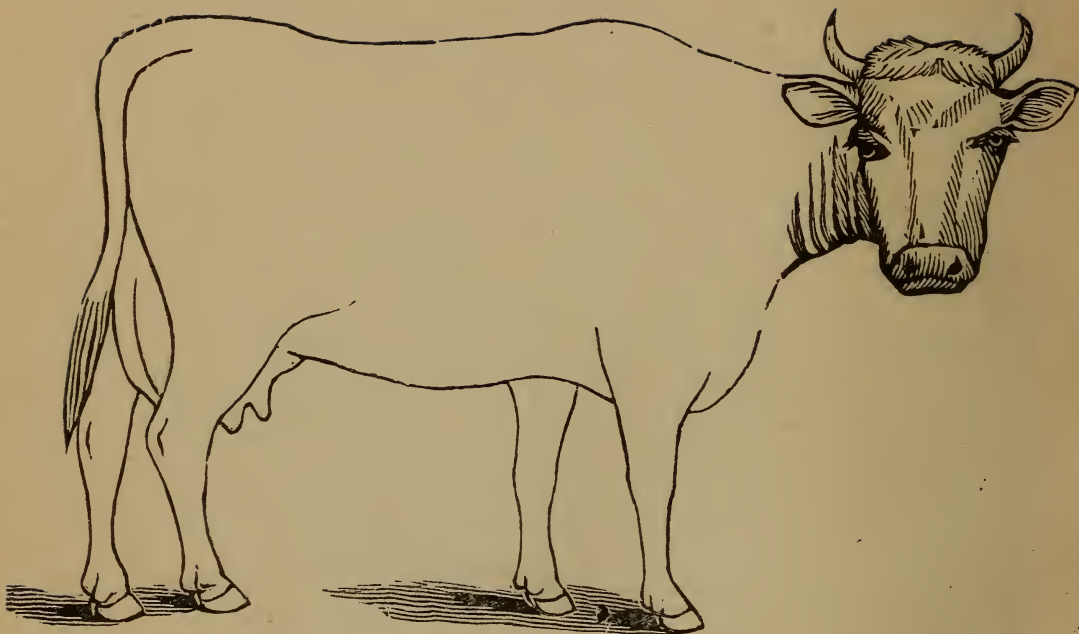


DESCRIPTION

Age.....

Defects

Brands.....

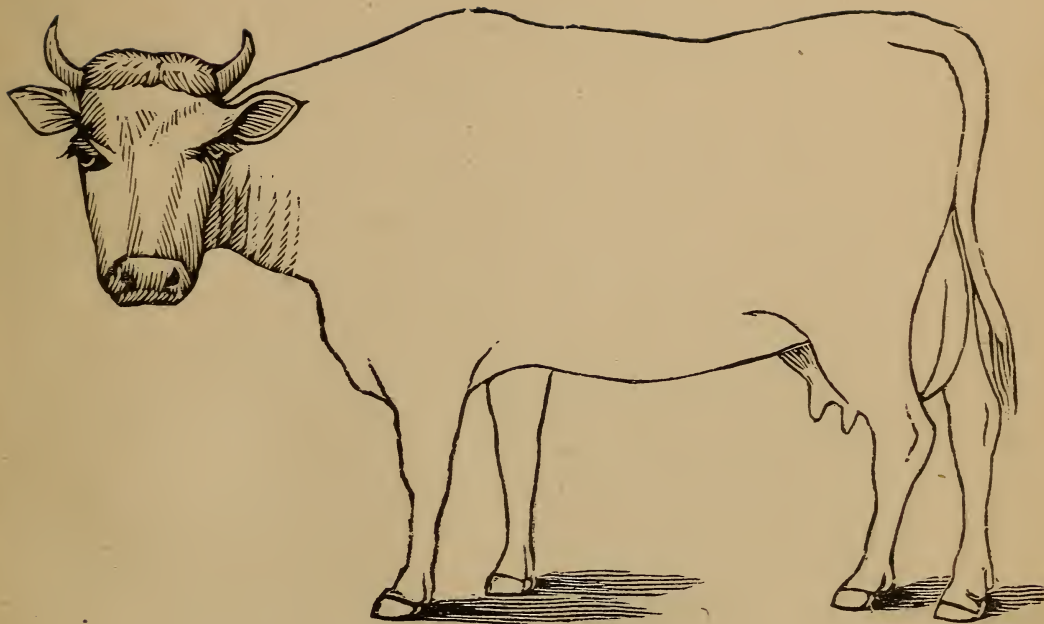


DESCRIPTION

Color.....

Marks.....

Weight.....

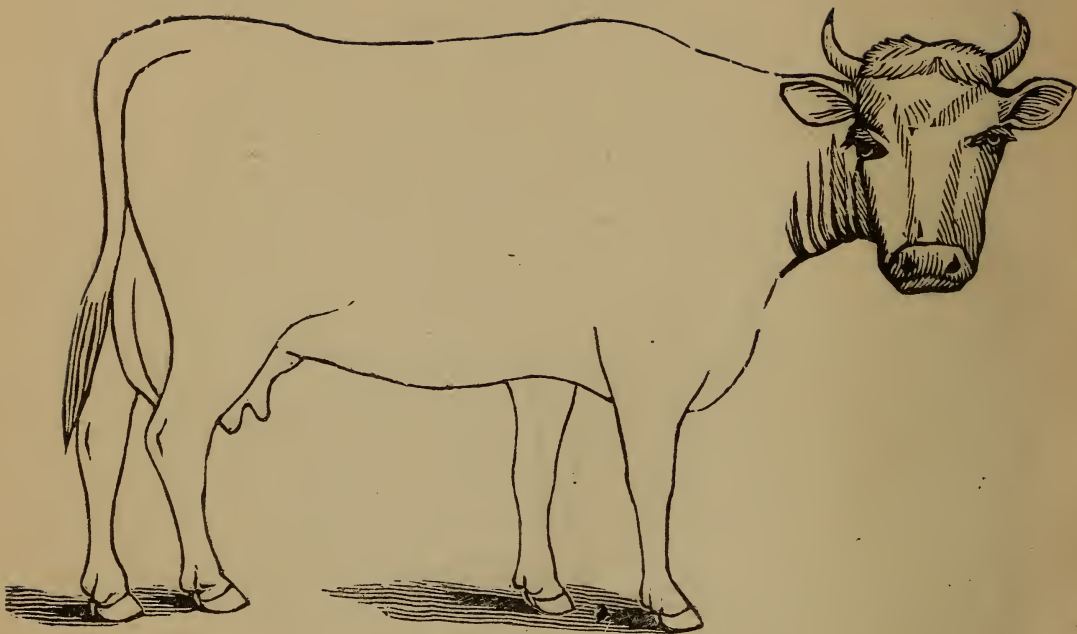


DESCRIPTION

Age.....

Defects

Brands.....

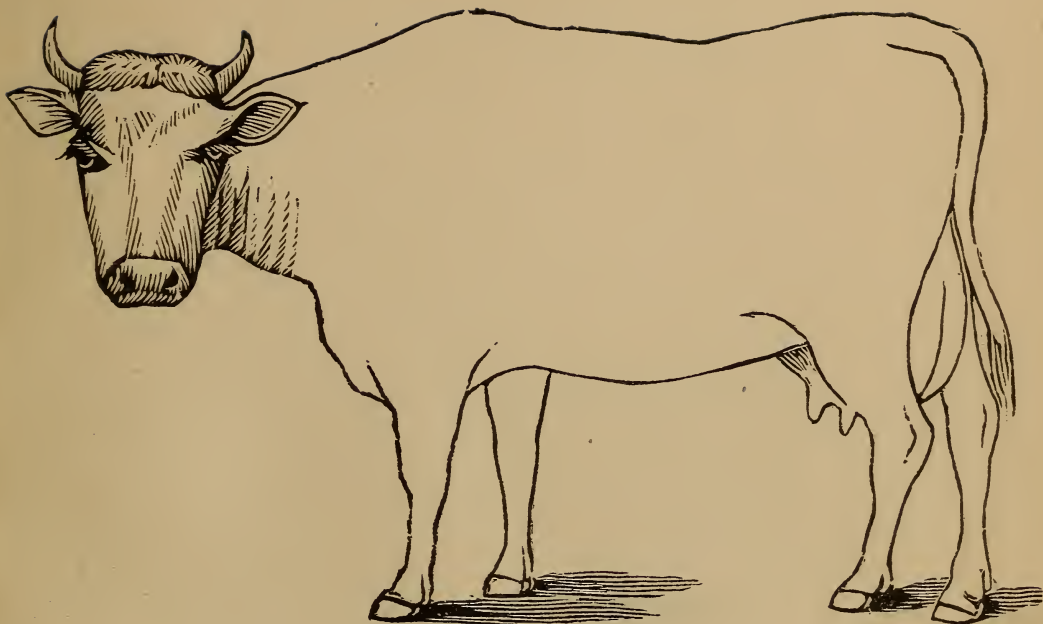


DESCRIPTION

Color.....

Marks.....

Weight.....

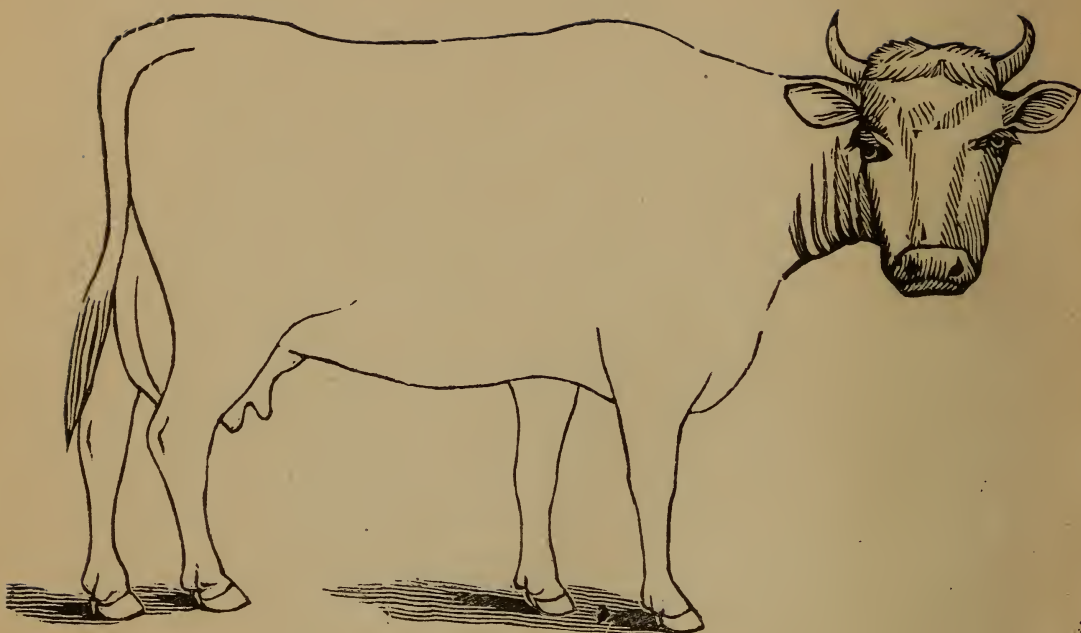


DESCRIPTION

Age.....

Defects

Brands.....

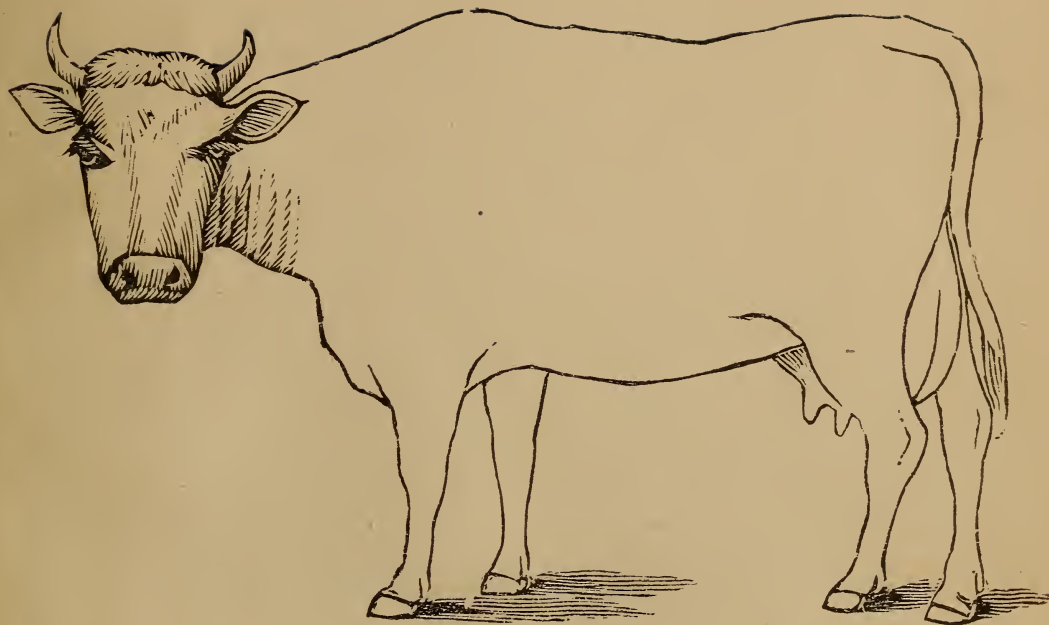


DESCRIPTION

Color.....

Marks.....

Weight.....



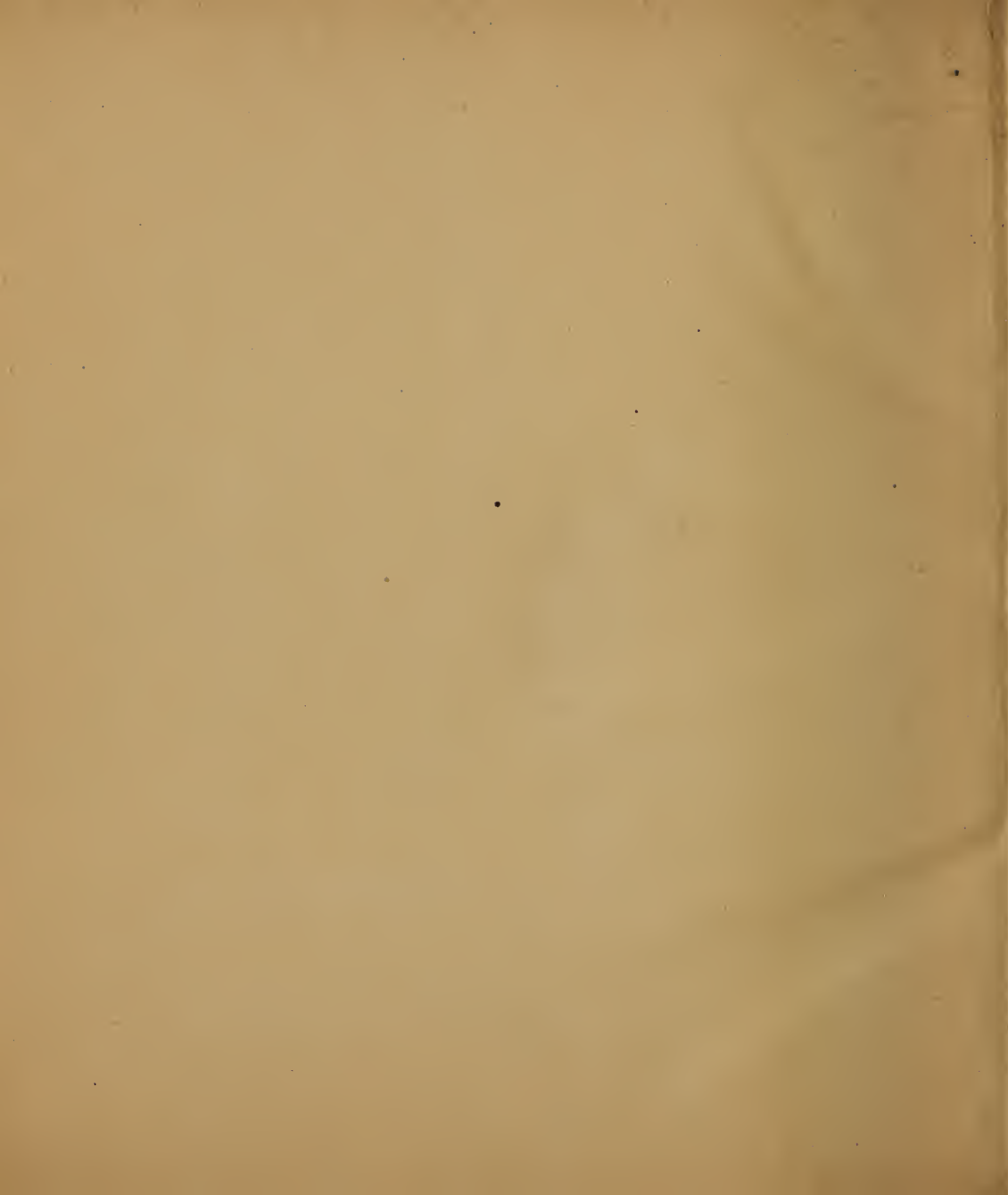
DESCRIPTION

Age

Defects

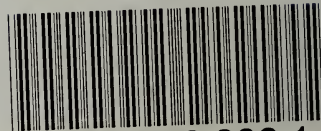
Brands







LIBRARY OF CONGRESS



0 002 830 806 1