

INSTRUCTIONS

and

PARTS LIST

for

RUGER.

“HAWKEYE”[®]

SINGLE-SHOT PISTOL



NOTE: This model out of production
— For reference use only.

STURM, RUGER & CO., INC.
SOUTHPORT, CONNECTICUT
U. S. A.

All orders for parts or servicing of this model should be sent to:

Sturm, Ruger & Company, Inc.

Service Department

200 West Street, Southport, NH 03773

(603)-863-3300

1/1.5/9-77

Reprinted with reference revisions: 6-81

GENERAL

The RUGER "Hawkeye" is a single-shot pistol, designed for use with high velocity small game cartridges of the .256 Winchester Magnum class. The single-shot mechanism of the "Hawkeye" was adapted because it utilizes more efficiently, than a revolver or automatic, the high velocity and inherent accuracy of these cartridges. The "Hawkeye" has also been designed to insure safety to the maximum possible degree. It will be noted that after falling to strike the firing pin, the hammer rebounds slightly to the rear, coming to rest at a position where it is entirely clear of the firing pin. In this rebounded position, the force of the mainspring is neutralized, and furthermore, when the trigger is released it serves to lock the hammer against movement toward the firing pin.

The breech may be opened and closed only when the hammer lies in its safe rebound position and the trigger is released. Conversely, it is impossible to open the breech if the hammer has been drawn back to the full cock position. This arrangement insures that the arm is in a safe condition while being reloaded, and, afterward until by the deliberate intent of the user, the hammer is drawn back to full cock. It is impossible to fire the gun unless the breech is properly closed.

The cartridge chamber of the "Hawkeye" is located in the rear-end of the barrel where the barrel is threaded into the frame. The breech block of the "Hawkeye" replaces the conventional cylinder of a revolver and is mounted on a base pin of the revolver type on which it may rotate through a short arc to open or close the breech. The hammer blow is transmitted to the primer of the cartridge by a firing pin which is located in the breech block and is of very nearly the same length. The breech block swings 50° from its firing position to its fully open position: this opening and closing movement is accomplished manually by the shooter.

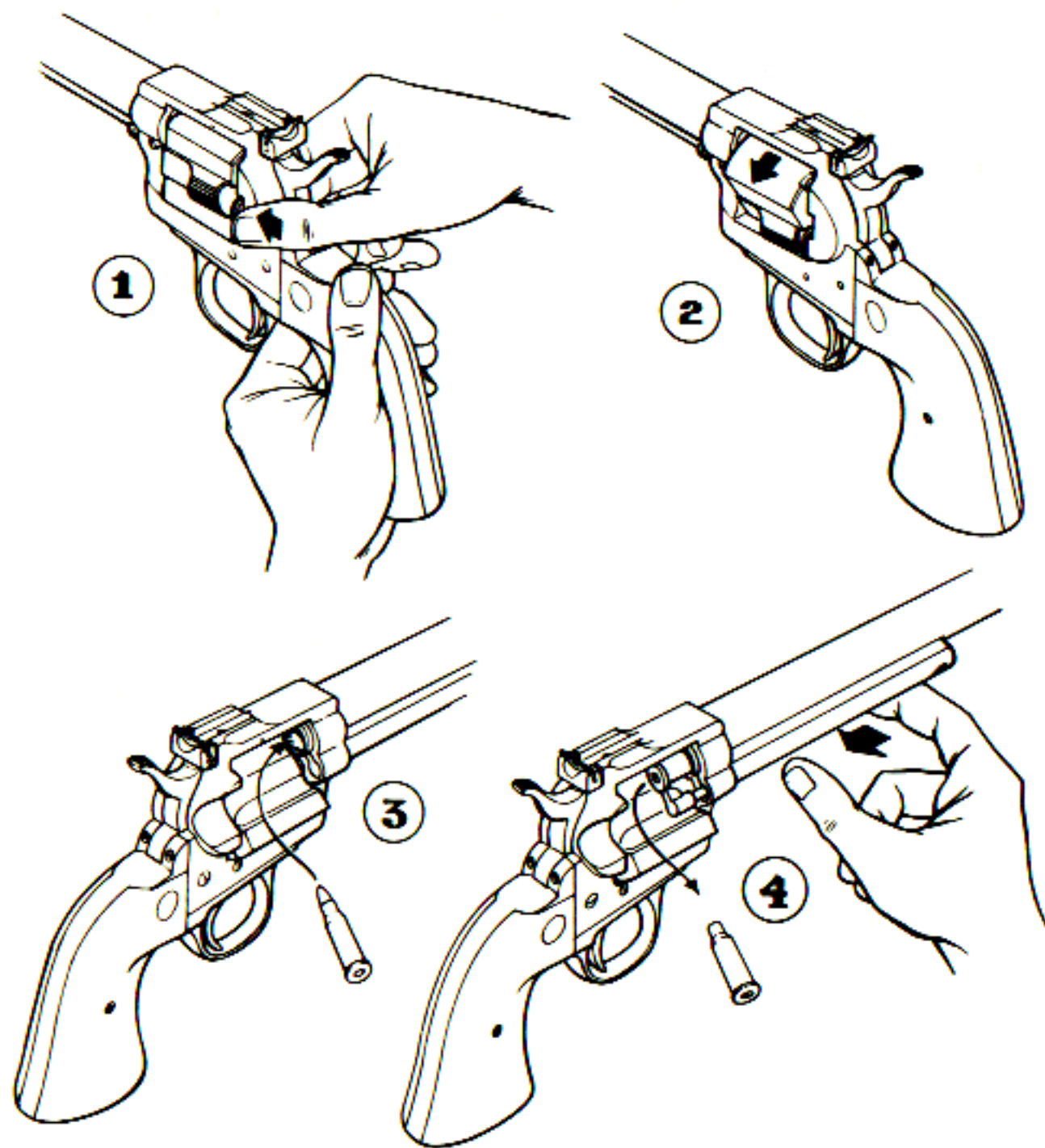
TO LOAD AND FIRE

1. With the hammer in its rebound position, press forward the breech block lock plunger, which is located on the left side of the breech block, and then as a continuation of this movement, press downward to rotate the breech block in a counter-clockwise direction (refer to fig. 1 & 2).
2. A cartridge may now be inserted into the chamber (as shown in fig. 3) or in the event that there is a fired cartridge case in the chamber, it may be extracted (as shown in fig. 4) by sliding rearwardly the ejector rod thumb-piece, which is located under the barrel.

After a cartridge has been inserted into the chamber and the breech block returned to its closed position, the arm is ready to fire upon cocking the hammer.

TO REMOVE BREECH BLOCK

1. Be sure gun is empty.
2. Hammer must be in rebound position.
3. Depress base pin latch and pull base pin out as far as possible toward muzzle.
4. Depress breech block lock plunger (See Fig. 1). Slowly rotate (Fig. 3) and slide breech block to left until breech block lock plunger clears side of frame. (CAUTION: Be sure to keep plunger covered with heel of left hand to avert escape of plunger and spring.) Remove plunger.
5. Continue to slowly rotate and slide breech block to the left until firing pin and firing pin spring clear side of frame. Breech block may now be completely removed. Note that the firing pin spring and the detent spring are kept in place in their respective holes by a slight enlargement of the inside end coils and care should be observed in removing these springs to avoid deformation. (Note: The same precaution should be observed in removal of the trigger spring.)



TO INSTALL BREECH BLOCK

1. Hold gun in right hand and depress breech block detent plunger with right index finger.
2. Hold breech block in left hand and insert block, from left side, far enough to right so as to engage detent plunger.
3. Insert and depress firing pin and spring.
4. Rotate block to right slightly so that frame retains firing pin.
5. Insert breech block lock plunger and spring.
6. Depress plunger and then further rotate the breech block into normal closed position.
7. Push base pin back into frame until it is re-engaged with base pin latch.

TO DISMANTLE INTERIOR PARTS

1. Be sure gun is empty.
2. Remove breech block, as outlined in Instructions above.
3. Remove grip panel screw and lift grip panels away from grip frame.
4. Bring hammer back to full cock position and insert any convenient nail or pin into the small hole at the lower end of the hammer strut; then press the trigger and permit the hammer to move to a forward position. (It will be observed that the pin which has been placed in the hammer strut hole serves to confine the mainspring.)
5. Remove 5 screws which fasten the grip frame to the cylinder frame. Remove grip frame.
6. Remove hammer pivot screw and hammer.
7. Remove trigger pivot screw and trigger.
8. To remove ejector and ejector rod: (A) Slide breech block base pin back into frame; (B) Remove ejector housing retaining screw and then move ejector housing forward toward muzzle; (C) With nail or small wire, push out pin retaining ejector rod head. Now slide off the rod head; (D) Slide off ejector rod spring; (E) Turn ejector rod so that ejector is free of frame and then slide ejector rod back, toward rear of frame, through hole in frame.

Reassembly follows in reverse procedure.

Note: Always use a good quality screw driver which properly fits the screw slots to avoid unsightly deformation of the screw heads.

ALTHOUGH THE FORGOING OUTLINES THE CORRECT PROCEDURE, WE WISH TO EMPHASIZE THAT SUCH DISMANTLING IS SELDOM IF EVER NECESSARY.

CARE AND CLEANING

The internal mechanism of the "Hawkeye" can be readily lubricated without disassembly. A few drops of oil may periodically be applied with an oil can around the various frame openings where the oil can work into the adjacent parts. The exterior of the gun should be wiped with an oil rag whenever it is to be laid away in order to protect the finish against rust.

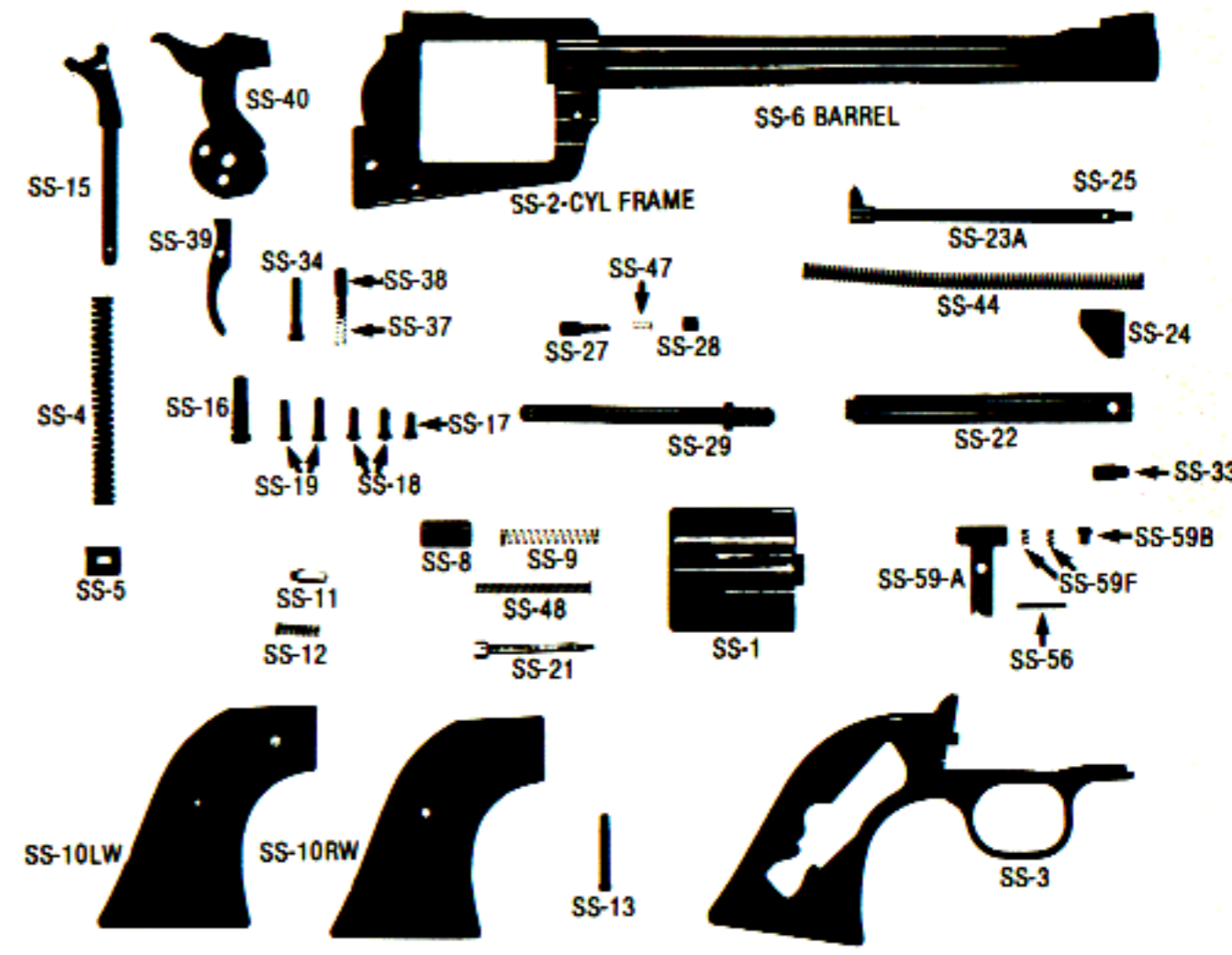
To clean the barrel and chamber it is only necessary to wipe the surfaces clean with an oily patch or with any reliable commercial product designed for this purpose.

HAWKEYE PARTS LIST

Parts No.	Description	Price
SS-6	*Barrel	\$ 8.00
SS-29	Base Pin	.75
SS-27	Base Pin Latch	.50
SS-47	Base Pin Latch Spring	.25
SS-28	Base Pin Latch Nut	.25
SS-1	*Breech Block	15.00
SS-8	Breech Block Lock Plunger	.75
SS-9	Breech Block Lock Plunger Spring	.25
SS-2	*Cylinder Frame	22.00
SS-11	Detent Plunger	.65
SS-12	Detent Plunger Spring	.25
SS-23A	Ejector Rod Assembly	2.50
SS-22	Ejector Housing	6.00
SS-33	Ejector Housing Screw	.25
SS-44	Ejector Spring	.25
SS-24	Ejector Thumb Piece	1.00
SS-25	Ejector Thumb Piece Ret. Pin	.25
SS-21	Firing Pin	2.00
SS-48	Firing Pin Spring	.50
SS-36	*Front Sight	2.00
SS-3	Grip Frame	12.00
SS-17	Grip Frame Screw (Front)	.25
SS-18	Grip Frame Screw (Rear)	.25
SS-19	Grip Frame Screw (Lower)	.25
SS-10LW	Grip Panel (Left) Walnut	3.00
SS-10RW	Grip Panel (Right) Walnut	3.00
SS-13	Grip Panel Screw	.25
SS-40	Hammer	7.50
SS-16	Hammer Pivot	.25
SS-15	Hammer Strut	.65
SS-4	Mainspring	.50
SS-5	Mainspring Seat	.25
SS-52	Medallion	.50
SS-34	Pivot Screw	.25
SS-35	Rear Sight (Including Elevation Screw and Spring) — Not Illus.	4.50
SS-59A	Rear Sight Body	3.00
SS-56	Rear Sight Pivot Pin	.25
SS-59B	Rear Sight Elevation Screw	.25
SS-59F	Rear Sight Spring	.25
SS-59E	Rear Sight Blade (Not Illus.)	.50
SS-39	Trigger	2.50
SS-37	Trigger Spring	.25
SS-38	Trigger Spring Plunger	.25

*PARTS MUST BE INSTALLED AT FACTORY

IMPORTANT NOTICE—
 The prices shown DO NOT APPLY. They are listed for historical reference only. Parts numbered 1,2,3,4,5,6,8,9,11,12,15,21,23A,24,25,37,38,39 and 40 ARE NOT AVAILABLE. The other numbered parts are available because they are the same as parts used in other Ruger models. Write to us for prices on these available parts. **HAWKEYE PISTOLS ARE NOT AVAILABLE.**



SERVICE

Every RUGER "Hawkeye" is proof-tested and function-fired in order to prove that it is in perfect condition and conforms fully to our specifications and standards before shipment.

If there is any question with regard to the performance of the gun, please write to our Service Department, fully describing all circumstances and conditions involved. If you should return your RUGER "Hawkeye" for repair, or if you order component parts, please comply with the following suggestions for prompt service:

1. Please enclose remittance with order.
2. Guns shipped to the factory should be sent prepaid. We will NOT accept collect shipments.
3. Always give serial number and model of firearm. Give detailed information covering difficulty or work desired. Give name of shipper, if other than correspondent. Be sure to order parts by name and number.
4. WE CANNOT ACCEPT ORDERS AT THE FACTORY FOR LESS THAN \$1.00
5. Except for guns still in warranty, any work performed will bear a minimum labor charge of \$3.00 net. The charge for re-bluing is \$12.00.

Specifications subject to change at our discretion without notice.

THE PRICES ABOVE DO NOT APPLY — Reference Only.

SALE PRICE
\$ 3 00