

MAC



M10 - M11

**MAC
SUBMACHINE
GUN**



OPERATING MANUAL

No. 1

MILITARY ARMAMENT CORP.

MARIETTA GA. 30062 U.S.A.

OPERATION AND MAINTENANCE MANUAL



MILITARY ARMAMENT CORPORATION

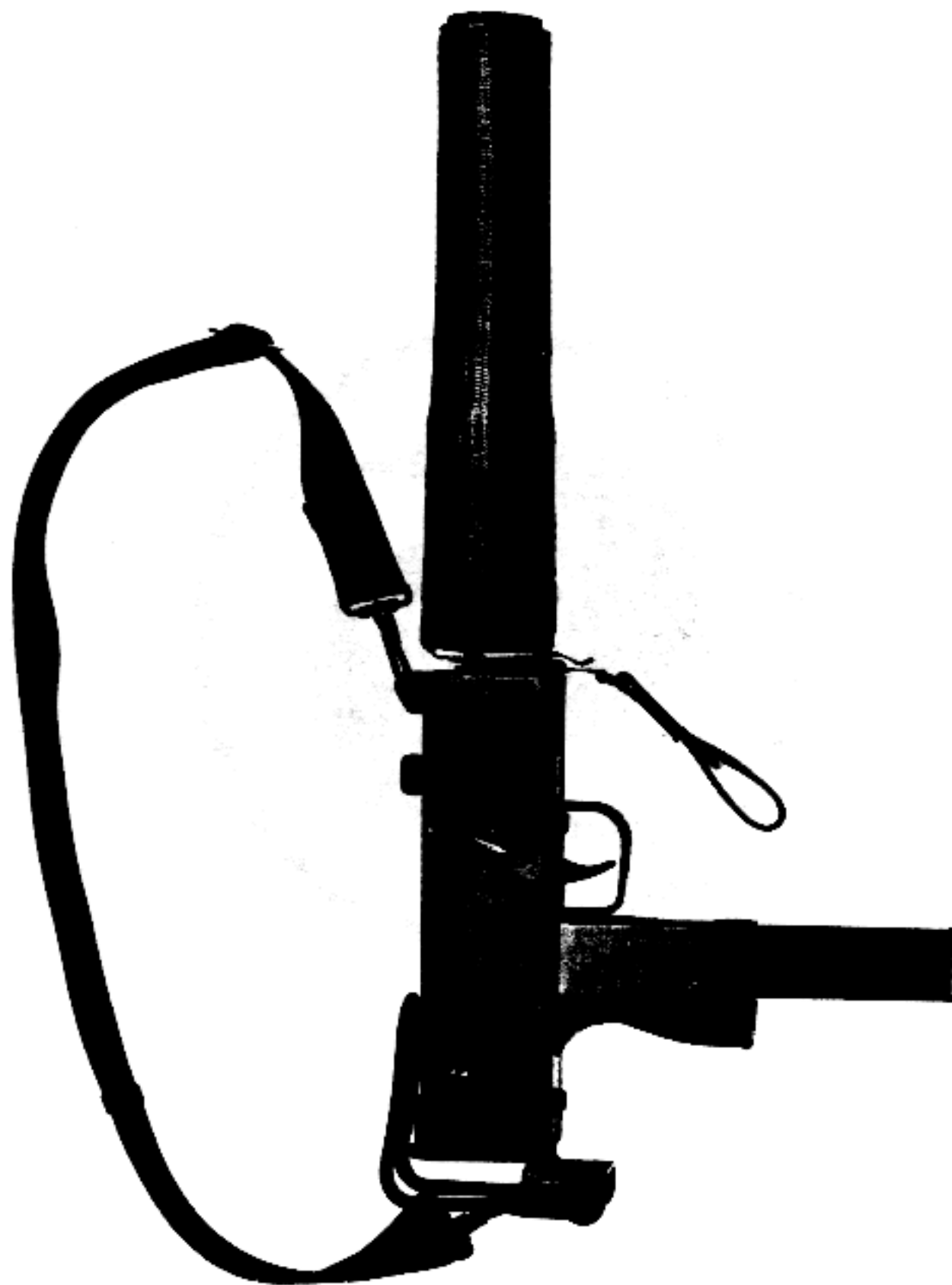


TABLE OF CONTENTS

Foreward

| | |
|---|----|
| 1. Introduction | 1 |
| A. Technical Specifications | |
| 2. Construction | 4 |
| 3. Operation of the Weapon | 5 |
| A. Loading Magazines | |
| B. Stock Assembly | |
| C. Loading and Cocking the Weapon | |
| D. Charging the Weapon | |
| E. Inserting the Magazine | |
| F. Placing the Weapon on "Safe" | |
| G. Removal of Magazine | |
| H. Fire Selector Lever Operation | |
| I. Firing the Submachine Gun | |
| J. Malfunctions | |
| 4. Stripping and Reassembling | 12 |
| A. Field Stripping | |
| 1) Removing Upper Receiver | |
| 2) Removing the Bolt | |
| 3) Removing the Stock | |
| B. Trigger Mechanism | |
| C. Extractor | |
| D. Recoil Spring | |
| E. Receiver Pin Catch | |
| F. Magazine Catch | |
| G. Safety Catch | |
| H. Stock Latch | |
| I. Magazine | |
| 5. Reassembly | 15 |
| 6. Cleaning and Maintenance | 15 |
| Illustrated Parts List | 17 |

FOREWORD

This manual is published for the information and guidance of personnel whose duties involve the use, maintenance and repair of the M10 SMG and the M11 SMG. Disassembly, assembly, cleaning and minor repairs may be undertaken in the field.

In all cases where the nature of the repair or adjustment is beyond the scope of facilities of the unit, the Manufacturer should be informed in order that trained personnel with suitable tools and equipment may be provided.

1. INTRODUCTION

The MAC Model 10 and Model 11 represent a significant breakthrough in compact submachine gun design. The M10 is available in 9MM Para and .45 ACP calibers, the M11 in .380 ACP caliber.

Both Models are light in weight, of durable steel construction and are easy to fire, either in semi or full automatic mode.

The compact size of the MAC submachine guns makes them especially suitable for tank crew, gun and mortar crews, etc. and their selective fire capability makes them an excellent weapon for police use.

The addition of a noise suppressor further enhances the performance, reducing the noise and eliminating muzzle flash.

The weapon operates on the straight blowback principle and is magazine fed.

A

TECHNICAL SPECIFICATIONS

| | Model 10 .45 ACP | | Model 10 9MM Para. | | Model 11 .380 ACP | |
|--|---------------------|-----|-----------------------|-----|----------------------|-----|
| | Inches | MM | Inches | MM | Inches | MM |
| GUN DIMENSIONS WITHOUT SUPPRESSOR | | | | | | |
| Length without stock | 10.50 | 267 | 10.50 | 267 | 8.75 | 222 |
| Length stock telescoped | 11.60 | 295 | 11.60 | 295 | 9.81 | 249 |
| Length stock extended | 21.57 | 548 | 21.57 | 548 | 18.11 | 460 |
| Barrel length | 5.75 | 146 | 5.75 | 146 | 5.06 | 129 |
| Maximum width | 1.96 | 50 | 1.96 | 50 | 1.36 | 35 |
| GUN DIMENSIONS WITH SUPPRESSOR ATTACHED | | | | | | |
| Length without stock | 20.35 | 517 | 20.35 | 517 | 16.25 | 413 |
| Length stock telescoped | 21.45 | 545 | 21.45 | 545 | 17.31 | 440 |
| Length stock extended | 31.42 | 798 | 31.42 | 798 | 25.61 | 650 |
| Maximum width | 2.13 | 54 | 2.13 | 54 | 1.75 | 44 |
| SUPPRESSOR DIMENSIONS | | | | | | |
| Length | 11.44 | 291 | 11.44 | 291 | 8.81 | 224 |
| Diameter | 2.13 | 54 | 2.13 | 54 | 1.75 | 44 |

A. TECHNICAL SPECIFICATIONS

| WEIGHT AND CAPACITY | Lbs | Kg | Lbs | Kg | Lbs | Kg |
|--|-------|-------|-------|-------|-------|--|
| Gun without magazine | 6.25 | 2.81 | 6.25 | 2.81 | 3.50 | 1.57 |
| Suppressor | 1.20 | 0.54 | 1.20 | 0.54 | 1.00 | 0.45 |
| Loaded 16 round magazine | | | | | 0.62 | 0.27 |
| Loaded 30 round magazine | 2.15 | 0.97 | | | | |
| Loaded 32 round magazine | | | 1.37 | 0.61 | 1.12 | 0.54 |
| TYPE OF FIRE | | | | | | Semi-automatic or full automatic |
| CYCLIC RATE OF FIRE, M10/45 ACP | | | | | | Minimum 950 rounds per minute |
| M10/9MM Para. | | | | | | Minimum 950 rounds per minute |
| M11 .380 ACP | | | | | | Minimum 1200 rounds per minute |
| FRONT SIGHT | | | | | | Protected post |
| REAR SIGHT, M10 | | | | | | Fixed aperture for 100 meters |
| M11 | | | | | | Fixed aperture for 50 meters |
| SAFETIES | | | | | | Manually operated safeties for locking bolt in open or closed position |

2. CONSTRUCTION

The weapon consists of the following major components:

Barrel, Receiver, Bolt, Frame, Firing Mechanism, Magazine, and Extendable Stock

A sling swivel is attached to the barrel and receiver assembly. The front end of the barrel is threaded to accept a suppressor. The receiver is fitted with a fixed front sight and houses the bolt, recoil spring, buffer and ejector rod. The frame carries the receiver group, trigger mechanism, magazine housing, stock guide, and safety assembly.

The trigger mechanisms consist of sear, sear spring, selector lever, retainer, trip, trigger, trigger pin, trigger spring, and disconnecter.

The stock is designed to telescope into the frame when not in use thereby reducing the overall size of the weapon.

The bolt assembly on the Model 10 and Model 11 is fitted with a cocking handles. Both models have fixed firing pins. The extractor on the Model 10 operates on the leaf spring principle while the Model 11 utilizes a compression spring.

The magazine for the Model 10 .45 ACP and Model 11 .380 ACP caliber are both of the double column single position feed type, while the Model 10/9MM Para caliber is of the double column two position feed type.

3. OPERATION OF THE WEAPON

A. Loading Magazines

9MM Para - 32 rounds capacity

Hold the magazine in one hand, insert the cartridge, one at a time through the mouth of the magazine ensuring that the base of each cartridge is against the rear of the magazine. (See Fig. 1)

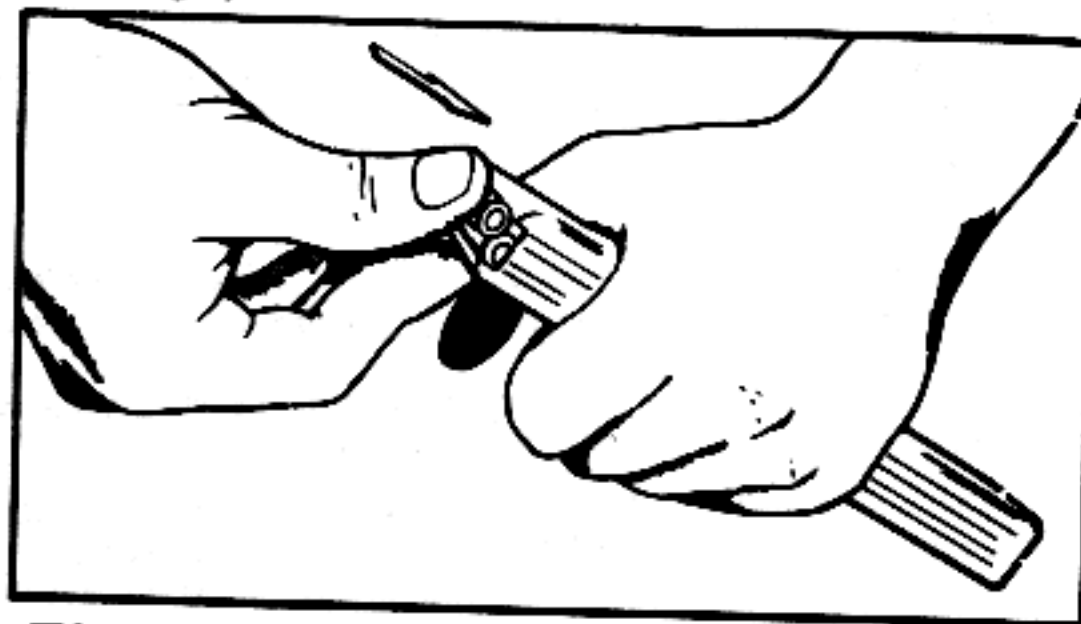


FIG. 1 Pushing Cartridge Under Magazine Feed Lips

LOADING MAGAZINES

.45 ACP - 30 Rds. Capacity

.380 ACP - 32 Rds. Capacity

Place the magazine loader on top of the magazine, then place the base of the magazine on a firm surface. Push down on the loader to depress the magazine follower. Insert a cartridge, base first, into the magazine. Lift the loader, and push the cartridge all the way into the magazine. Push down on the loader, depressing the cartridge and magazine follower. Repeat the operation (Fig. 2) until the magazine is full.

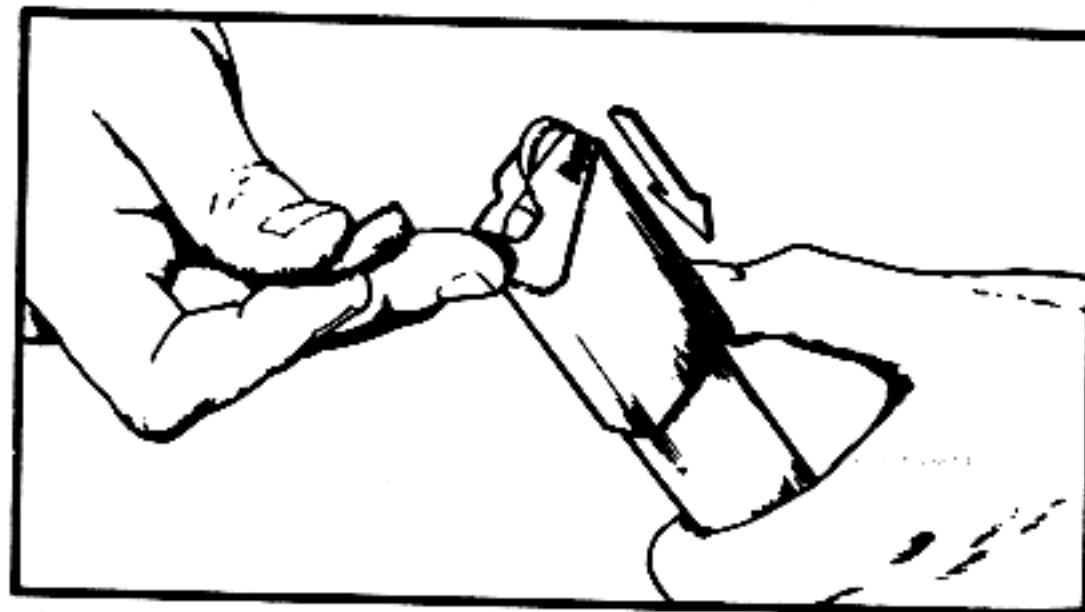


FIG. 2 Pull Down On Loader, Insert Cartridge

B. Stock Assembly

Hold weapon in left hand with right hand press inwards on right side of wire form butt near the pivot to allow wire form stock to rotate clockwise to normal firing position. (See Fig. 3)

Still holding weapon in left hand depress stock latch button and extend stock assembly using right hand. (See Fig. 4)

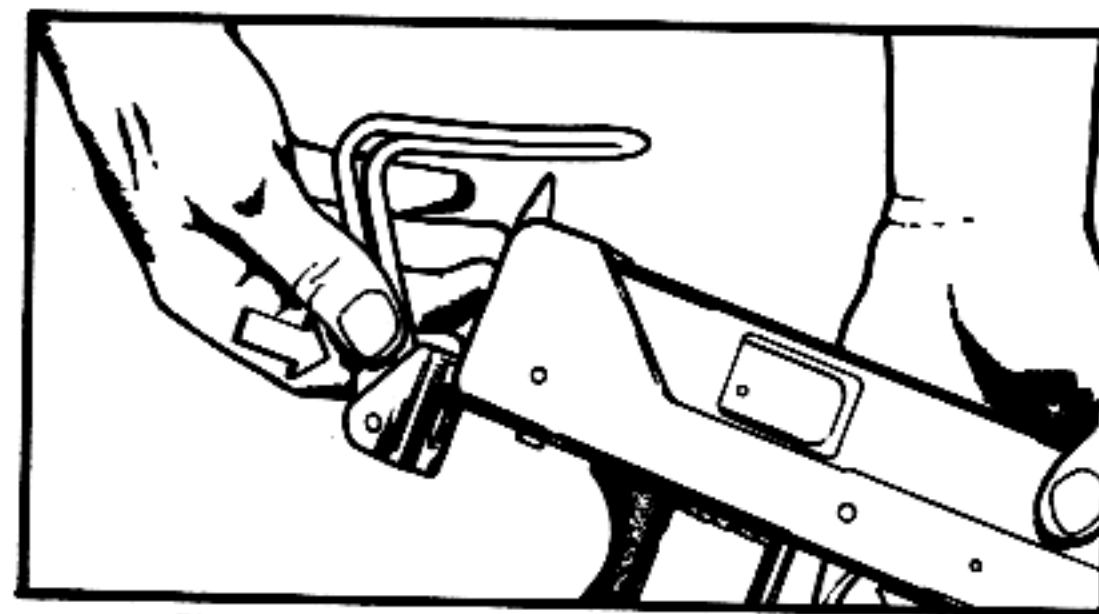


FIG. 3 Disengaging Wire Form from Retaining Pin

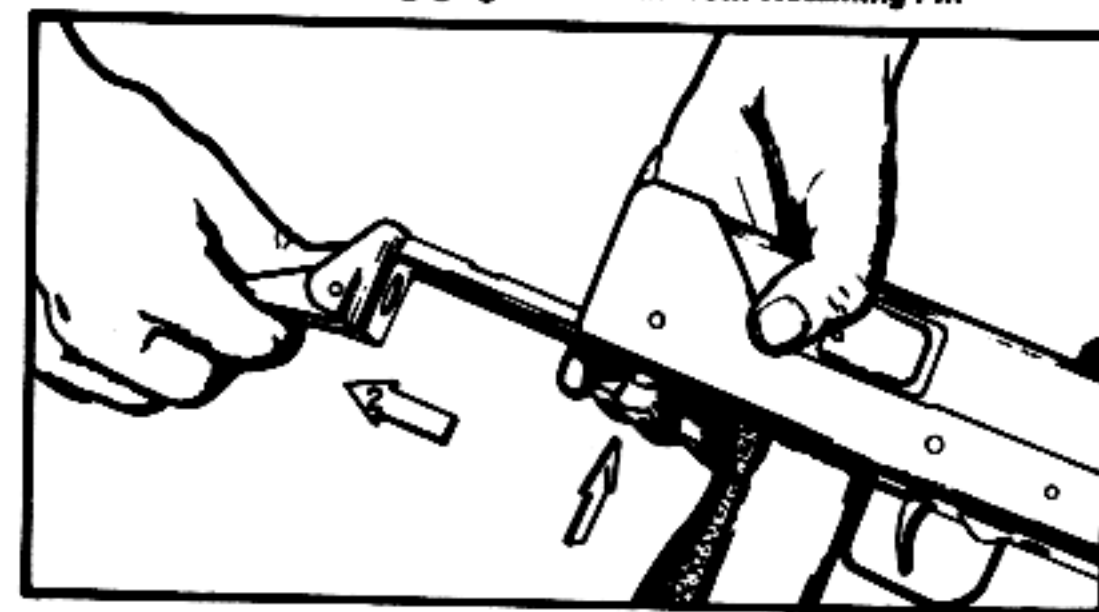


FIG. 4 Extending Stock Assembly

C. Loading and Cocking the Weapon

Move frame safety lever to 'fire' position. Holding the gun by the pistol grip in the right hand and keeping the index finger outside the trigger guard pull back on the cocking handle to the rear with the left hand until the bolt is held to the rear by the sear. (See Fig. 5) Move safety lever to 'safe' position.

Insert loaded magazine in its housing until the magazine catch engages magazine. (See Fig. 6) Select 'semi' or 'auto' fire as required, move frame safety to 'fire' position.

The gun is now ready to fire.

D. Charging the Weapon

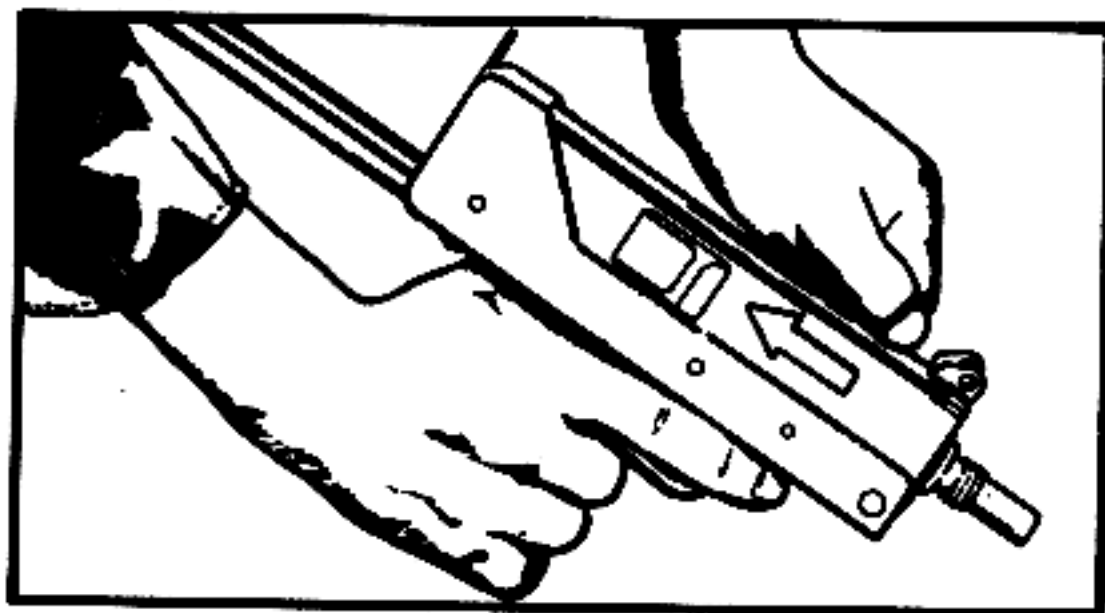


FIG. 5

E. Inserting the Magazine

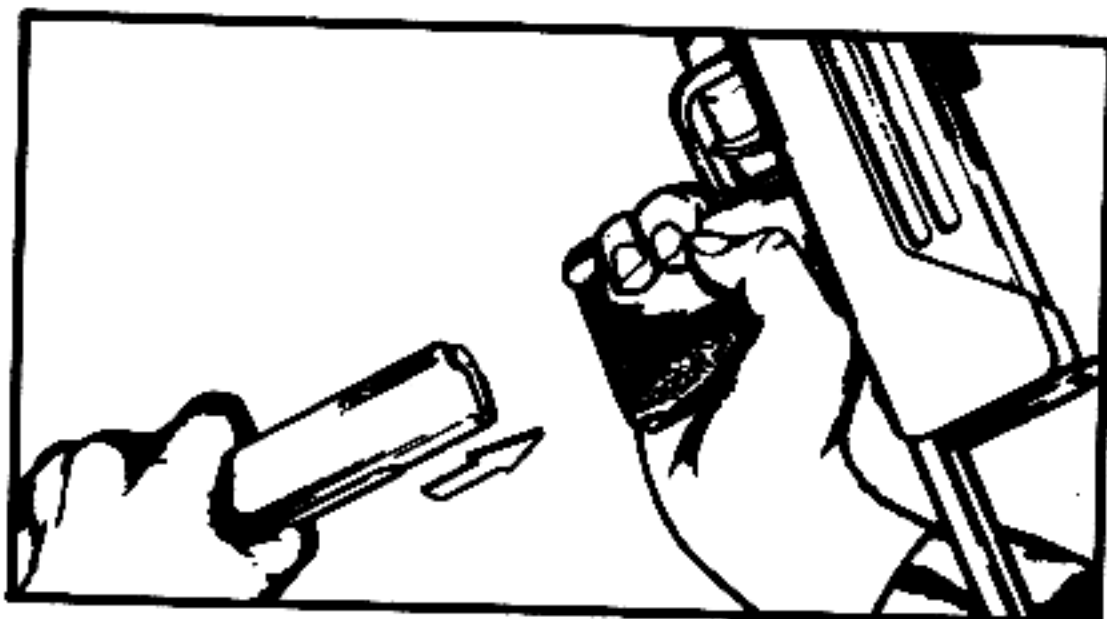


FIG. 6

F. Placing the Weapon on "Safe"

The safety is located on the right of the underside of the frame, it moves front to back, front is the 'fire' position and back is the 'safe' position. (See Fig. 7)

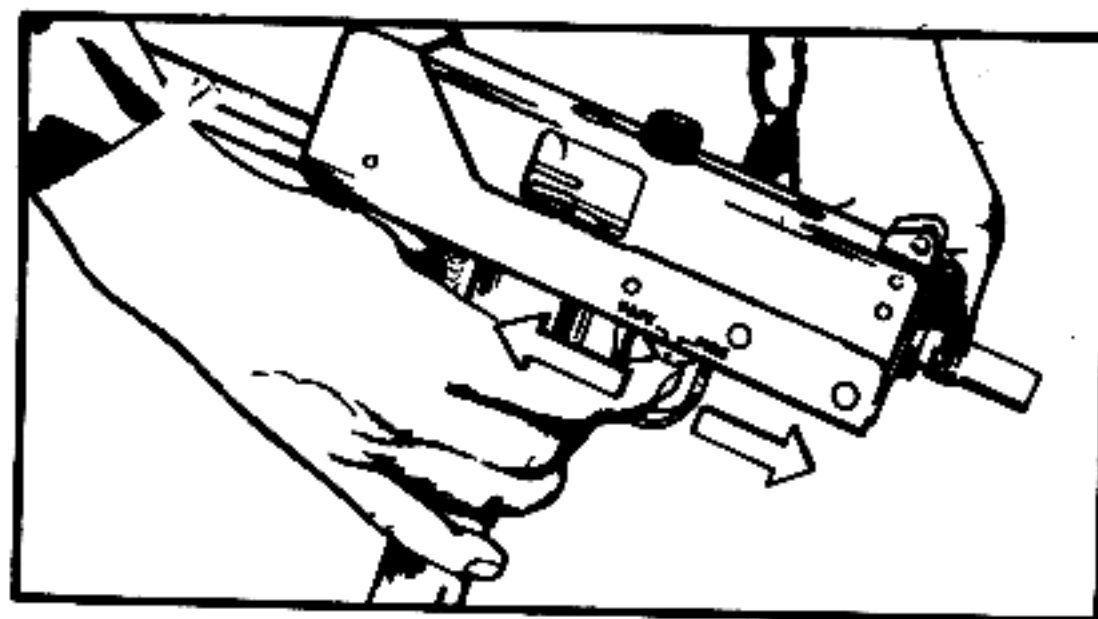


FIG. 7

G. Removal of Magazine

Grasp magazine in left hand and with left thumb press magazine catch to release magazine. (See Fig. 8)

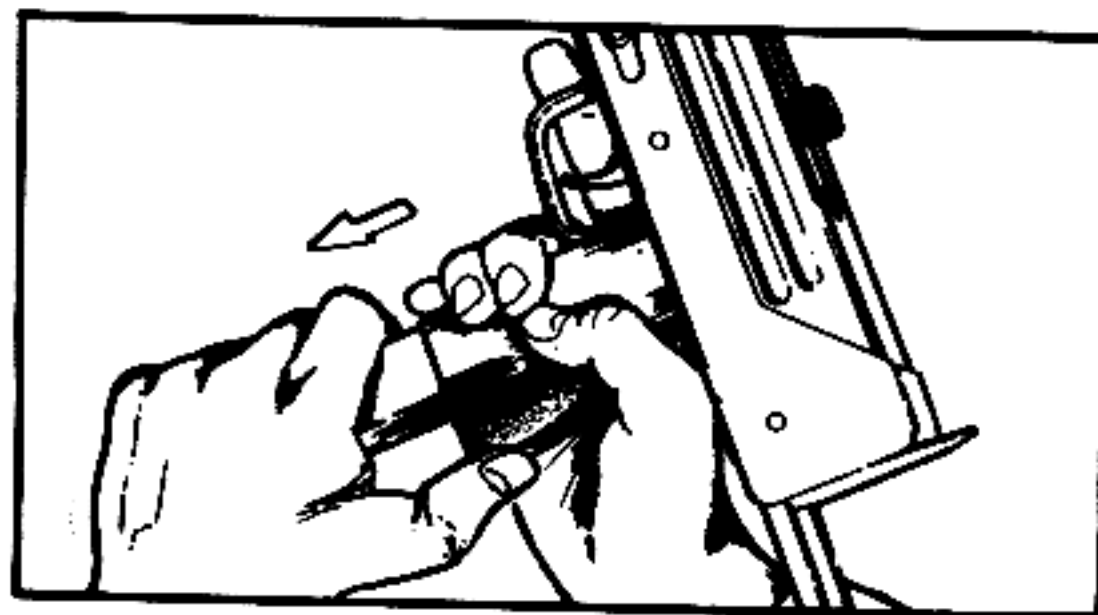


FIG. 8

H. Fire Selector Lever Operation

Located on the left side of the frame the selector is rotated to select 'semi' automatic or 'full' automatic fire. (See Fig. 9)

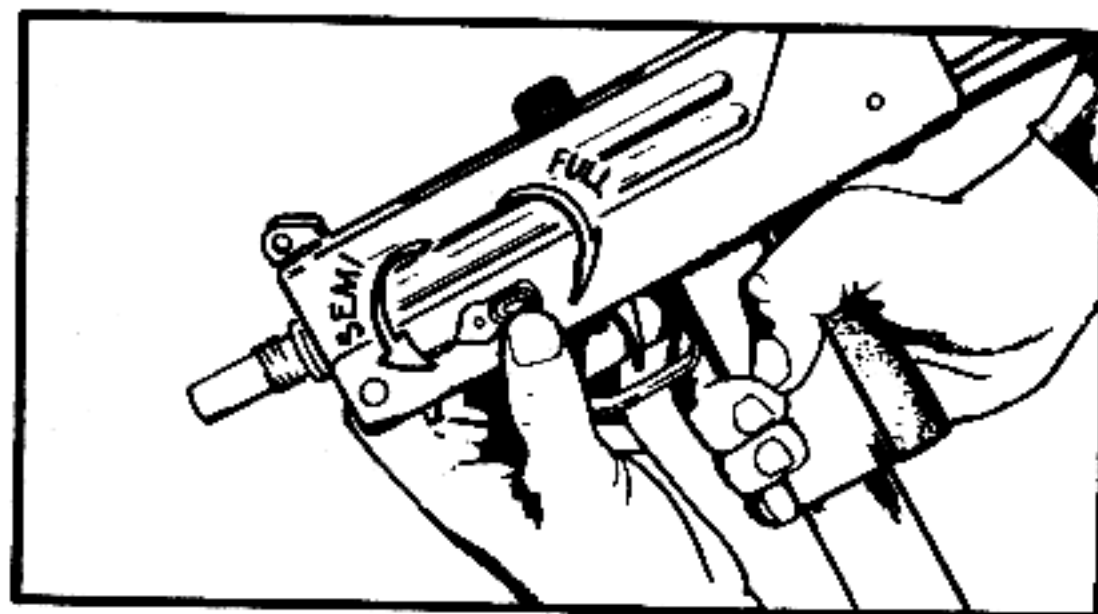


FIG. 9

1. Firing the Submachine Gun

As the bolt is moved back to the cocked position, the recoil spring is compressed and the sear engages the sear notch of the bolt. When the trigger is pressed, the sear releases the bolt, which is driven forward by the recoil spring. During this forward movement, the bolt strips a cartridge from the magazine into the chamber. The bolt continues forward and fires the cartridge. When the cartridge is fired, the chamber pressure forces the bullet out of the muzzle of the barrel. At the same time, this pressure overcomes the forward movement of the bolt and starts it to the rear. By the time the bolt and empty case have moved to the rear far enough to open the rear of the chamber, the bullet has left the barrel, and the chamber pressure has diminished. (In the submachine gun, the chamber pressure is relatively low and the bolt is relatively heavy; this eliminates the need for positive locking and unlocking.) During the rearward movement of the bolt, the empty cartridge case is extracted and ejected, the recoil spring is compressed and the top round in the magazine moves up against the lips of the magazine. The rearward movement of the bolt is stopped by contact with the buffer plate.

J. Malfunctions

Malfunctions are usually the result of worn parts or improper care of the gun. A knowledge of how the gun functions enables the user to classify and correct the malfunction. Listed below are the types of malfunctions which might occur.

1. Failure to Feed. The top cartridge in the magazine is not positioned up and in front of the bolt. Most malfunctions of the submachine gun are failures to feed caused by a defective or dirty magazine.
2. Failure to Chamber. The top cartridge from the magazine is not seated in the chamber.
3. Failure to Fire. The cartridge is chambered but does not fire.
4. Failure to Extract. If the cartridge fires, the chamber pressure will normally push the empty cartridge case out of the chamber. If the cartridge case is not completely removed from the chamber and the bolt is retracted, then there is a failure to extract. This malfunction seldom occurs.
5. Failure to Eject. The empty cartridge case is not ejected from the weapon.
6. Failure to Cock. If the bolt is retracted and is not held by the sear, or if, during firing, the bolt does not move to the rear far enough to clear the top cartridge in the magazine, the gun fails to cock.

Common Malfunctions. The three most common malfunctions are:

1. Failure to feed - usually caused by a defective magazine.
2. Failure to fire - usually caused by defective ammunition.
3. Failure to cock - usually caused by low-powered ammunition.

Causes of Malfunctions. The following chart lists common causes of various malfunctions and corrective action.

| Mal-function | Cause | Corrective Action |
|--------------------|--------------------------------|------------------------|
| Failure to feed. | Dirty or dented magazine | Replace magazine |
| | Weak or broken magazine spring | Replace magazine |
| | Worn magazine notch | Replace magazine |
| | Corroded ammunition | Replace ammunition |
| | Worn or broken magazine catch | Replace magazine catch |
| Failure to chamber | Dirty chamber | Clean chamber |
| | Obstruction in chamber | Remove obstruction |
| | Weak recoil spring | Replace recoil spring |
| Failure to fire | Defective ammunition | Replace ammunition |
| | Defective firing pin | Replace bolt |
| | Weak recoil spring | Replace recoil spring |
| Failure to extract | Broken extractor | Replace extractor |
| Failure to eject | Broken ejector | Replace ejector |
| | Broken or missing extractor | Replace extractor |
| Failure to cock | Worn sear | Replace sear |
| | Worn sear notch | Replace bolt |
| | Bent guide rods | Straighten |
| | Low powered ammunition | Replace ammunition |

Prevention of Malfunctions. Periodic inspection and proper care and cleaning will reduce the possibility of the sub-machine gun malfunctioning.

4. STRIPPING AND REASSEMBLING

The Model 10 and Model 11 have been designed so that no special tools are necessary in order to strip or reassemble the weapon.

Stripping

Before starting to strip the weapon remove the magazine and check the barrel chamber by looking through the EJECTION PORT to make sure there is no live round in the weapon.

A. Field Stripping consists of

1) Removing Upper Receiver (Cock Weapon)

Push receiver pin catch back and remove receiver pin. (See Fig. 10)

Lift upper receiver from frame. (See Fig. 11)

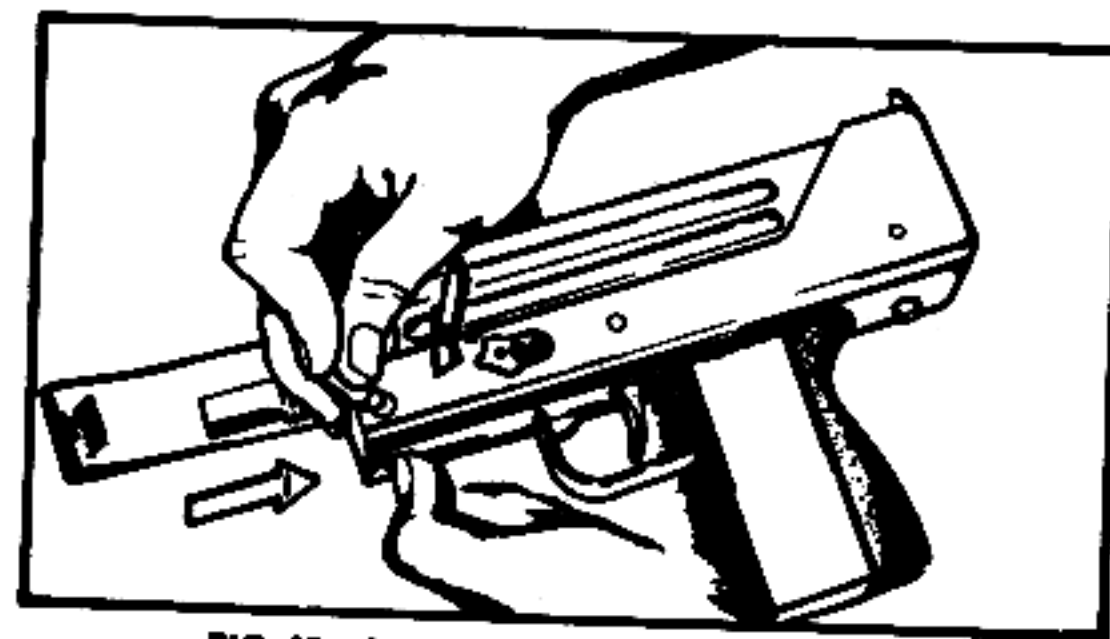


FIG. 10 Removing Pin Securing Receiver Group

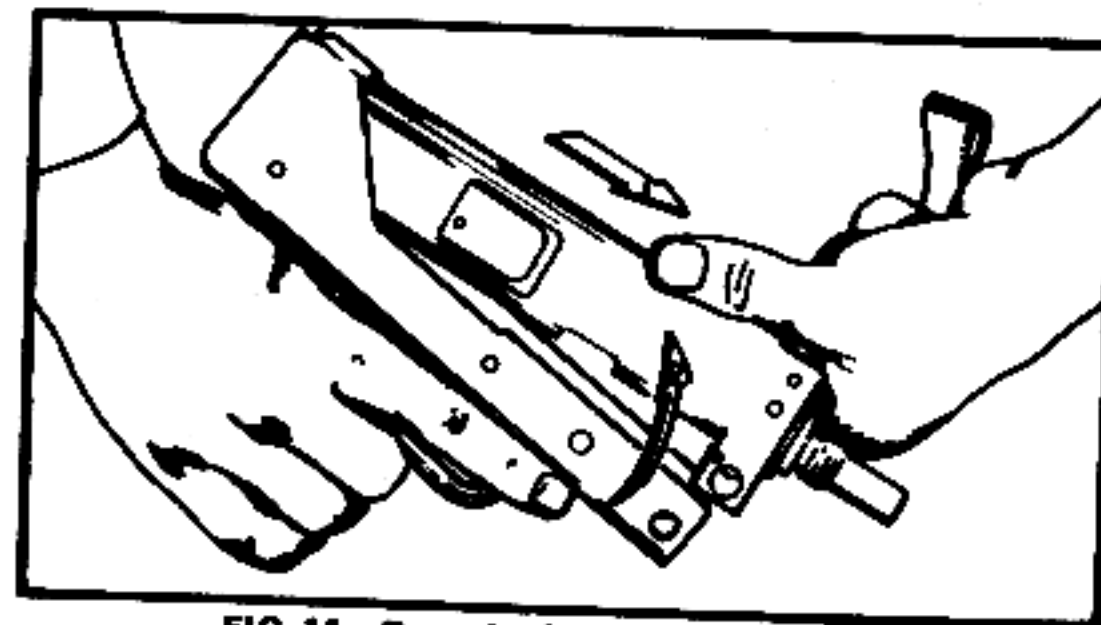


FIG. 11 Removing Barrel and Receiver Group

- 2) **Removing the Bolt**
Slide cocking handle to rear of guide slot, rotate handle a few degrees and pull from bolt. (See Fig. 12) The bolt and recoil spring assembly can now be removed from the rear of the receiver. (See Fig. 13)

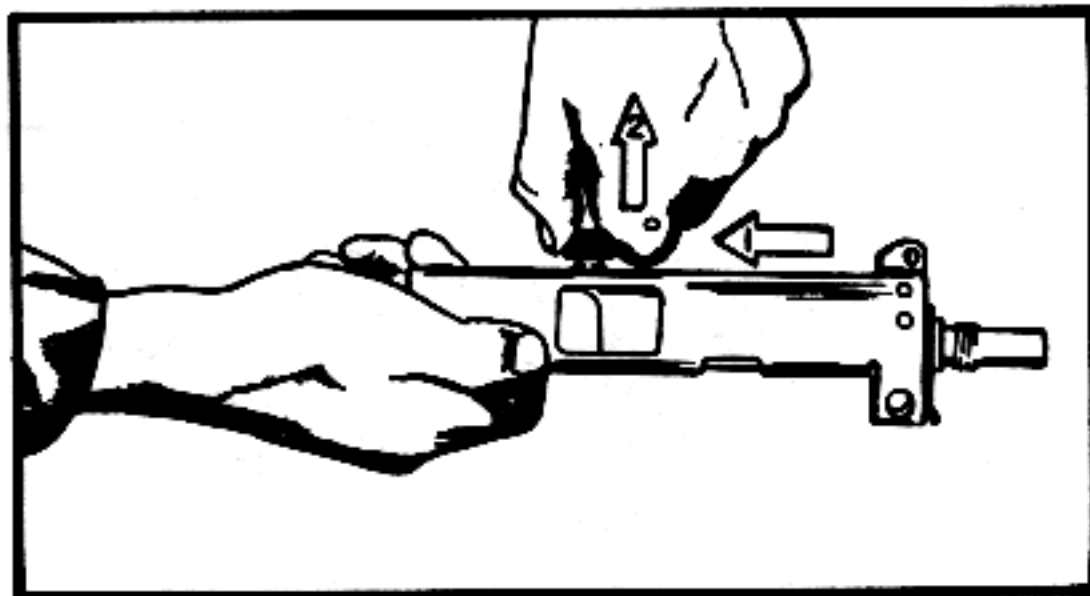


FIG. 12 Removing Cocking Handle

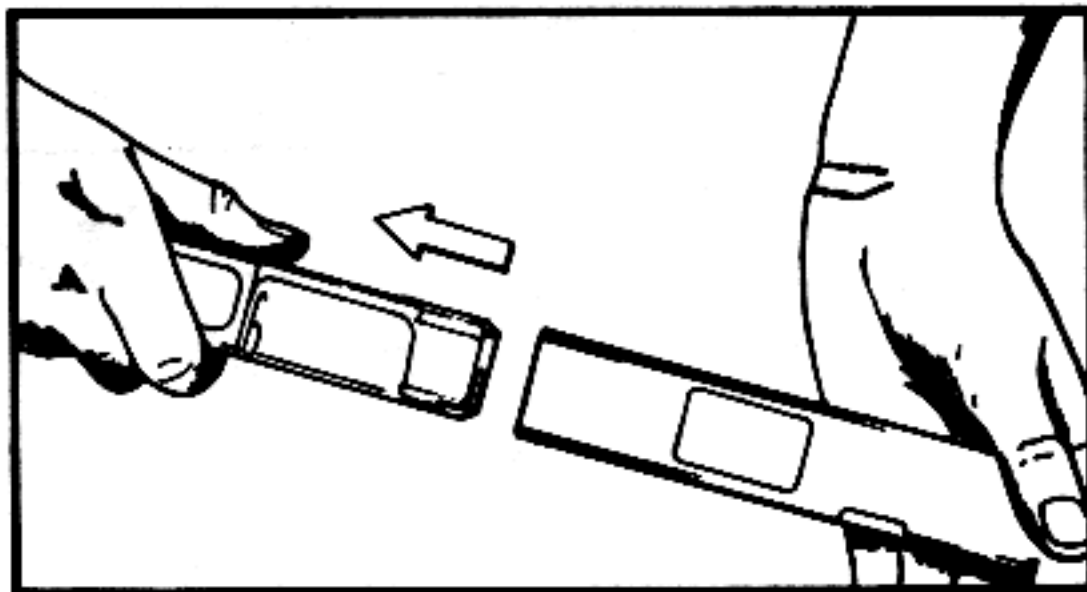


FIG. 13 Bolt Removed from Rear of Receiver

3) **Removing the Stock**

To remove stock, depress stock latch button and keeping pressure on button pull stock completely out. (See Figs. 3 and 4)

The procedure mentioned above is generally sufficient for normal maintenance and cleaning. If necessary to clean trigger mechanism, removal is as follows:

B. **Trigger Mechanism**

Lift retainer and remove selector lever, this also allows removal of sear, sear spring and tripping lever. Push trigger pin out of the left side for removal of trigger or torsion spring. Note: for reassembly, free arm of torsion spring is located on rear side of disconnecter. Disconnecter may be replaced by using a pin punch to remove spring pin.

C. **Extractor**

Use pin punch to remove extractor spring pin.

D. **Recoil Spring**

Compress spring and move guide rod clear of bolt and use pin punch to remove spring pin from guide rod.

E. **Receiver Pin Catch**

Use pin punch to remove spring pin.

F. **Magazine Catch**

Use flat bladed screw-driver to remove screw in hand grip for access to catch.

G. **Safety Catch**

Use pin punch to remove catch spring pin.

H. **Stock Latch**

Press down lightly at center of pin and slide to either side to remove retaining pin. Invert frame and latch will drop out.

I. **Magazine**

M10/9MM Para, M11 .380 ACP

Depress stud in floor plate and slide plate from the magazine body, keeping finger over the bottom of the magazine to prevent magazine spring from flying out. Remove the magazine spring and the magazine follower.

M10/45 ACP

Lift the tab in the floor plate by inserting a screw-driver in the hole. Remove base plate, placing the finger over the bottom of the magazine to prevent the magazine spring from flying out. Remove the magazine spring and the magazine follower.

NOTE: To achieve the proper functioning when reassembling the M11 and M10/45 magazine ensure that the slope of the top coil of the spring corresponds with the slope on the follower.

5. REASSEMBLY

Items are reassembled in the reverse order to the stripping procedure.

6. Cleaning and Maintenance

It is essential for reliable operation and performance that the weapon receive careful maintenance. It should be cleaned at the end of each day's firing.

The Gun need only be "field stripped" for this maintenance.

Barrel and Receiver Group Cleaning

- A. Use cleaning rod, patch and solvent. Stubborn residue can be removed with a bristle bore brush.
- B. Swab bore with patch saturated in solvent.
- C. Use solvent saturated patch and swab inside of receiver to remove residue.
- D. Use clean dry patch to dry barrel and inside of receiver group.
- E. Dampen patch with light oil and swab barrel and receiver.

Bolt Assembly Cleaning

- A. Remove powder residue with solvent and patch.
- B. Wipe all surfaces of bolt to remove carbon. The bolt face should be completely free of carbon and other residue.
- C. Wipe dry and apply a light coat of oil.

Frame Assembly Group Cleaning

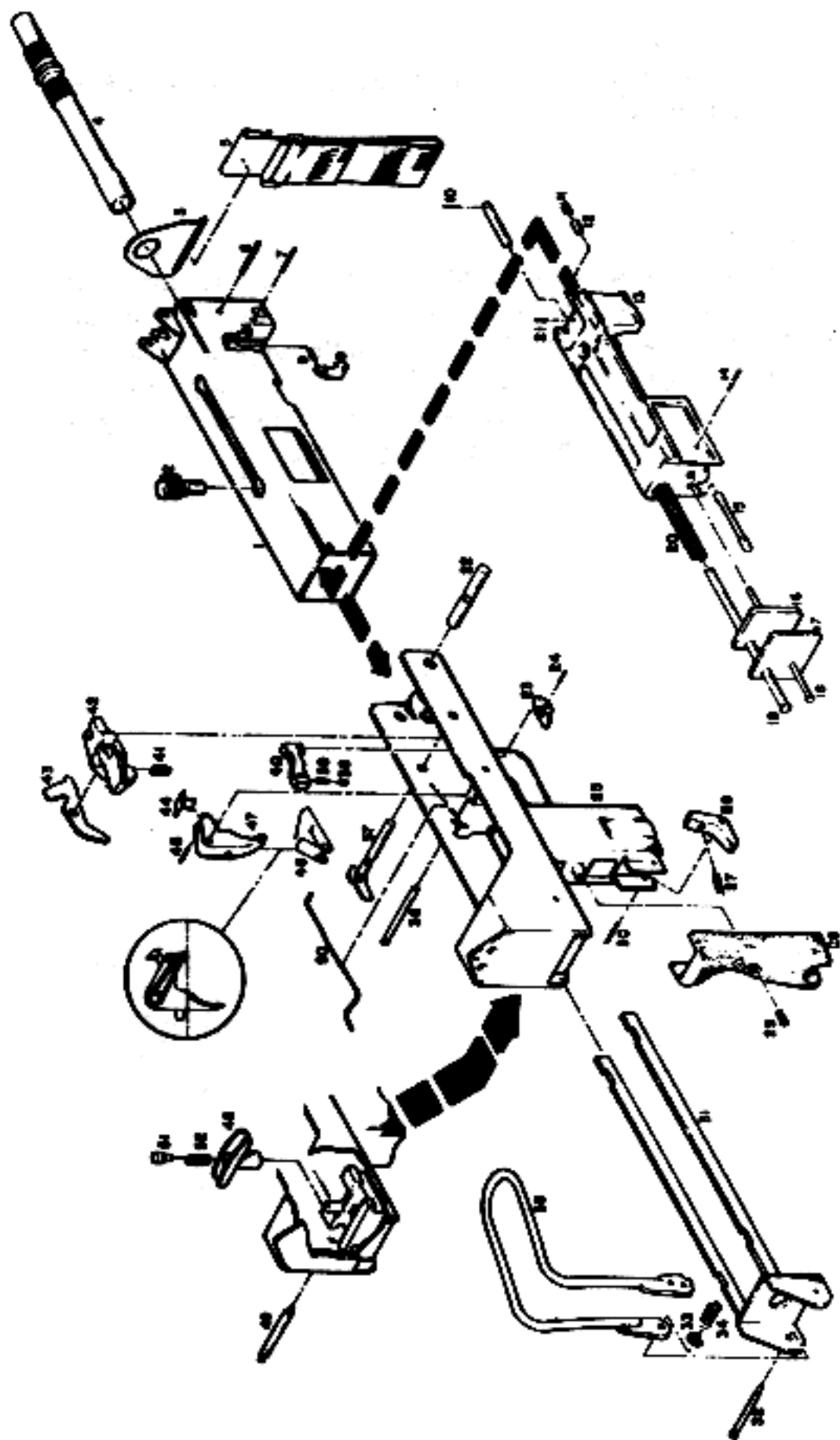
- A. Remove residue build-up on exposed surfaces with solvent-soaked cloth.
- B. Clean around the lockwork. The weapon is designed to tolerate some dirt in the frame group but excessive dirt will impair operation. Detail cleaning is required after prolonged operation or improper functioning of weapon.
- C. Wipe dry and use oily patch to coat exposed metal areas with light film of oil.

Magazine Cleaning

- A. Inspect magazine for damaged areas. Damaged magazines should be discarded.
- B. Clean lip area and top of the follower.
- C. Wipe with oily patch.

Suppressor Cleaning

The suppressor requires no maintenance other than ensuring that the bore is kept clear of obstructions and periodic cleaning with bore brush. Inspection must be made with the suppressor removed from the weapon. The front end cap of the suppressor is replaceable. It should be replaced after each 500 rounds of firing or sooner if the noise level has increased significantly.



MAC M10-45 ACP

M10/45 SUBMACHINE GUN ILLUSTRATED PARTS LIST

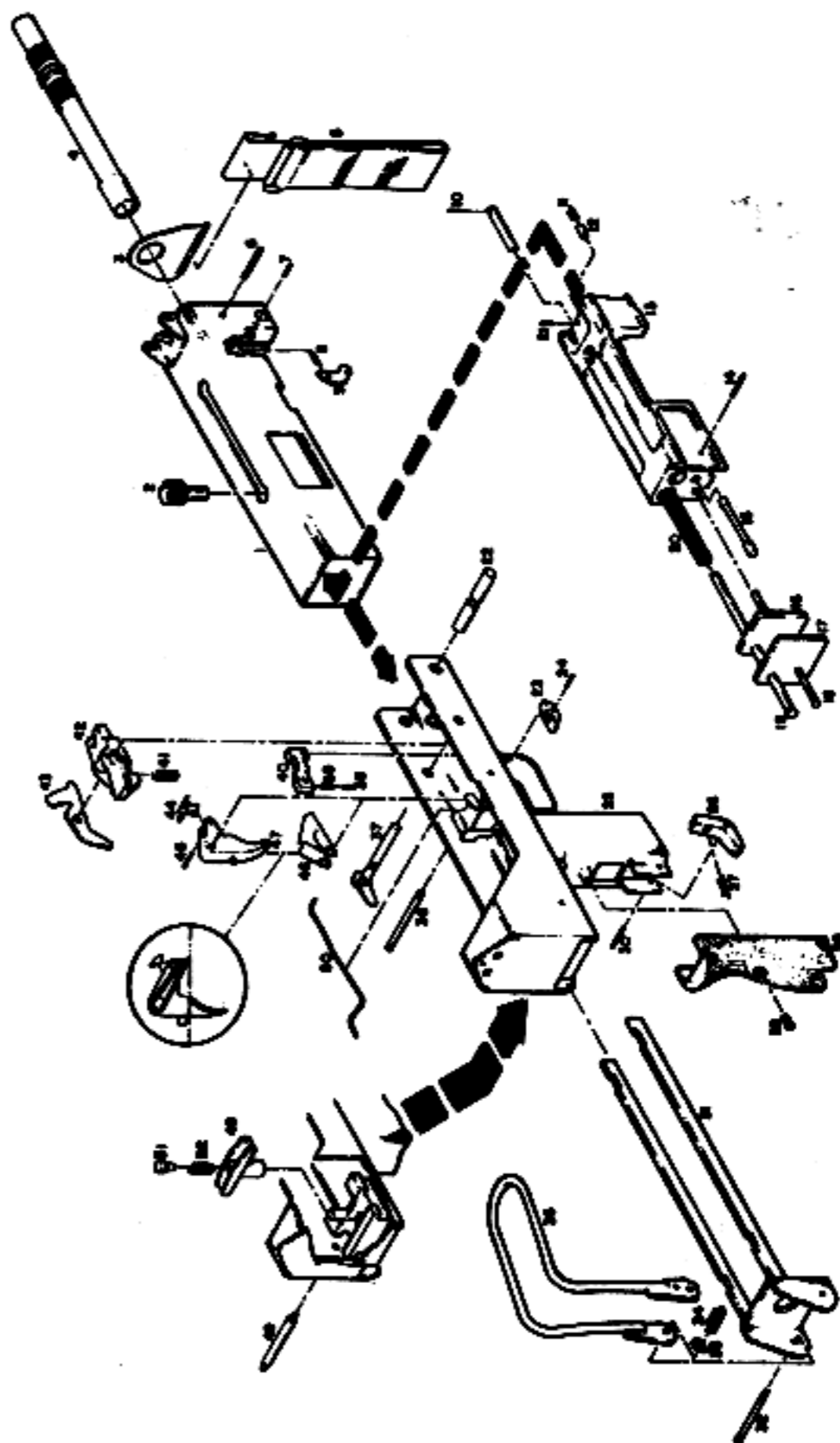
| ITEM | TITLE | PART NO. |
|------|--|-----------|
| 1. | Receiver | 150309 |
| 2. | Bolt Handle | 150012 |
| 3. | Hanger | 150395 |
| 4. | Barrel | 150063 |
| 5. | Strap Assembly | 150394 |
| 6. | Spring Pin, Barrel | 150032-4 |
| 7. | Spring Pin, Receiver Pin Catch | 150032-6 |
| 8. | Compression Spring, Receiver Pin Catch | 150025-11 |
| 9. | Pin Catch | 150039 |
| 10. | Spring Pin, Recoil Spring Rod | 150032-5 |
| 11. | Compression Spring, Bolt Handle Detent | 150611 |
| 12. | Bolt Handle Detent | 150037 |
| 13. | Bolt | 150073 |
| 14. | Spring Pin, Extractor | 150032-6 |
| 15. | Extractor | 150021 |
| 16. | Buffer | 150047 |
| 17. | Plate | 150024 |
| 18. | Ejector | 150023 |
| 19. | Guide Rod | 150022 |
| 20. | Compression Spring, Recoil | 150616 |
| 21. | Spring Pin, Bolt Handle Detent | 150032-2 |
| 22. | Receiver Pin | 150038 |
| 23. | Button | 150169 |
| 24. | Spring Pin, Safety | 150032-9 |
| 25. | Frame Assembly | 150081 |
| 26. | Magazine Catch | 150465 |
| 27. | Compression Spring, Magazine Catch | 150598 |
| 28. | Grip | 150068 |
| 29. | Grip Screw | 150043 |
| 30. | Magazine Catch Pin | 150041 |
| 31. | Stock Rail | 150088 |
| 32. | Stock Hinge Pin | 150462 |
| 33. | Retaining Ring | 150460 |

M10/45MM (cont'd)

| ITEM | TITLE | PART NO. |
|------|-----------------------------------|----------|
| 34. | Compression Spring, Stock Hinge | 150612 |
| 35. | Wire Form Butt | 150155 |
| 36. | Trigger Pin | 150016 |
| 37. | Sear Pin | 150252 |
| 38. | Safety Detent Plunger | 150293 |
| 39. | Compression Spring, Safety Detent | 150597 |
| 40. | Safety Slide | 150168 |
| 41. | Compression Spring, Sear | 150594 |
| 42. | Sear | 150070 |
| 43. | Trip | 150268 |
| 44. | Disconnecter | 150249 |
| 45. | Spring Pin, Disconnecter | 150032-5 |
| 46. | Torsion Spring, Trigger | 150539 |
| 47. | Trigger | 150448 |
| 48. | Latch | 150091 |
| 49. | Stock, Latch Pin | 150094 |
| 50. | Retainer | 150269 |
| 51. | Plunger, Stock Latch | 150110-1 |
| 52. | Compression Spring, Stock Latch | 150598 |

ACCESSORIES: (Not Included)

| | |
|-----------------|--------|
| Magazine | 150111 |
| Magazine Pouch | 150072 |
| Magazine Loader | 150245 |
| Cleaning Rod | 150209 |
| Sling | 150459 |
| Suppressor | 150216 |

**MAC M10-9mm**

**M10/9MM SUBMACHINE GUN
ILLUSTRATED PARTS LIST**

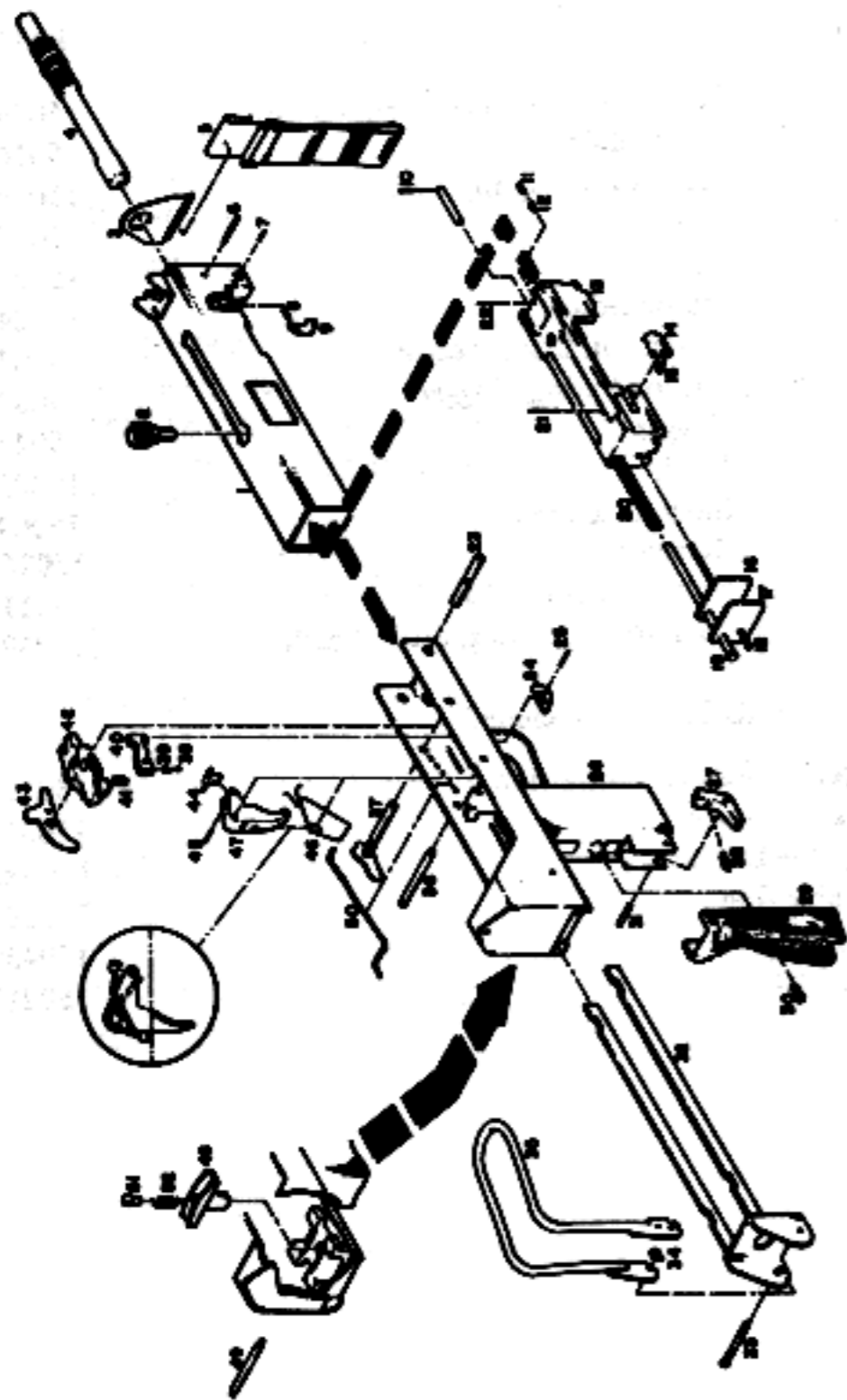
| ITEM | TITLE | PART NO. |
|------|--|-----------|
| 1. | Receiver | 150309 |
| 2. | Bolt Handle | 150012 |
| 3. | Hanger | 150395 |
| 4. | Barrel | 150005 |
| 5. | Strap Assembly | 150394 |
| 6. | Spring Pin, Barrel | 150032-4 |
| 7. | Spring Pin, Receiver Pin Catch | 150032-6 |
| 8. | Compression Spring, Receiver Pin Catch | 150025-11 |
| 9. | Pin Catch | 150039 |
| 10. | Spring Pin, Recoil Spring Rod | 150032-5 |
| 11. | Compression Spring, Bolt Handle Detent | 150611 |
| 12. | Bolt Handle Detent | 150037 |
| 13. | Bolt | 150004 |
| 14. | Spring Pin, Extractor | 150032-6 |
| 15. | Extractor | 150294 |
| 16. | Buffer | 150047 |
| 17. | Plate | 150024 |
| 18. | Ejector | 150023 |
| 19. | Guide Rod | 150022 |
| 20. | Compression Spring, Recoil | 150580 |
| 21. | Spring Pin, Bolt Handle Detent | 150032-5 |
| 22. | Receiver Pin | 150038 |
| 23. | Button | 150169 |
| 24. | Spring Pin, Safety | 150032-9 |
| 25. | Frame Assembly | 150010 |
| 26. | Magazine Catch | 150077 |
| 27. | Compression Spring, Magazine Catch | 150598 |
| 28. | Grip | 150068 |
| 29. | Grip Screw | 150043 |
| 30. | Magazine Catch Pin | 150041 |
| 31. | Stock Rail | 150088 |
| 32. | Stock Hinge Pin | 150462 |
| 33. | Retaining Ring | 150460 |
| 34. | Compression Spring, Stock Hinge | 150612 |
| 35. | Wire Form Butt | 150155 |
| 36. | Trigger Pin | 150016 |
| 37. | Sear Pin | 150252 |
| 38. | Safety Detent Plunger | 150293 |

M10/9MM (Cont'd)

| ITEM | TITLE | PART NO. |
|------|-----------------------------------|----------|
| 39. | Compression Spring, Safety Detent | 150597 |
| 40. | Safety Slide | 150168 |
| 41. | Compression Spring, Sear | 150594 |
| 42. | Sear | 150070 |
| 43. | Trip | 150268 |
| 44. | Disconnecter | 150249 |
| 45. | Spring Pin, Disconnecter | 150032-5 |
| 46. | Torsion Spring, Trigger | 150539 |
| 47. | Trigger | 150448 |
| 48. | Latch | 150091 |
| 49. | Stock Latch Pin | 150094 |
| 50. | Retainer | 150269 |
| 51. | Plunger, Stock Latch | 150110-1 |
| 52. | Compression Spring, Stock Latch | 150598 |

ACCESSORIES: (Not Included)

| | |
|------------------------------|-----------|
| Magazine, Walther Conversion | 150115 |
| Magazine Pouch | 150072 |
| Magazine Loader | No Req'd. |
| Cleaning Rod | 150209 |
| Sling | 150459 |
| Suppressor | 150217 |



MAC M11-380 ACP

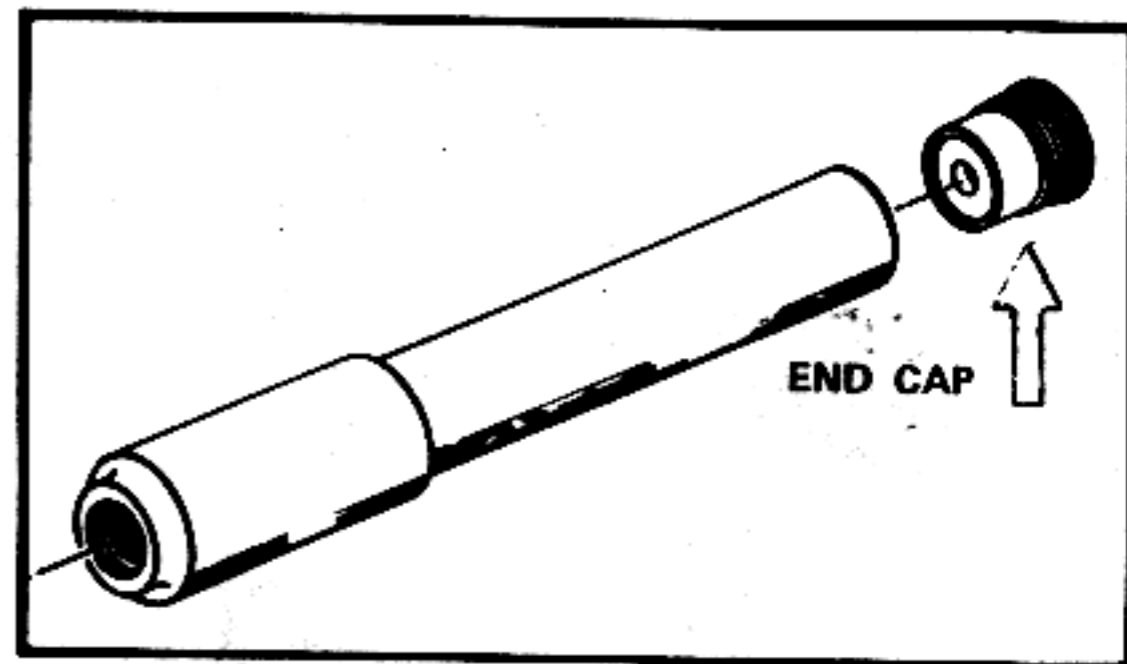
**M11 .380 SUBMACHINE GUN
ILLUSTRATED PARTS LIST**

| ITEM | TITLE | PART NO. |
|------|--|----------|
| 1. | Receiver | 150308 |
| 2. | Bolt Handle | 150121 |
| 3. | Hanger | 150396 |
| 4. | Barrel | 150172 |
| 5. | Strap Assembly | 150393 |
| 6. | Spring Pin, Barrel | 150032-7 |
| 7. | Spring Pin, Receiver Pin Catch | 150032-6 |
| 8. | Compression Spring, Receiver Pin Catch | 150025-8 |
| 9. | Pin Catch | 150133 |
| 10. | Spring Pin, Recoil Spring Rod | 150032-3 |
| 11. | Compression Spring, Bolt Handle Detent | 150618 |
| 12. | Bolt Handle Detent | 150146 |
| 13. | Bolt | 150120 |
| 14. | Extractor | 150129 |
| 15. | Compression Spring, Extractor | 150614 |
| 16. | Buffer | 150055 |
| 17. | Plate | 150148 |
| 18. | Ejector | 150176 |
| 19. | Guide Rod | 150175 |
| 20. | Compression Spring, Recoil | 150617 |
| 21. | Spring Pin, Extractor | 150032-6 |
| 22. | Spring Pin, Bolt Handle Detent | 150032-1 |
| 23. | Receiver Pin | 150177 |
| 24. | Button | 150169 |
| 25. | Spring Pin Safety | 150032-9 |
| 26. | Frame Assembly | 150173-1 |
| 27. | Magazine Catch | 150077 |

| ITEM | TITLE | PART NO. |
|------|-------------------------------------|----------|
| 28. | Compression Spring — Magazine Catch | 150598 |
| 29. | Grip | 150139 |
| 30. | Grip Screw | 150043 |
| 31. | Magazine Catch Pin | 150041 |
| 32. | Stock Rail | 150162 |
| 33. | Stock Hinge Pin | 150463 |
| 34. | Retaining Ring | 150460 |
| 35. | Wire Form Butt | 150534 |
| 36. | Trigger Pin | 150179 |
| 37. | Sear Pin | 150248 |
| 38. | Safety Detent Plunger | 150293 |
| 39. | Compression Spring, Safety Detent | 150597 |
| 40. | Safety Slide | 150189 |
| 41. | Compression Spring, Sear | 150599 |
| 42. | Sear | 150134 |
| 43. | Trip | 150264 |
| 44. | Disconnecter | 150249 |
| 45. | Spring Pin, Disconnecter | 150032-5 |
| 46. | Torsion Spring, Trigger | 150615 |
| 47. | Trigger | 150135 |
| 48. | Latch | 150145 |
| 49. | Stock Latch Pin | 150180 |
| 50. | Retainer | 150270 |
| 51. | Plunger, Stock Latch | 150110-2 |
| 52. | Compression Spring, Stock Latch | 150598 |

ACCESSORIES: (Not Included)

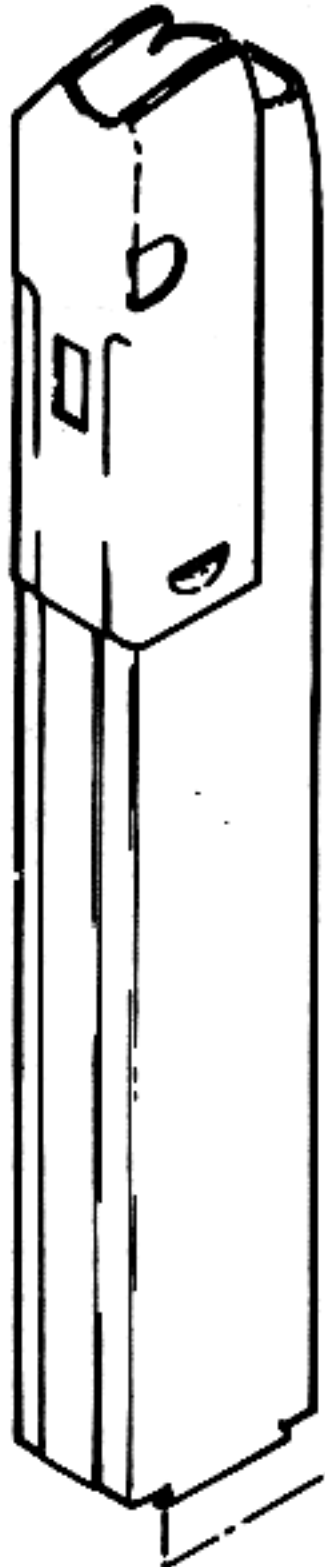
| | |
|-----------------|---------------------------|
| Magazine | 150113-1 (32 rd.) |
| Magazine | 150113-2 (16 rd.) opt. |
| Magazine Pouch | 150072 |
| Magazine Loader | 150197 |
| Cleaning Rod | 150209 |
| Slings | Not Req'd. |
| Suppressor | 150218 |



SUPPRESSOR SHOWING REPLACEABLE END CAP

| | |
|--------------------------|----------|
| Suppressor M-10/9MM | 150217 |
| End Cap | 150225-1 |
| Suppressor M-10/45 ACP | 150216 |
| End Cap | 150225-2 |
| Suppressor M-11/.380 ACP | 150218 |
| End Cap | 150225-1 |

150461 - Body



150098 -
Follower



150100 -
Spring



150099
Floor
Plate



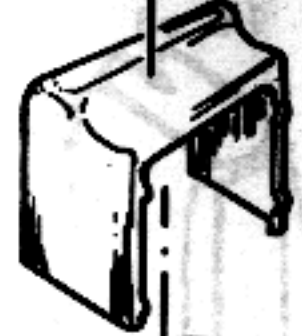
MIO - 45 ACP

27

150237 - Body



150116 -
Follower



150215 -
Spring



150297 -
Floor
Plate
Retainer



150240 -
Floor
Plate



MIO - 9MM

28

150131 -
Body

(-1) 32 rd
(-2) 16 rd



150141 -
Follower

150140 -
Spring

(-1) 32 rd
(-2) 16 rd

150212 (16
rd)

150181 (32
rd)

Floor Plate
Retainer

150144
Floor Plate

M11 - .380